

# The Barrie

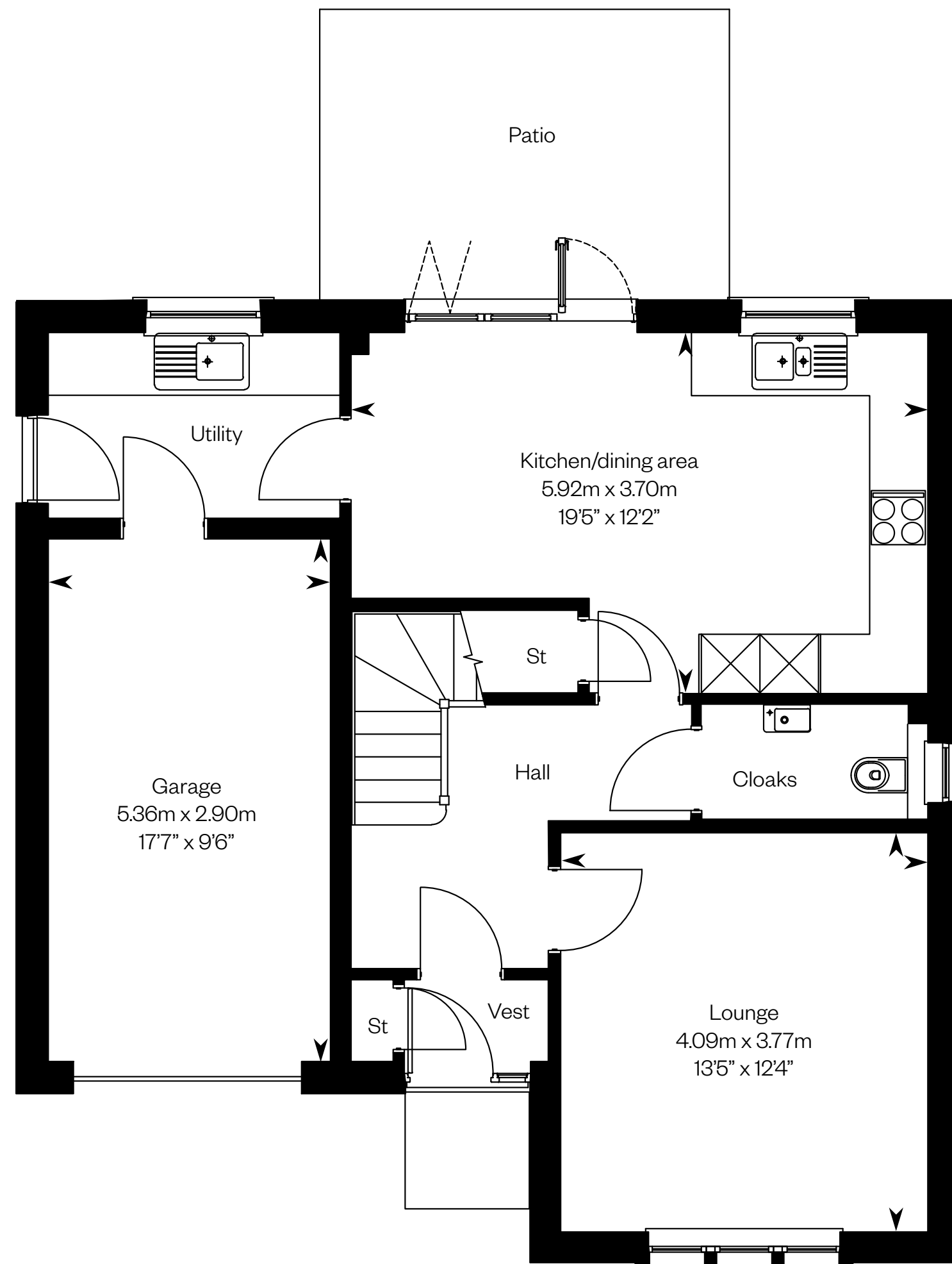
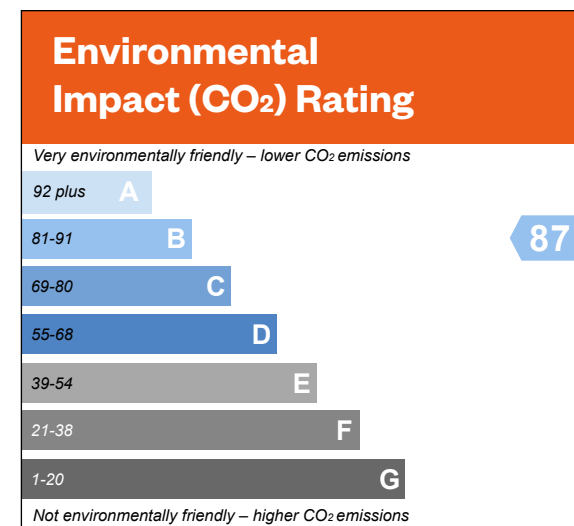
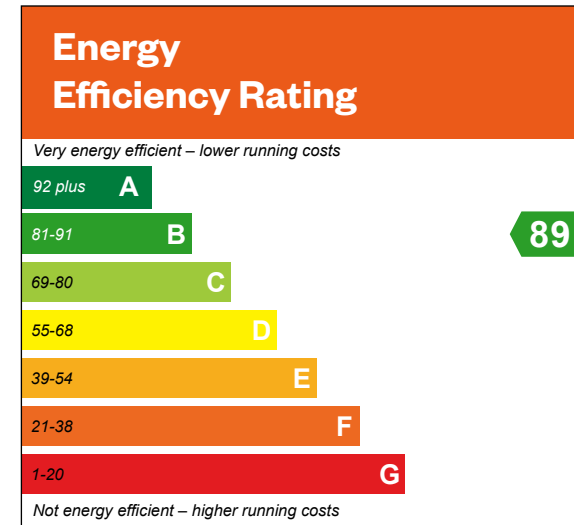
4 bedroom detached home



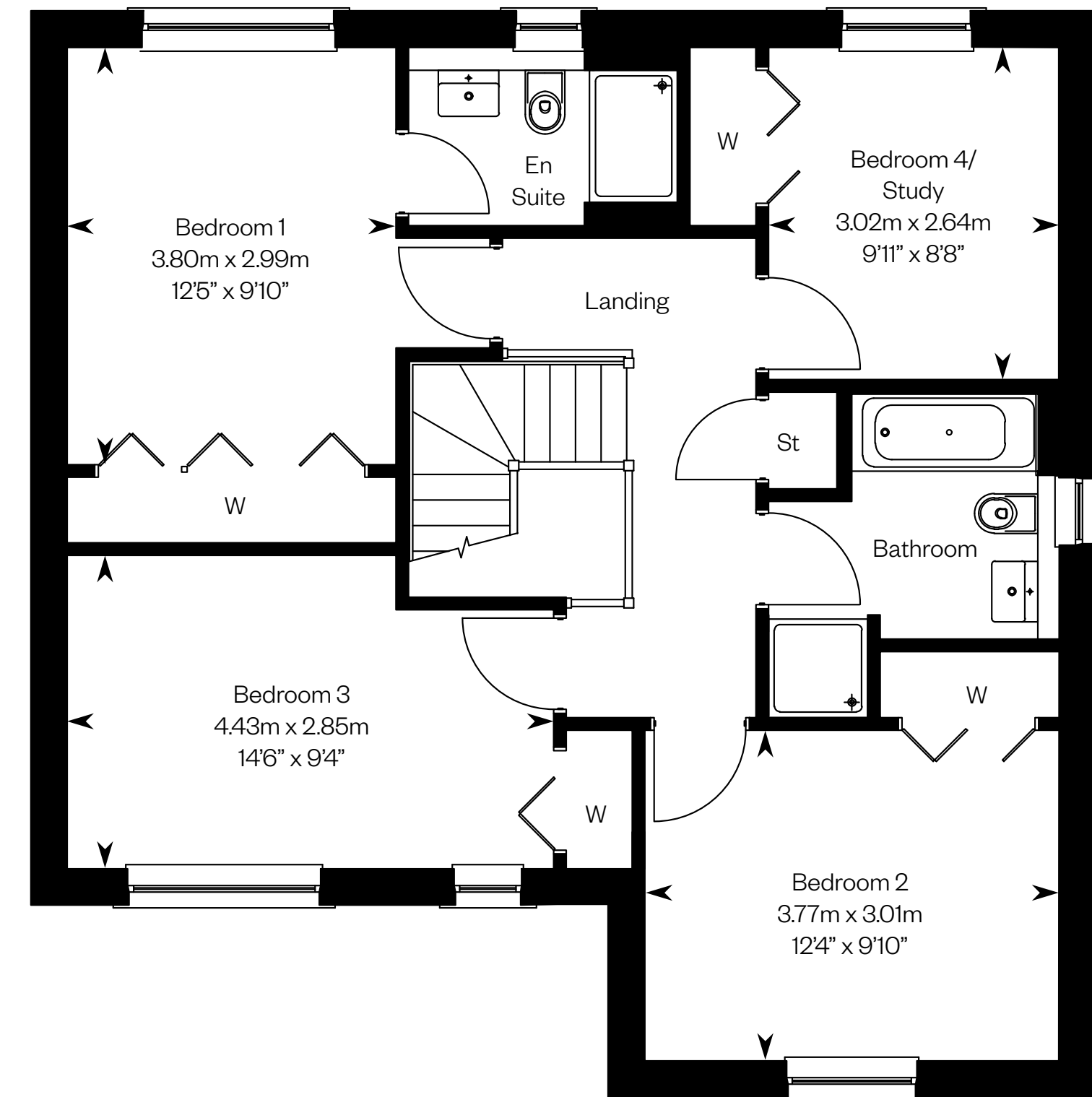
# The Barrie

Plots 112, 120 & 122 – as shown

Plot 107 – handed



Ground floor



First floor

Please ask your Sales Consultant for further details. ST: Store cupboard. W: Wardrobe.

**IMPORTANT NOTICE TO CUSTOMERS:** The Consumer Protection from Unfair Trading Regulations 2008. Cala Homes (East) Limited operates a policy of continual product development and the specifications outlined in this brochure are indicative only. The computer generated images and photographs do not necessarily represent the actual finishings/elevation or treatments, landscaping, furnishings and fittings at this development. Information contained is accurate at date of publication on 26.06.24. See the main brochure for the full Consumer Protection statement.

# The Bryce

4 bedroom detached home





# The Cairn

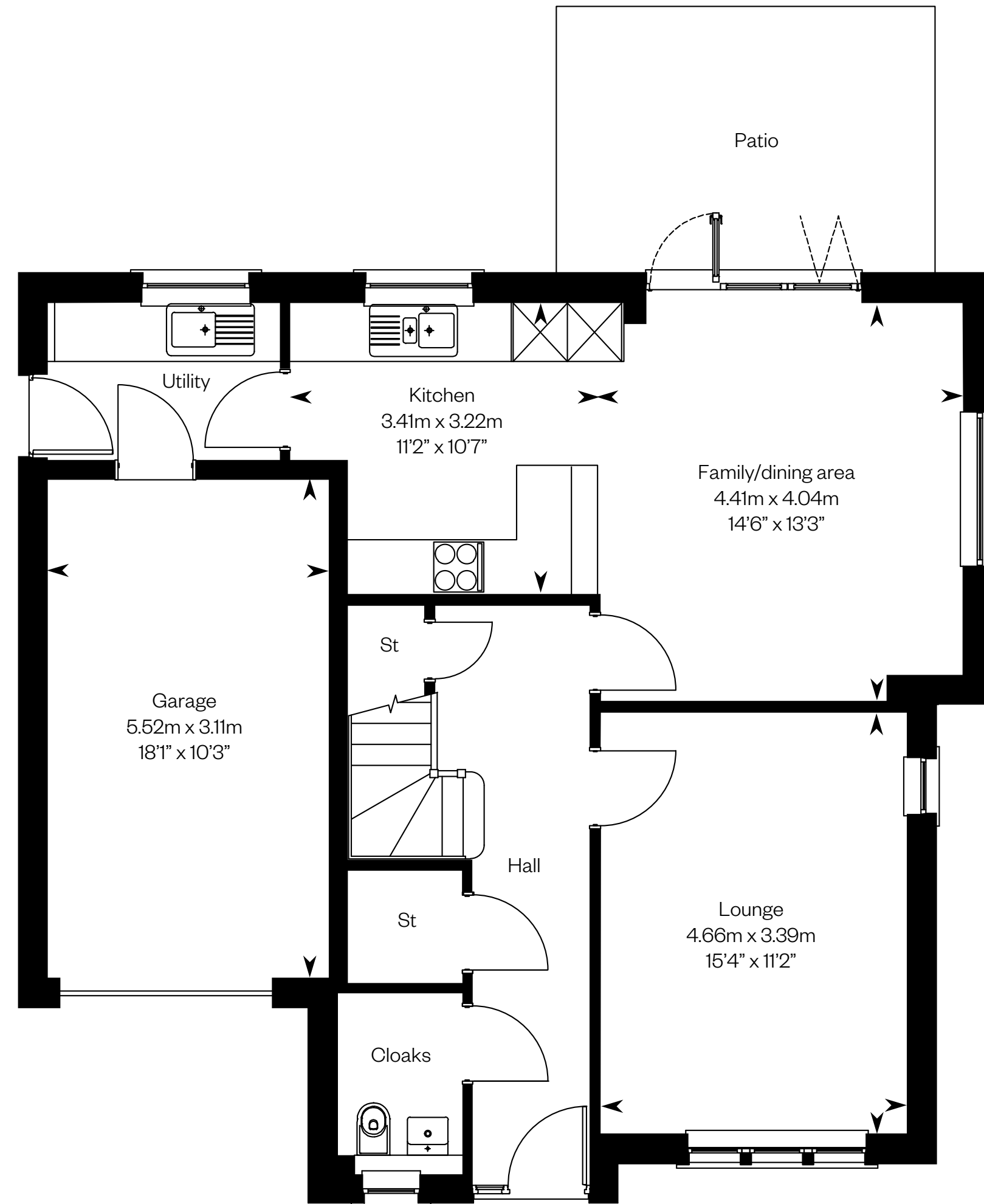
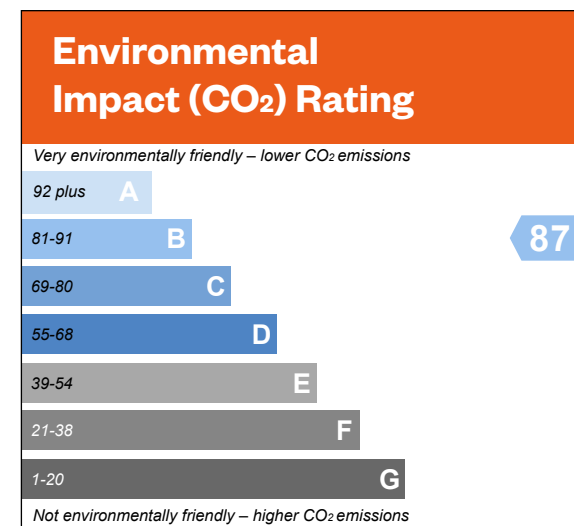
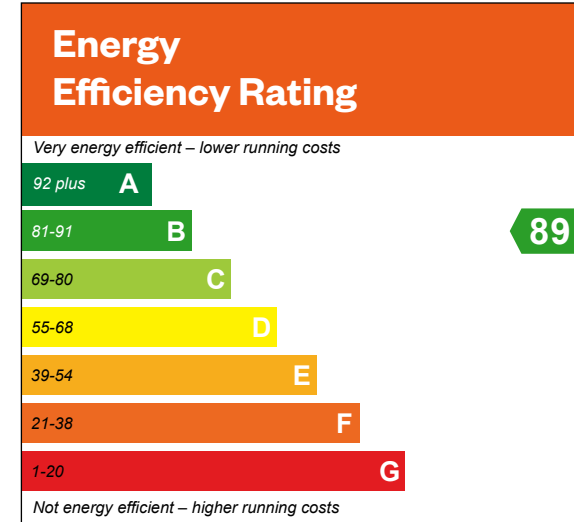
4 bedroom detached home



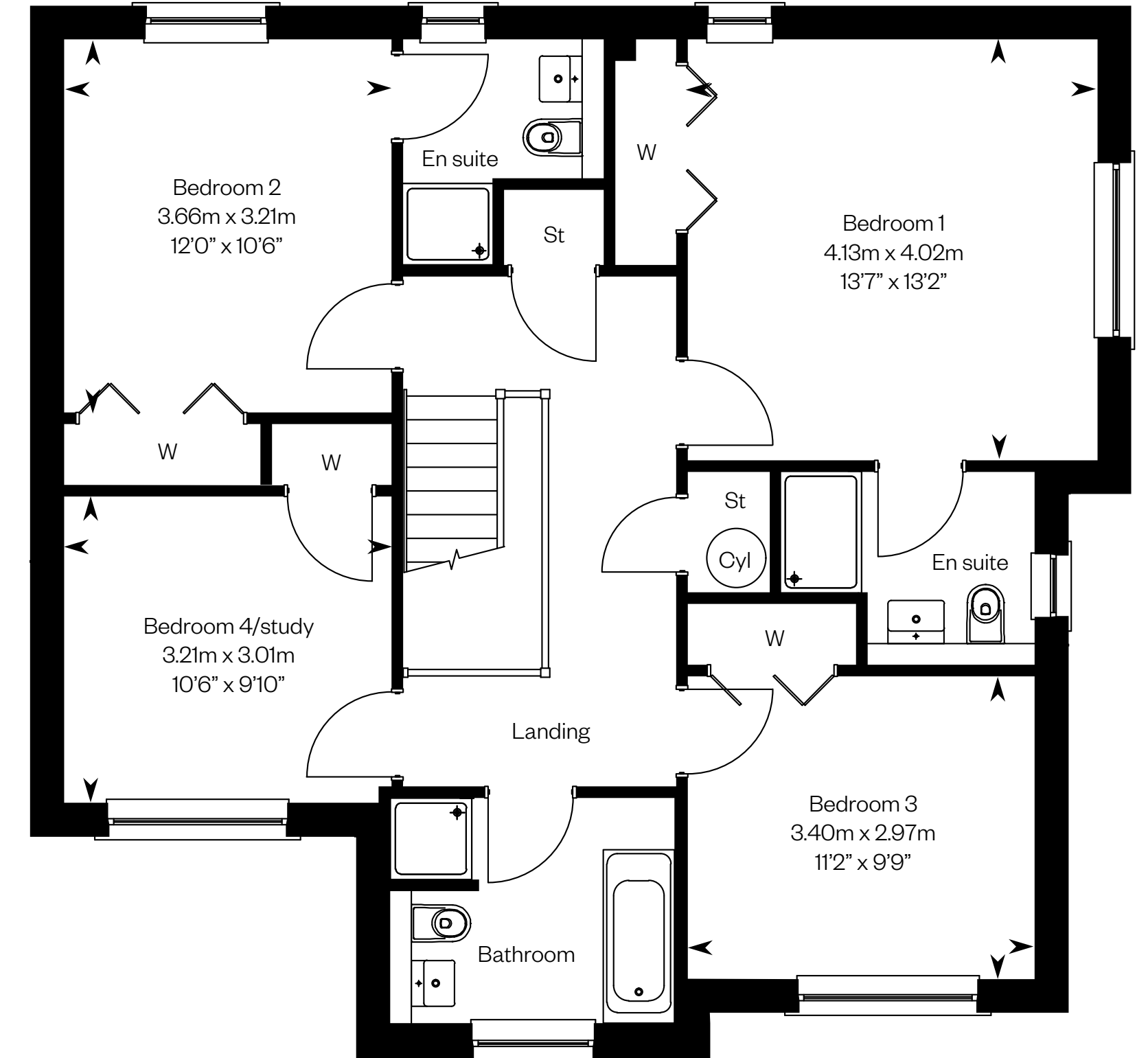
Computer Generated Image - A typical Cairn

# The Cairn

Plot 154 – handed



Ground floor



First floor

Please ask your Sales Consultant for further details. ST: Store cupboard. W: Wardrobe.

IMPORTANT NOTICE TO CUSTOMERS: The Consumer Protection from Unfair Trading Regulations 2008. Cala Homes (East) Limited operates a policy of continual product development and the specifications outlined in this brochure are indicative only. The computer generated images and photographs do not necessarily represent the actual finishings/elevation or treatments, landscaping, furnishings and fittings at this development. Information contained is accurate at date of publication on 26.06.24. See the main brochure for the full Consumer Protection statement.

# The Cleland

4 bedroom detached home







# The Colville

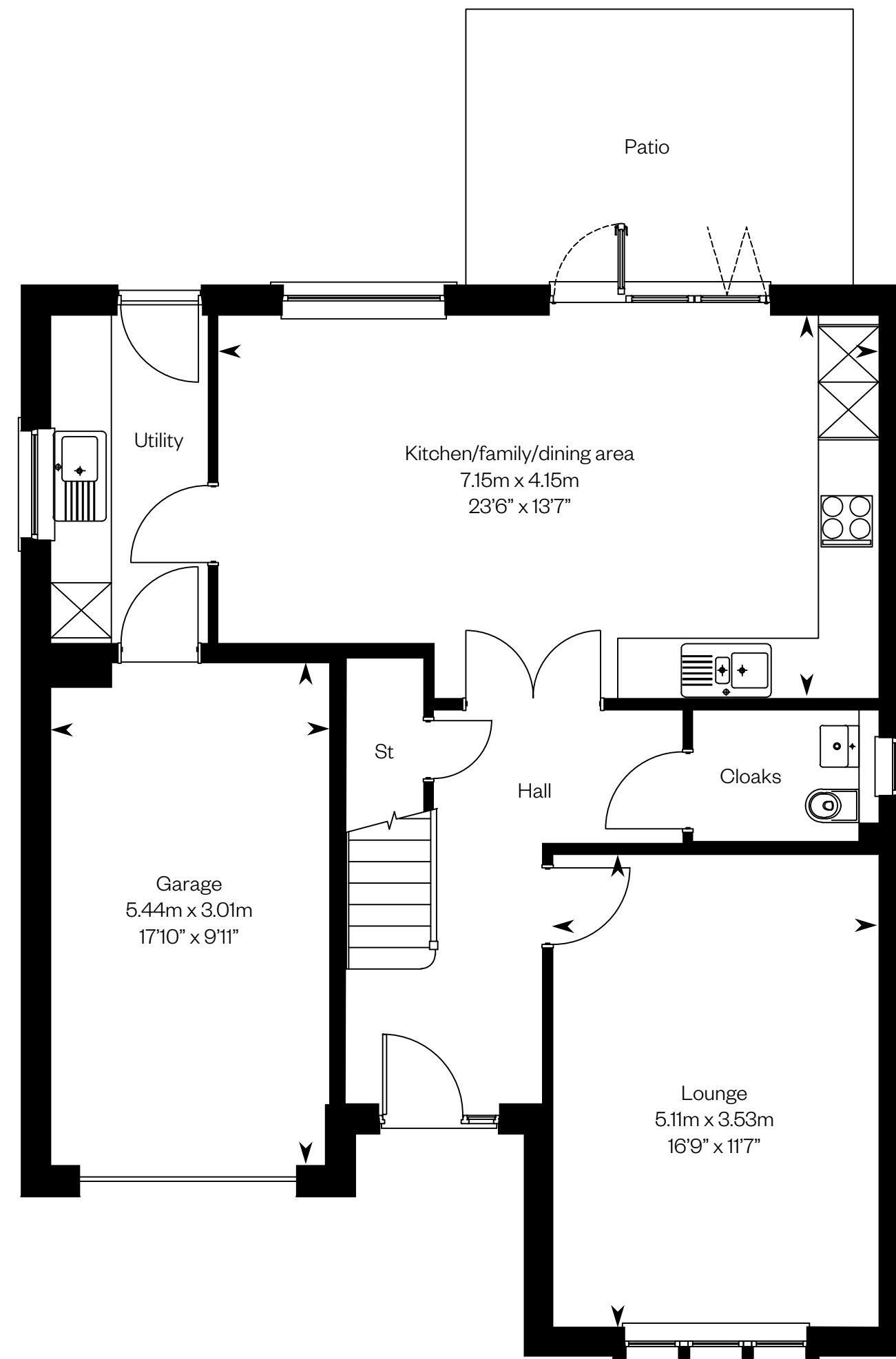
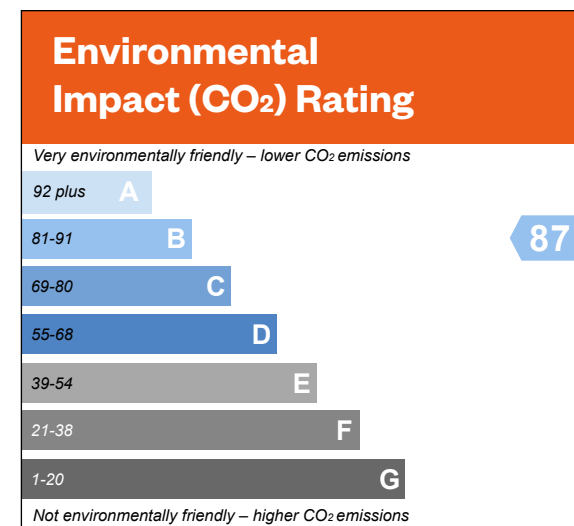
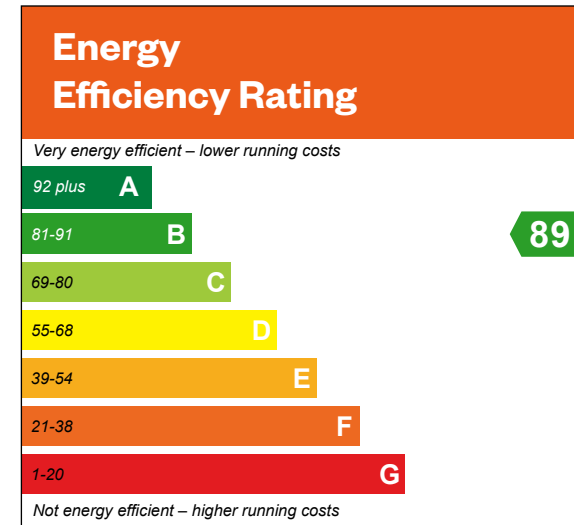
4 bedroom detached home with study



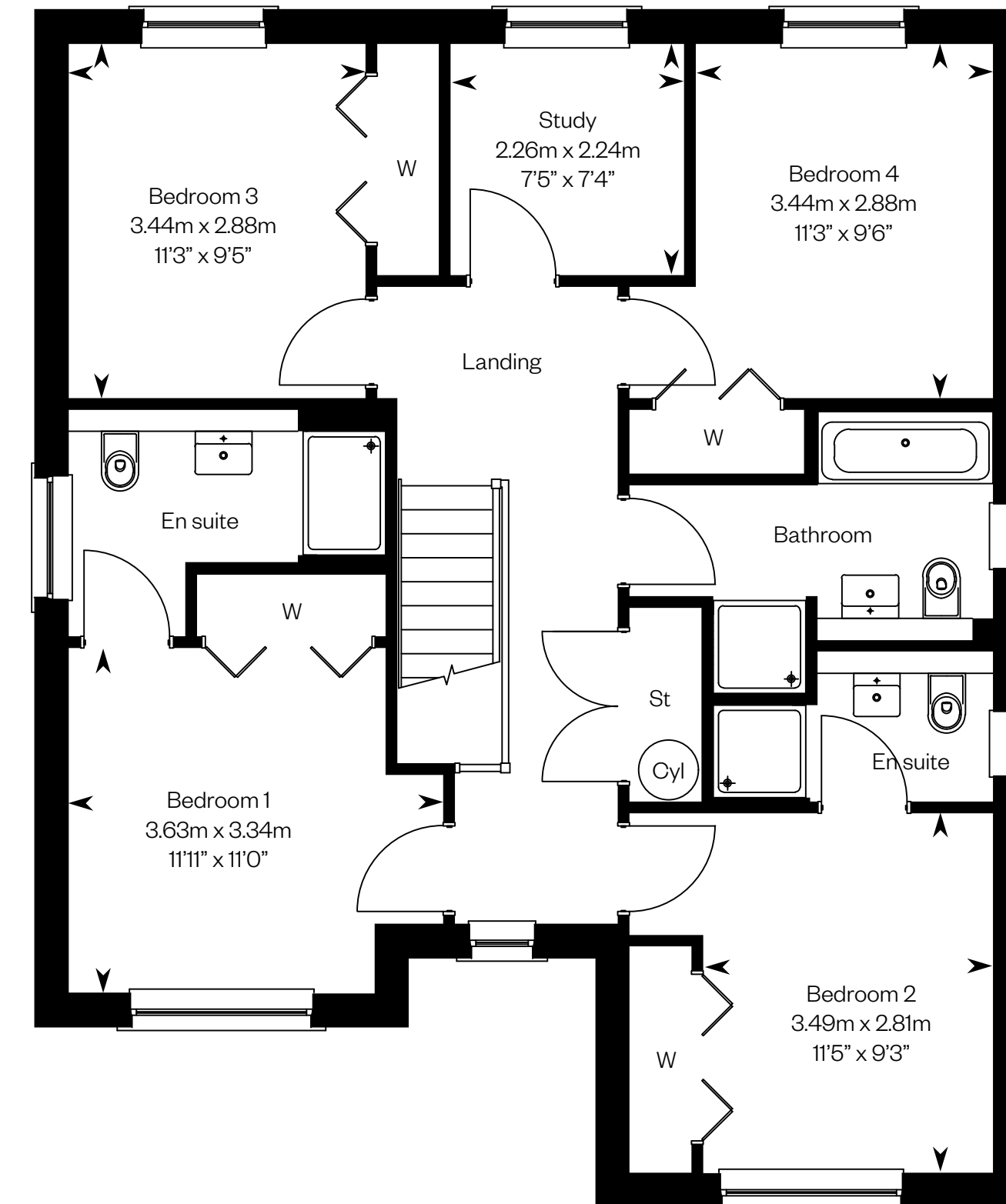
# The Colville

Plots 87, 104, 108 & 113 – as shown

Plots 105, 111, 116, 119, 135, 139 & 158 – handed



Ground floor



First floor

Please ask your Sales Consultant for further details. ST: Store cupboard. W: Wardrobe.

**IMPORTANT NOTICE TO CUSTOMERS:** The Consumer Protection from Unfair Trading Regulations 2008. Cala Homes (East) Limited operates a policy of continual product development and the specifications outlined in this brochure are indicative only. The computer generated images and photographs do not necessarily represent the actual finishings/elevation or treatments, landscaping, furnishings and fittings at this development. Information contained is accurate at date of publication on 26.06.24. See the main brochure for the full Consumer Protection statement.

# The Crichton

5 bedroom detached home

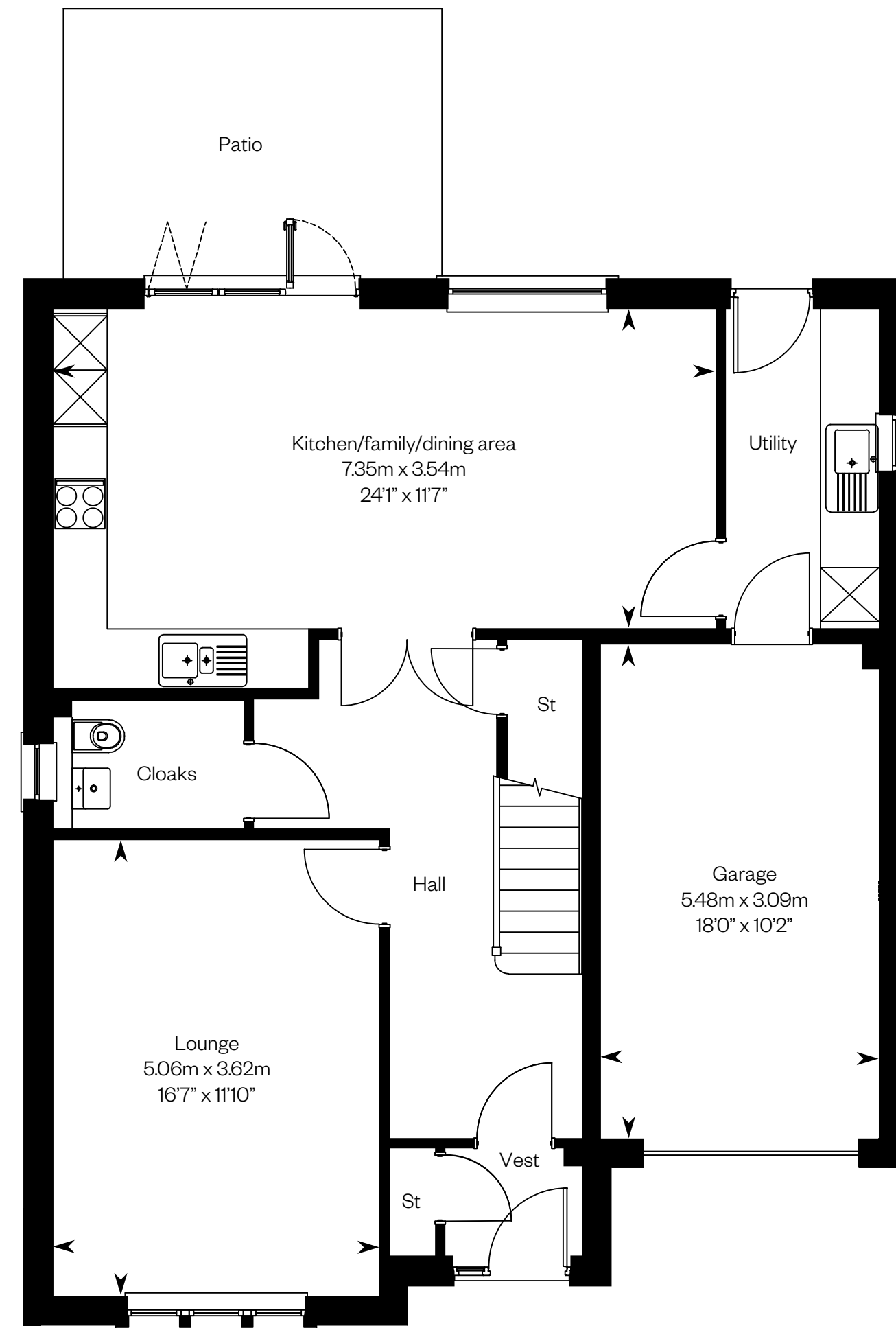
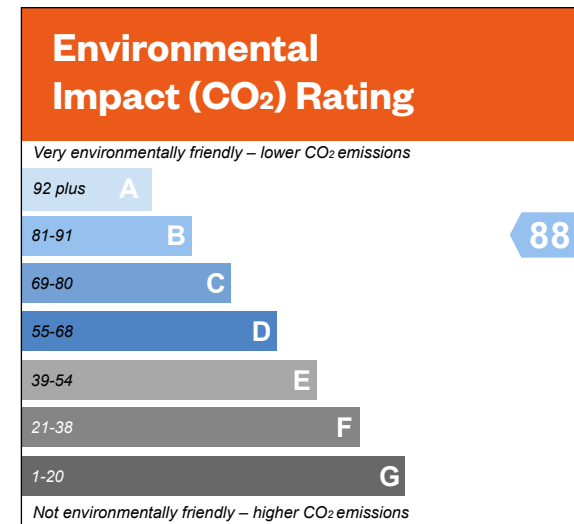
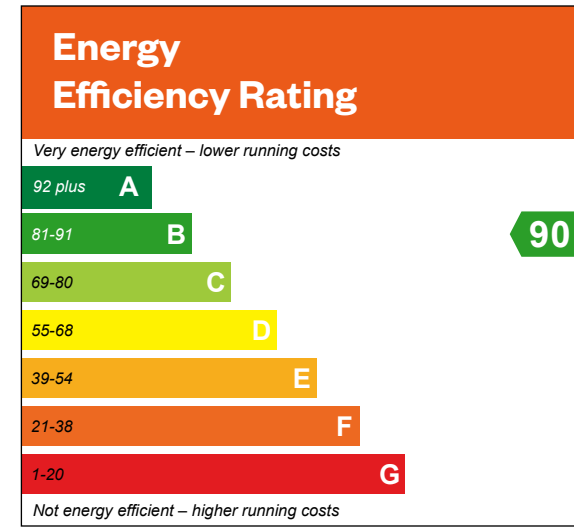


Computer Generated Image - A typical Crichton

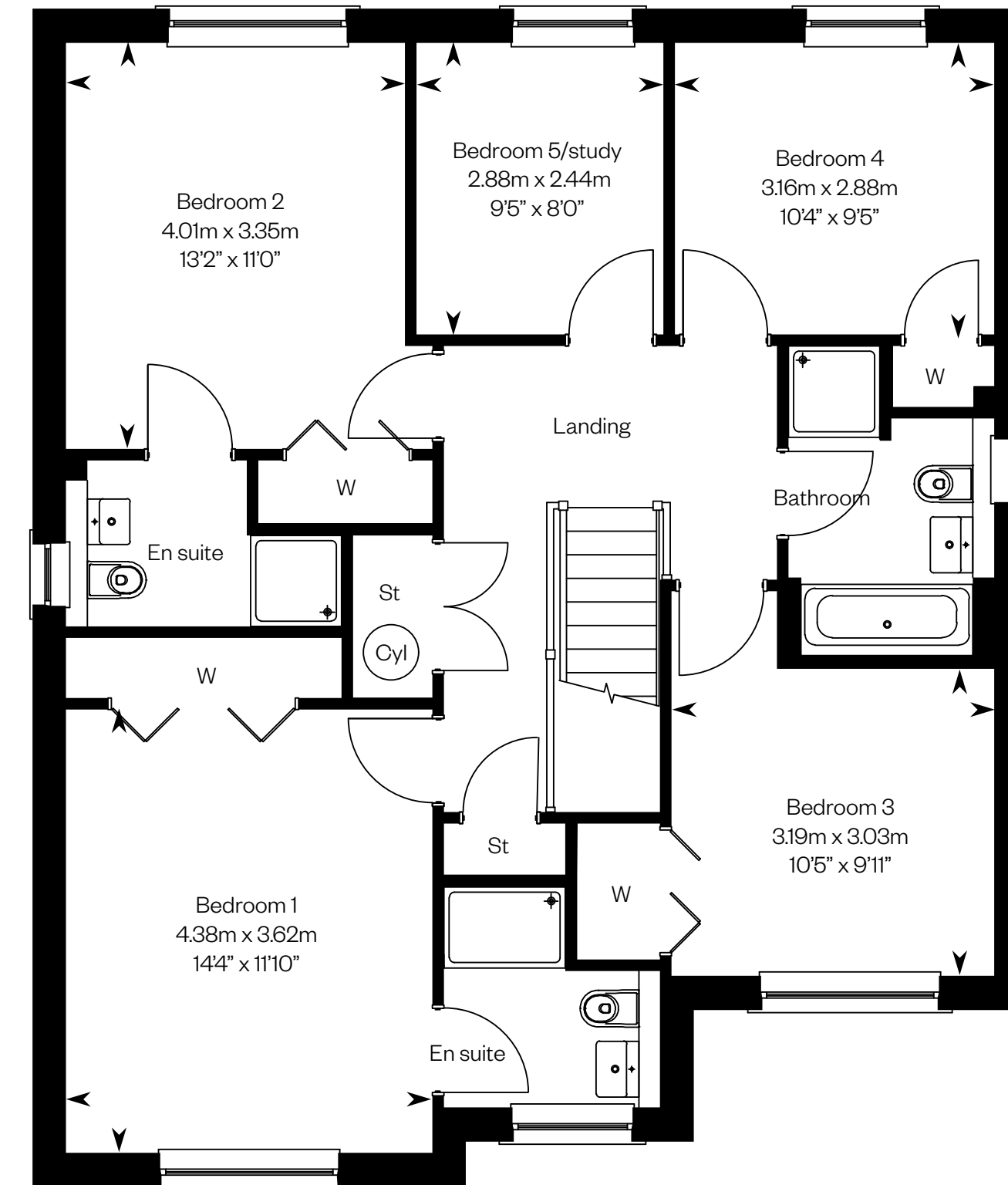
# The Crichton

Plots 90, 101, 103, 114, 124, 133, 134 & 140 – as shown

Plots 85, 100, 115, 118, 126, 141 & 159 – handed



Ground floor



First floor

Please ask your Sales Consultant for further details. ST: Store cupboard. W: Wardrobe.

**IMPORTANT NOTICE TO CUSTOMERS:** The Consumer Protection from Unfair Trading Regulations 2008. Cala Homes (East) Limited operates a policy of continual product development and the specifications outlined in this brochure are indicative only. The computer generated images and photographs do not necessarily represent the actual finishings/elevation or treatments, landscaping, furnishings and fittings at this development. Information contained is accurate at date of publication on 26.06.24. See the main brochure for the full Consumer Protection statement.

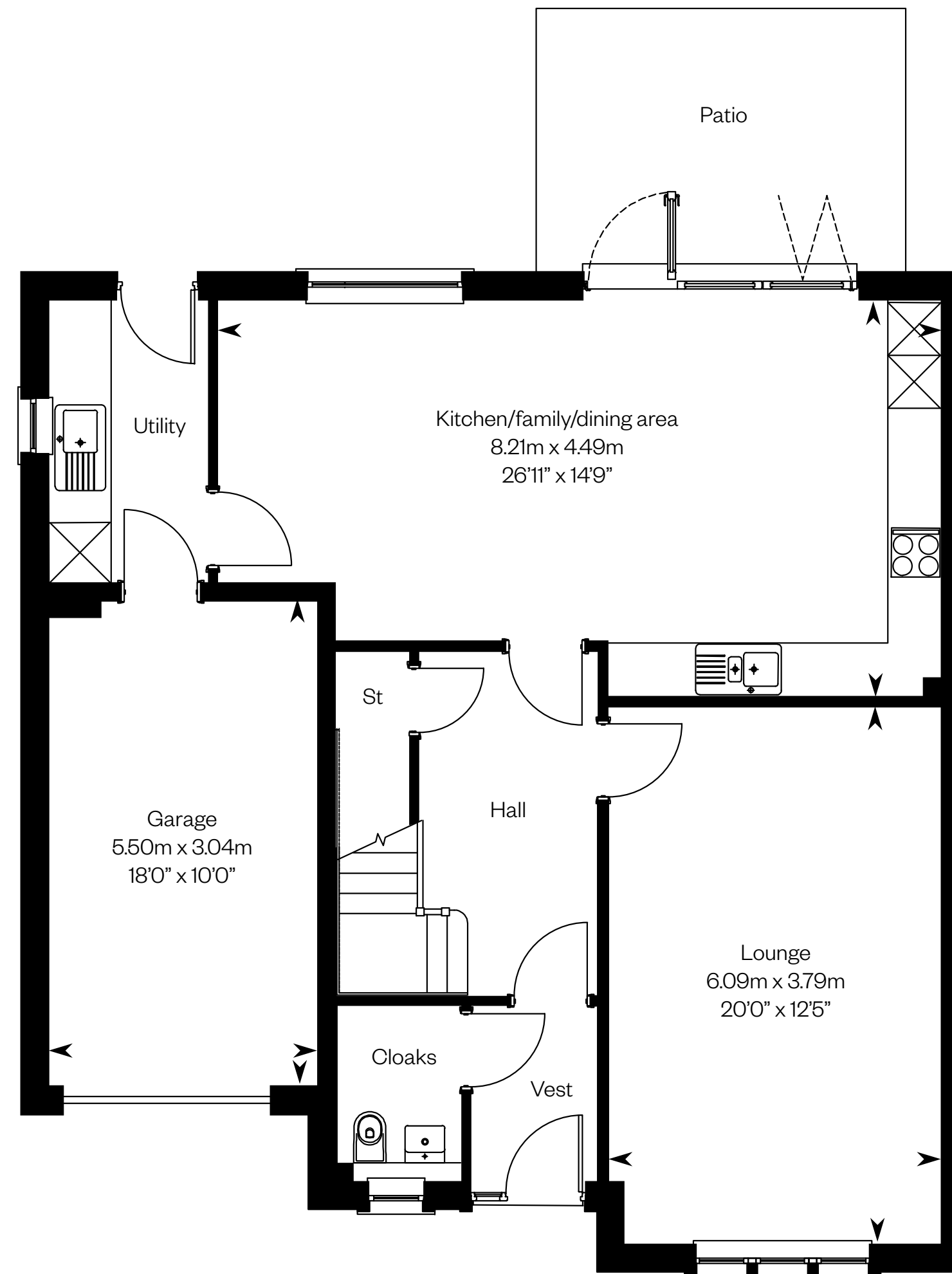
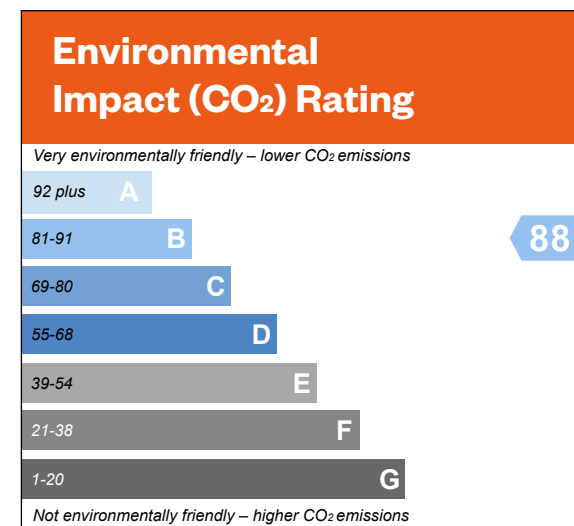
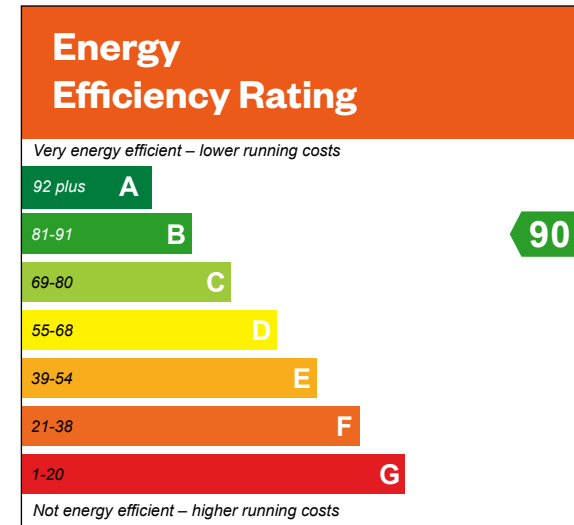
# The Darroch

5 bedroom detached home

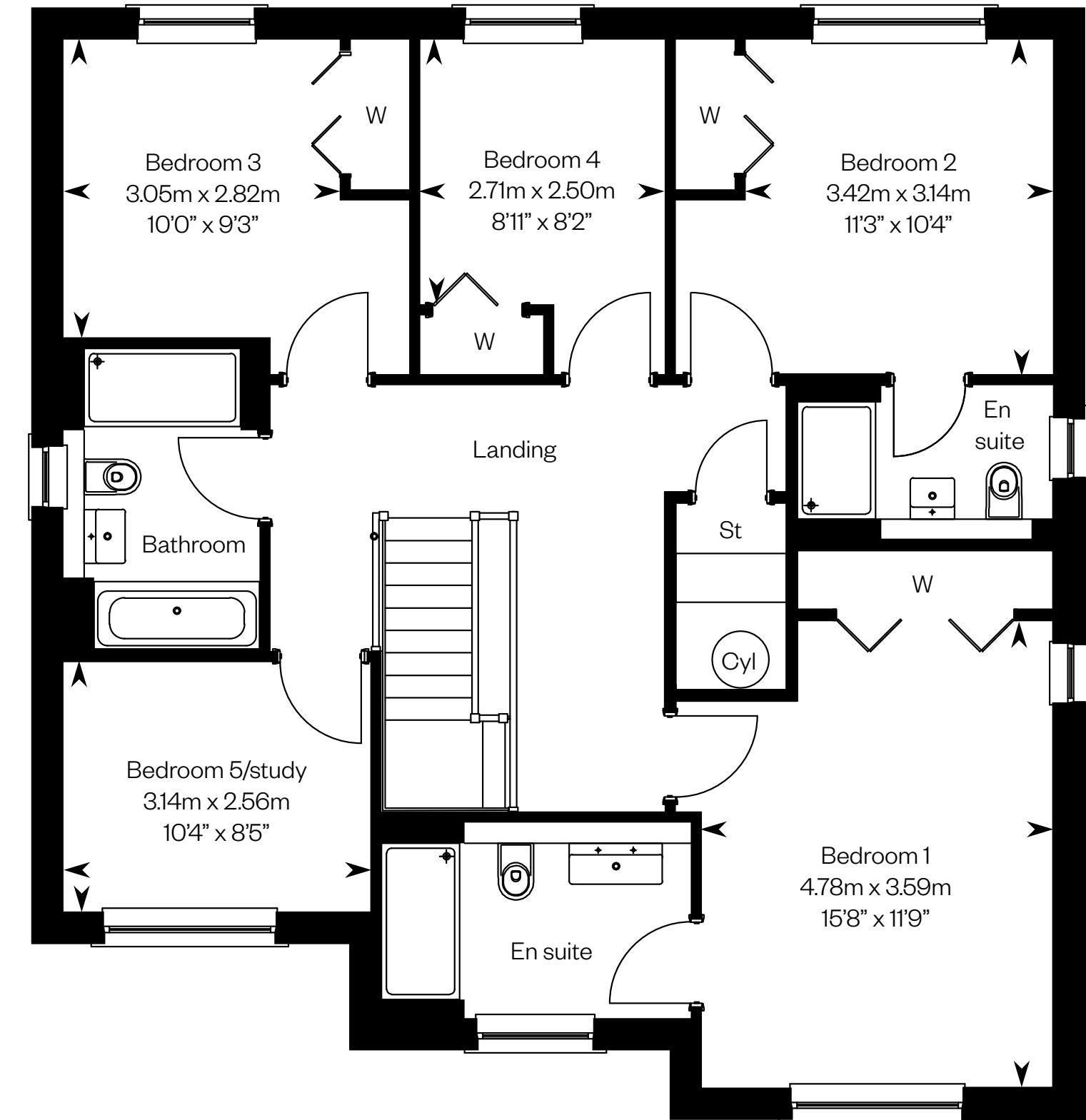


# The Darroch

Plots 88 & 89 – as shown



Ground floor



First floor

Please ask your Sales Consultant for further details. ST: Store cupboard. W: Wardrobe.

**IMPORTANT NOTICE TO CUSTOMERS:** The Consumer Protection from Unfair Trading Regulations 2008. Cala Homes (East) Limited operates a policy of continual product development and the specifications outlined in this brochure are indicative only. The computer generated images and photographs do not necessarily represent the actual finishings/elevation or treatments, landscaping, furnishings and fittings at this development. Information contained is accurate at date of publication on 26.06.24. See the main brochure for the full Consumer Protection statement.

# The Dewar

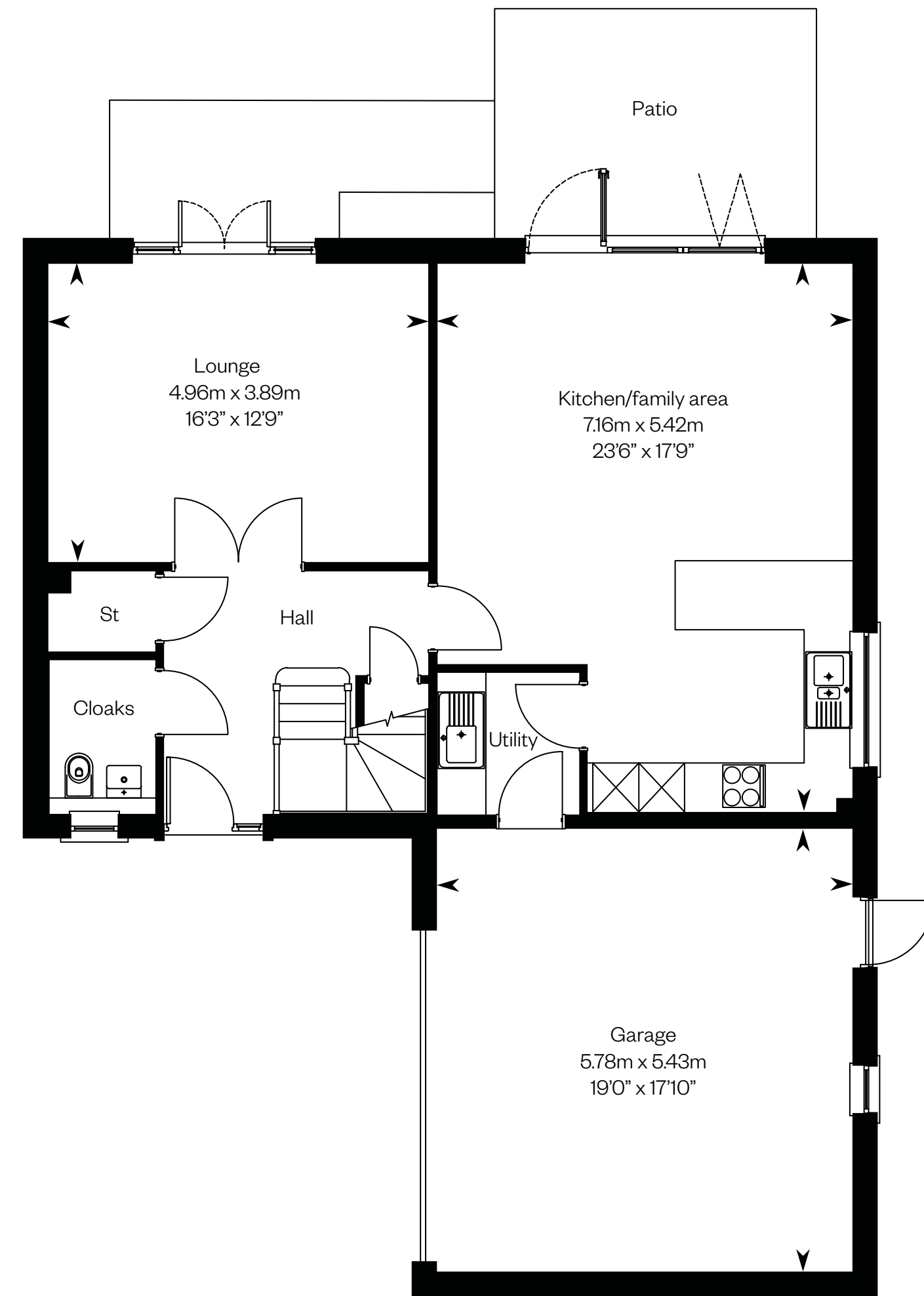
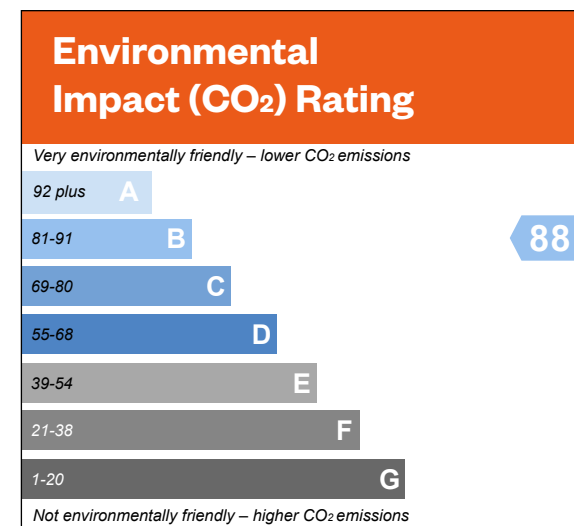
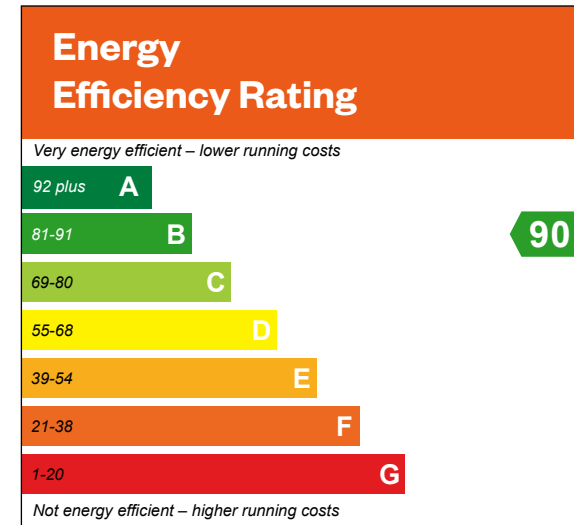
5 bedroom detached home



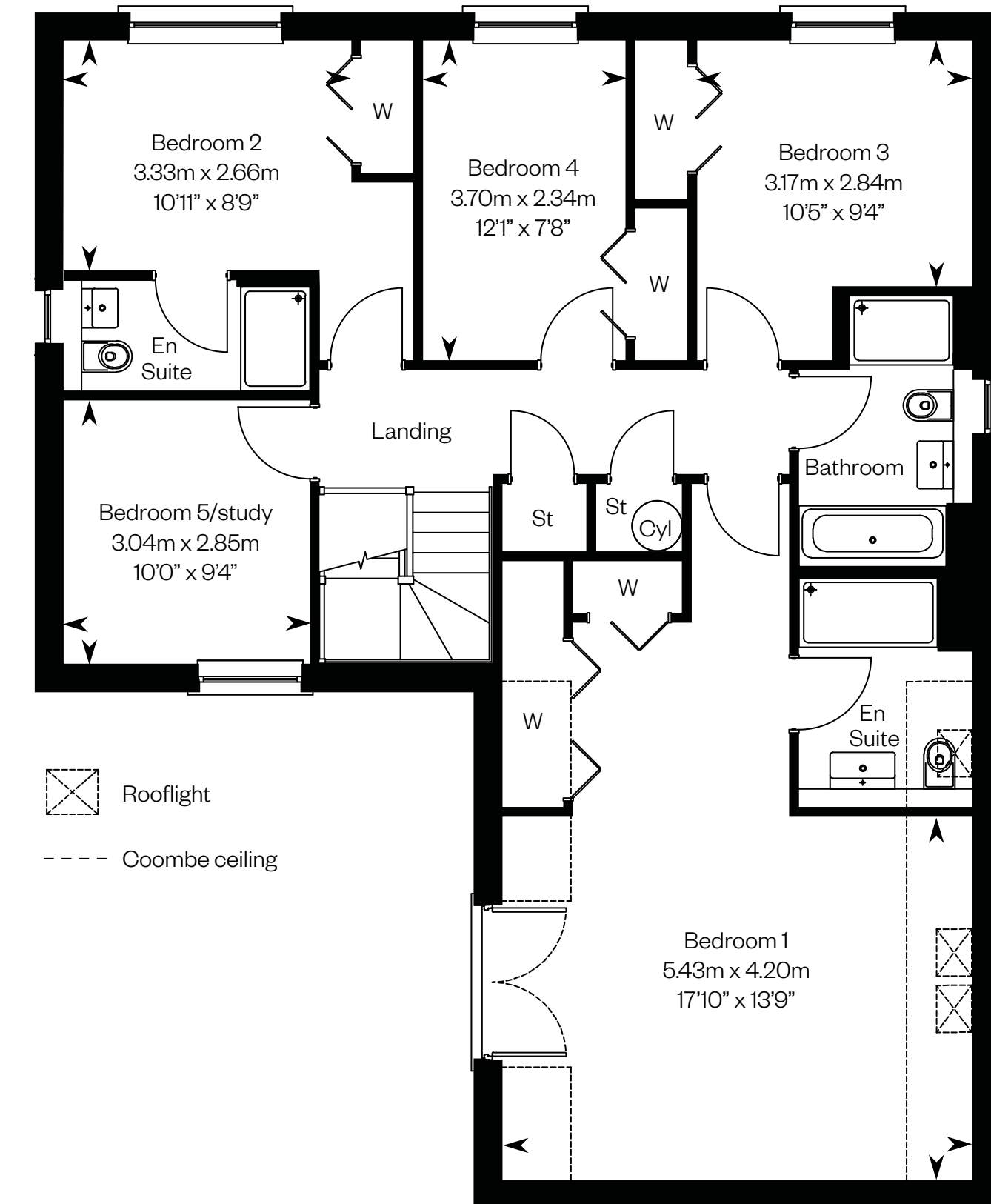
Computer Generated Image - A typical Dewar

# The Dewar

Plot 109 – handed



Ground floor



First floor

Please ask your Sales Consultant for further details. ST: Store cupboard. W: Wardrobe.

IMPORTANT NOTICE TO CUSTOMERS: The Consumer Protection from Unfair Trading Regulations 2008. Cala Homes (East) Limited operates a policy of continual product development and the specifications outlined in this brochure are indicative only. The computer generated images and photographs do not necessarily represent the actual finishings/elevation or treatments, landscaping, furnishings and fittings at this development. Information contained is accurate at date of publication on 26.06.24. See the main brochure for the full Consumer Protection statement.



# The Elliot

4 bedroom detached home with study

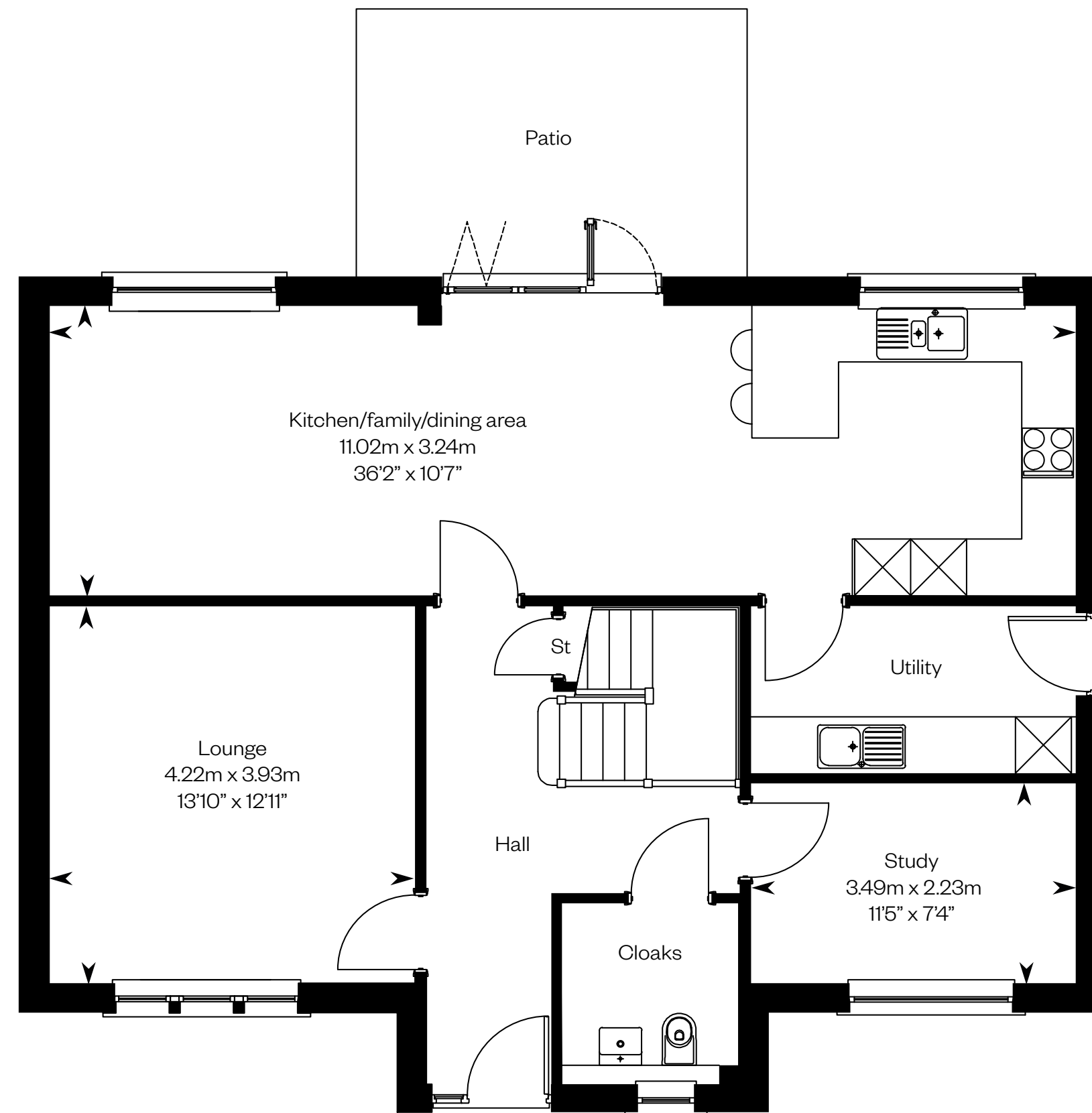
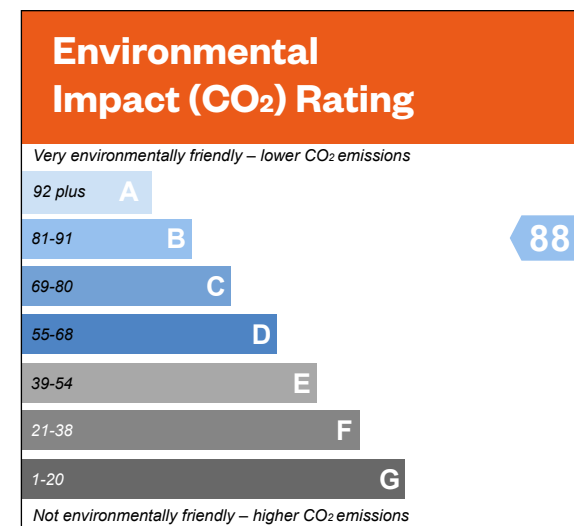
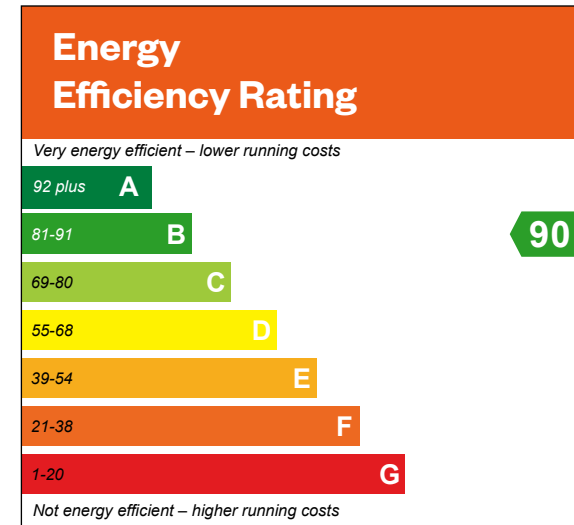


Computer Generated Image - A typical Elliot

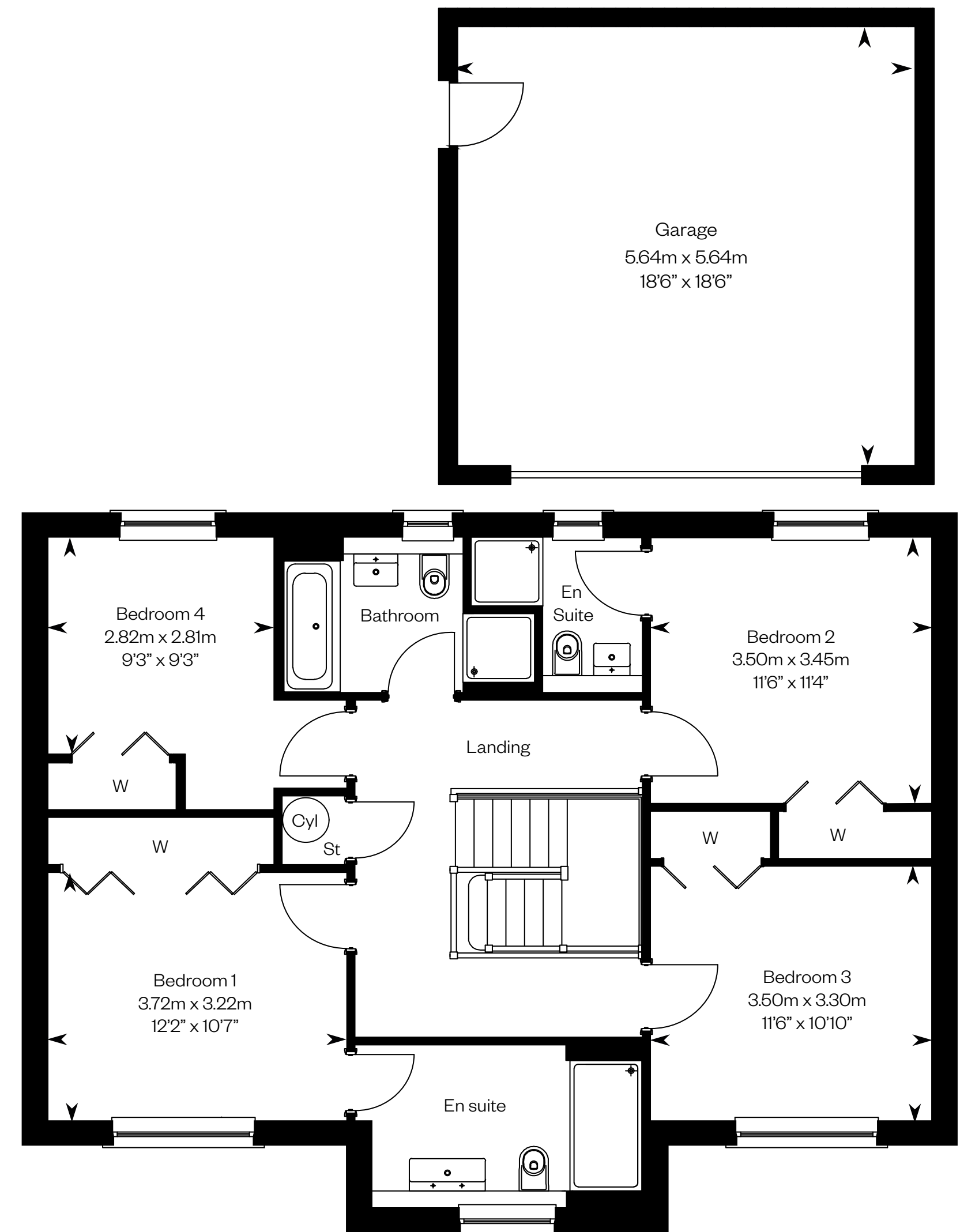
# The Elliot

Plot 136 – as shown

Plots 148 & 149 – handed



Ground floor



First floor

Please ask your Sales Consultant for further details. ST: Store cupboard. W: Wardrobe.

**IMPORTANT NOTICE TO CUSTOMERS:** The Consumer Protection from Unfair Trading Regulations 2008. Cala Homes (East) Limited operates a policy of continual product development and the specifications outlined in this brochure are indicative only. The computer generated images and photographs do not necessarily represent the actual finishings/elevation or treatments, landscaping, furnishings and fittings at this development. Information contained is accurate at date of publication on 26.06.24. See the main brochure for the full Consumer Protection statement.

# The Garvie

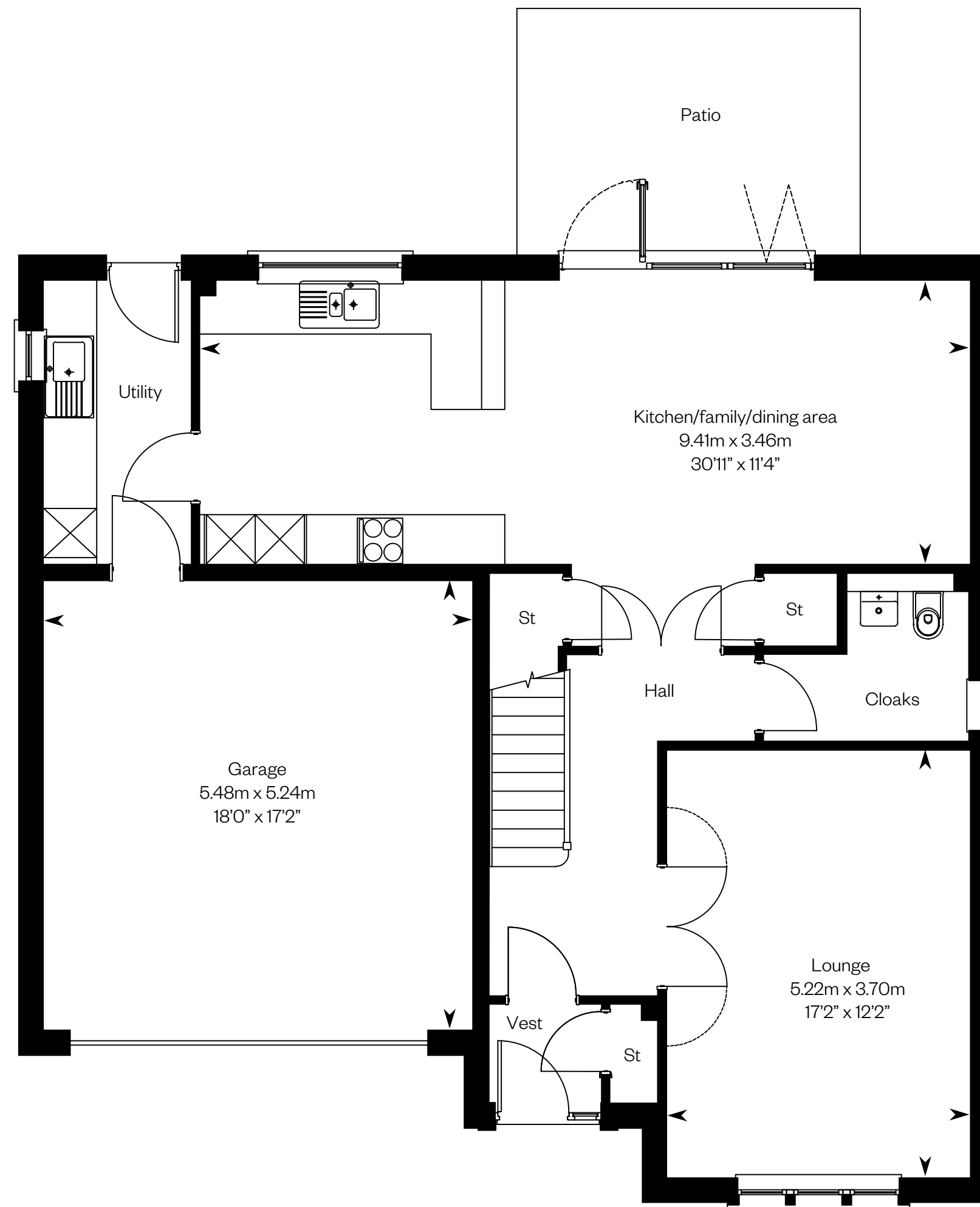
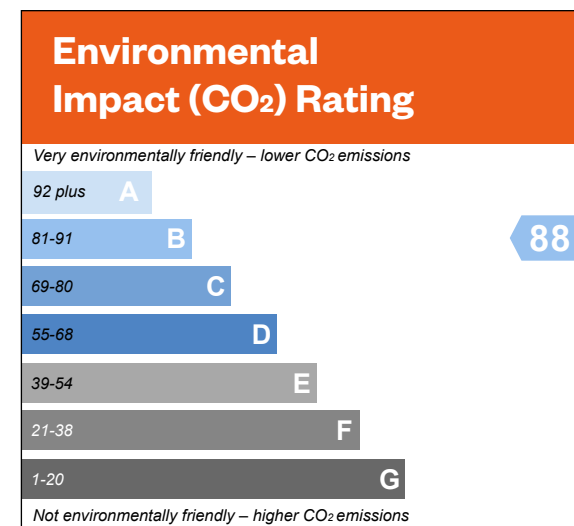
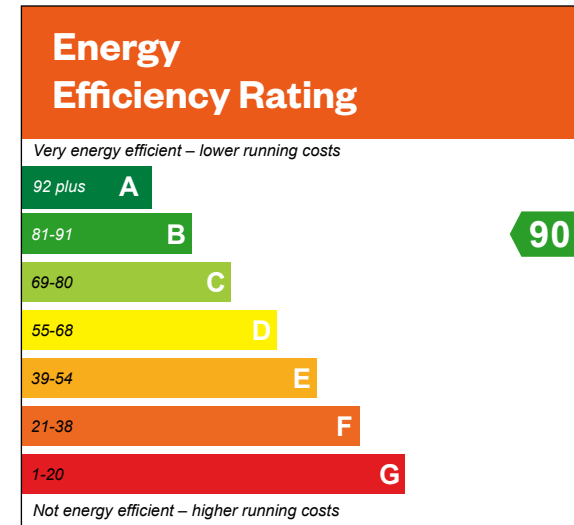
5 bedroom detached home



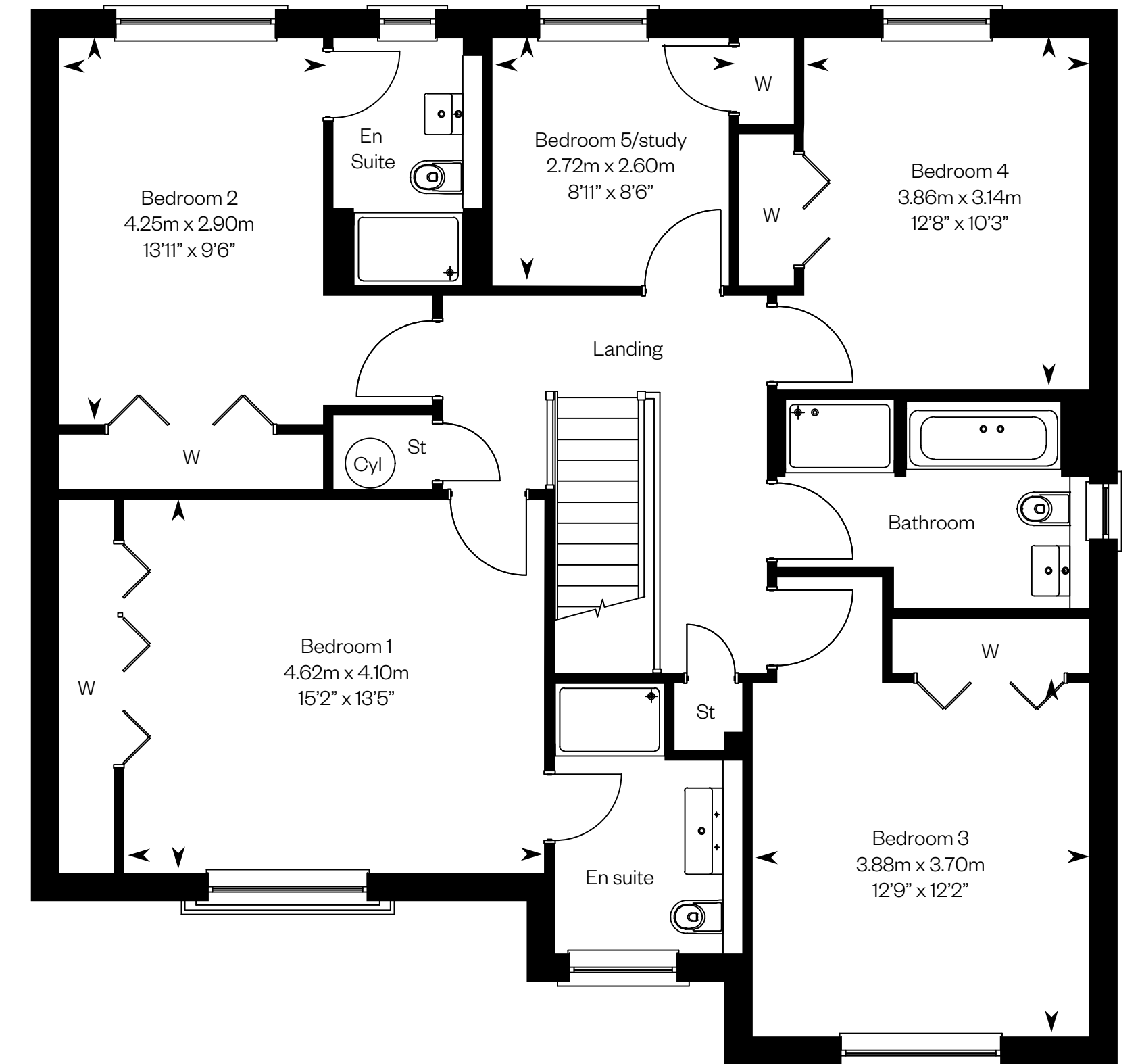
# The Garvie

Plots 95, 127, 130, 146 & 155 – as shown

Plots 91, 98, 99, 145 & 156 – handed



Ground floor



First floor

Please ask your Sales Consultant for further details. ST: Store cupboard. W: Wardrobe.

IMPORTANT NOTICE TO CUSTOMERS: The Consumer Protection from Unfair Trading Regulations 2008. Cala Homes (East) Limited operates a policy of continual product development and the specifications outlined in this brochure are indicative only. The computer generated images and photographs do not necessarily represent the actual finishings/elevation or treatments, landscaping, furnishings and fittings at this development. Information contained is accurate at date of publication on 26.06.24. See the main brochure for the full Consumer Protection statement.

# The Kennedy

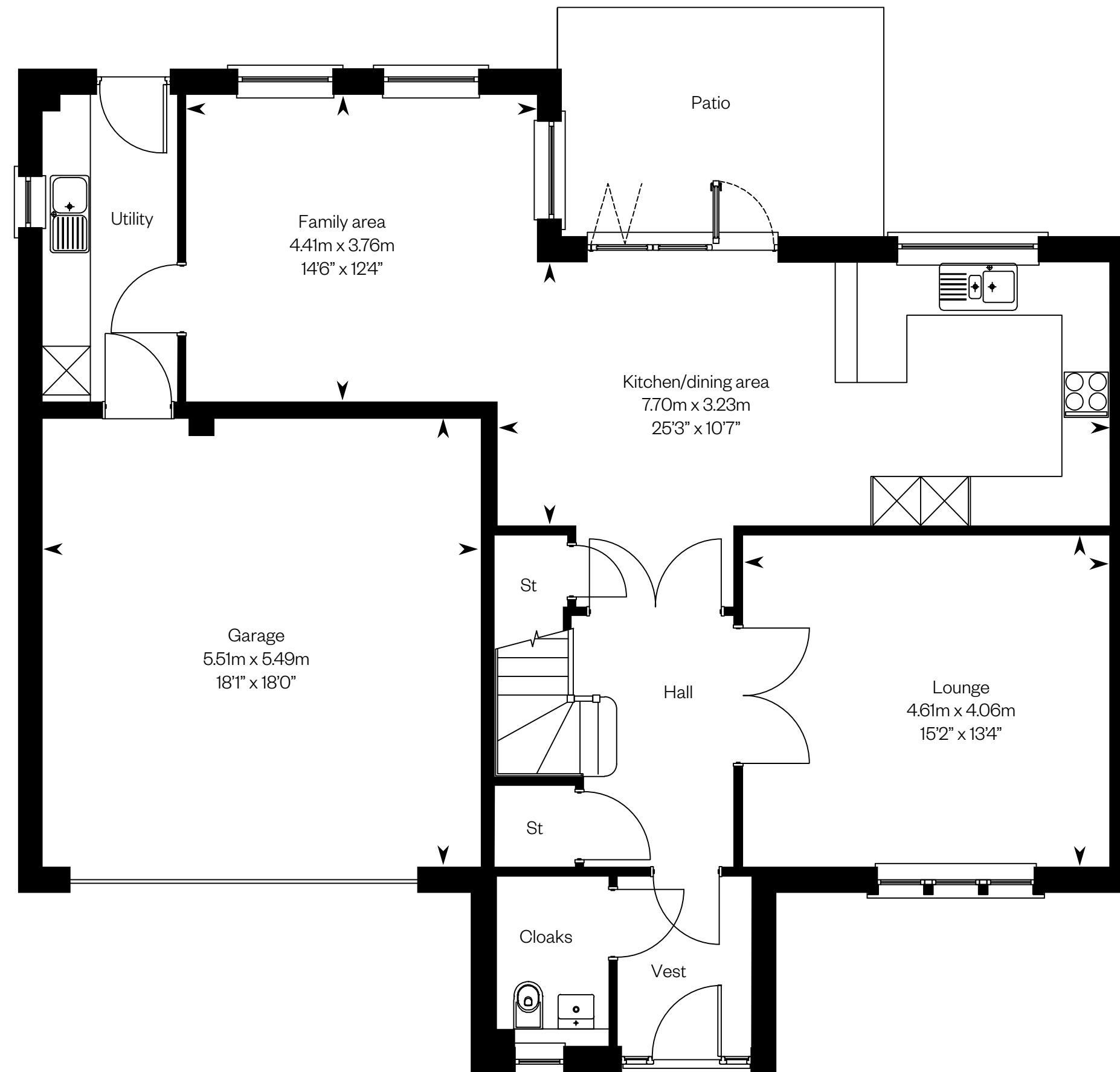
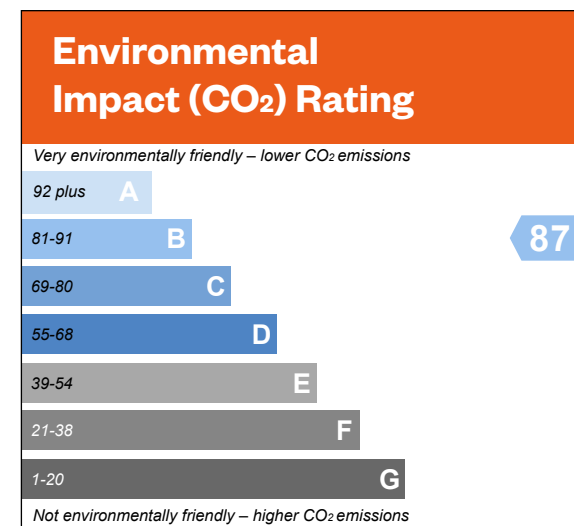
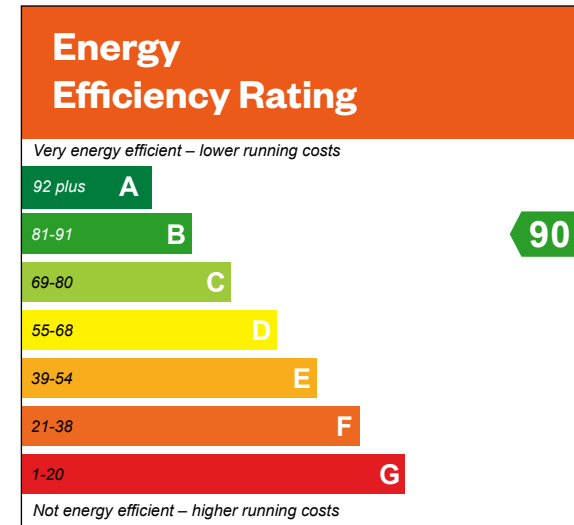
5 bedroom detached home



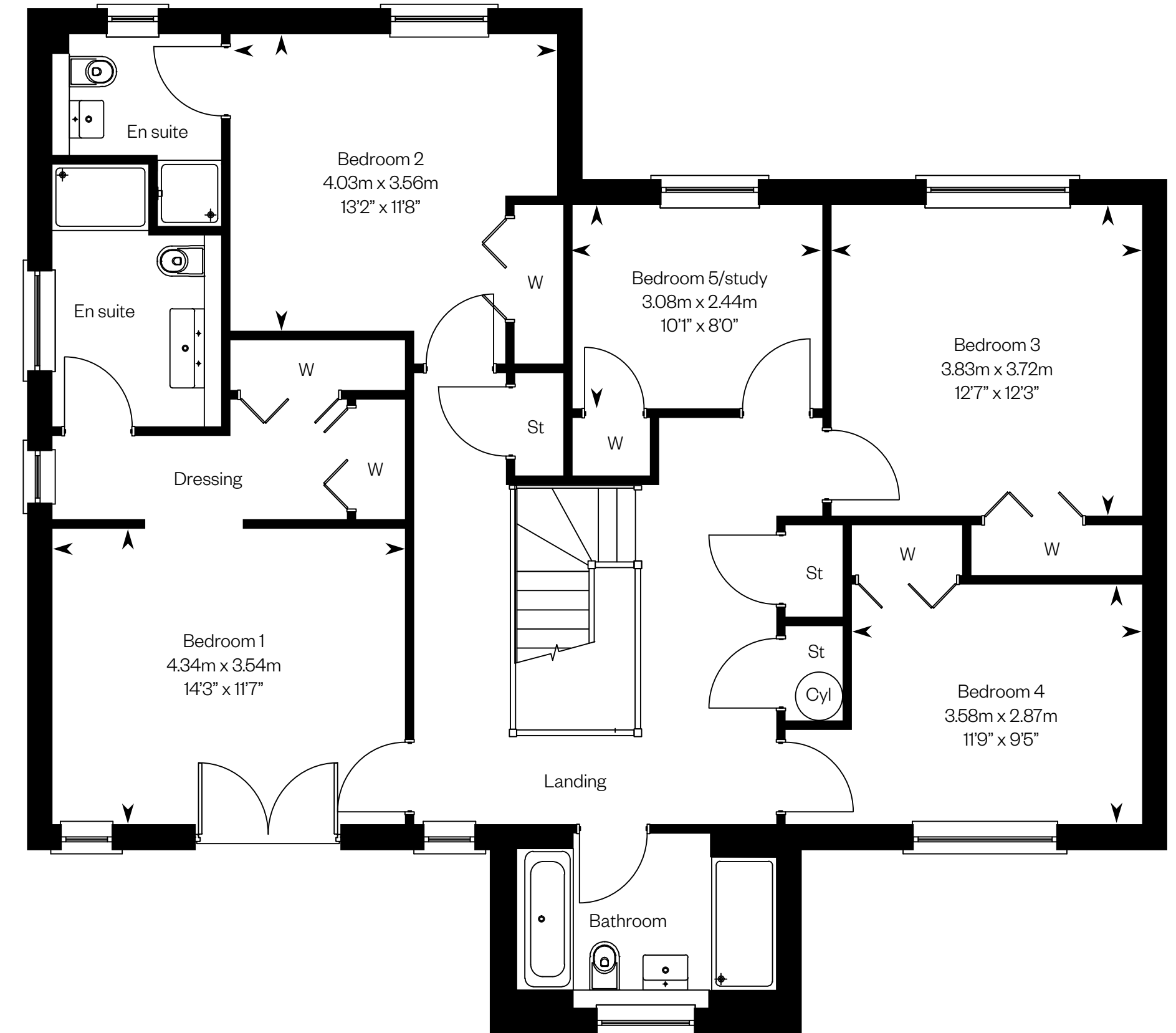
Computer Generated Image - A typical Kennedy

# The Kennedy

Plots 131 & 143 – handed



Ground floor



First floor

Please ask your Sales Consultant for further details. ST: Store cupboard. W: Wardrobe.

IMPORTANT NOTICE TO CUSTOMERS: The Consumer Protection from Unfair Trading Regulations 2008. Cala Homes (East) Limited operates a policy of continual product development and the specifications outlined in this brochure are indicative only. The computer generated images and photographs do not necessarily represent the actual finishings/elevation or treatments, landscaping, furnishings and fittings at this development. Information contained is accurate at date of publication on 26.06.24. See the main brochure for the full Consumer Protection statement.

# The Lewis

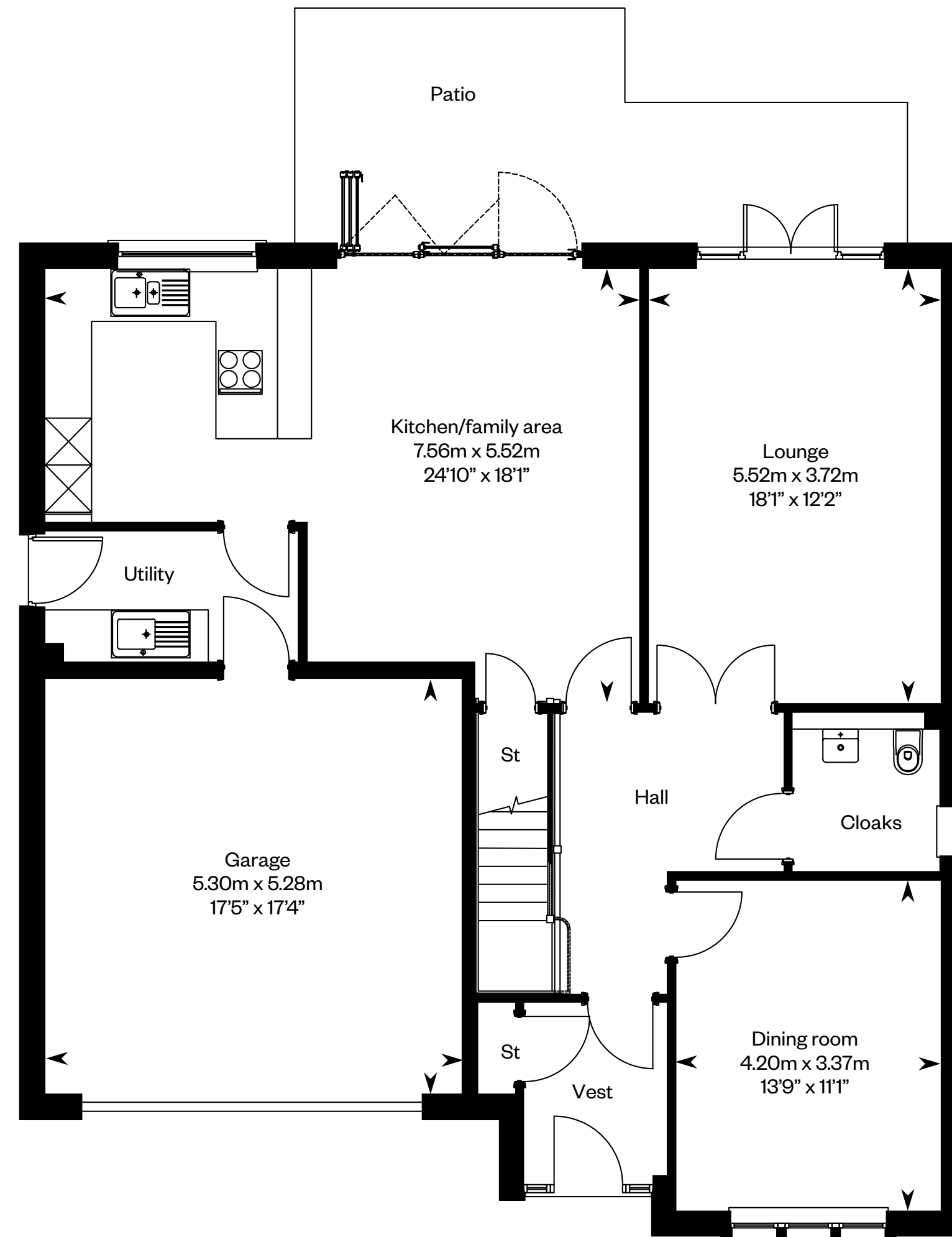
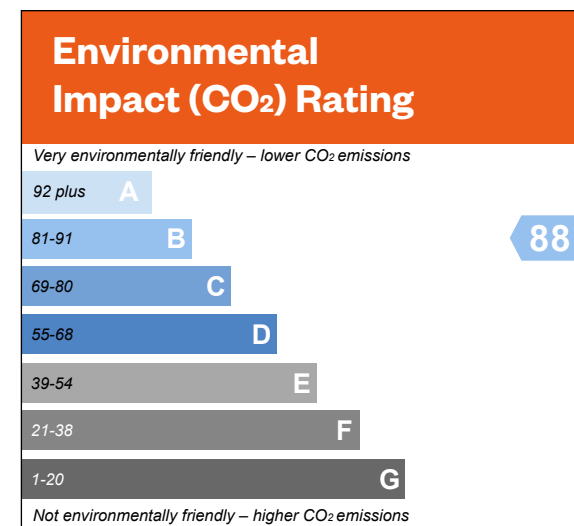
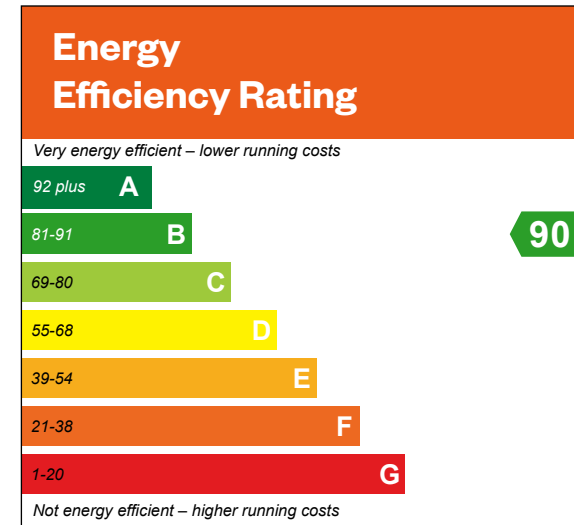
5 bedroom detached home



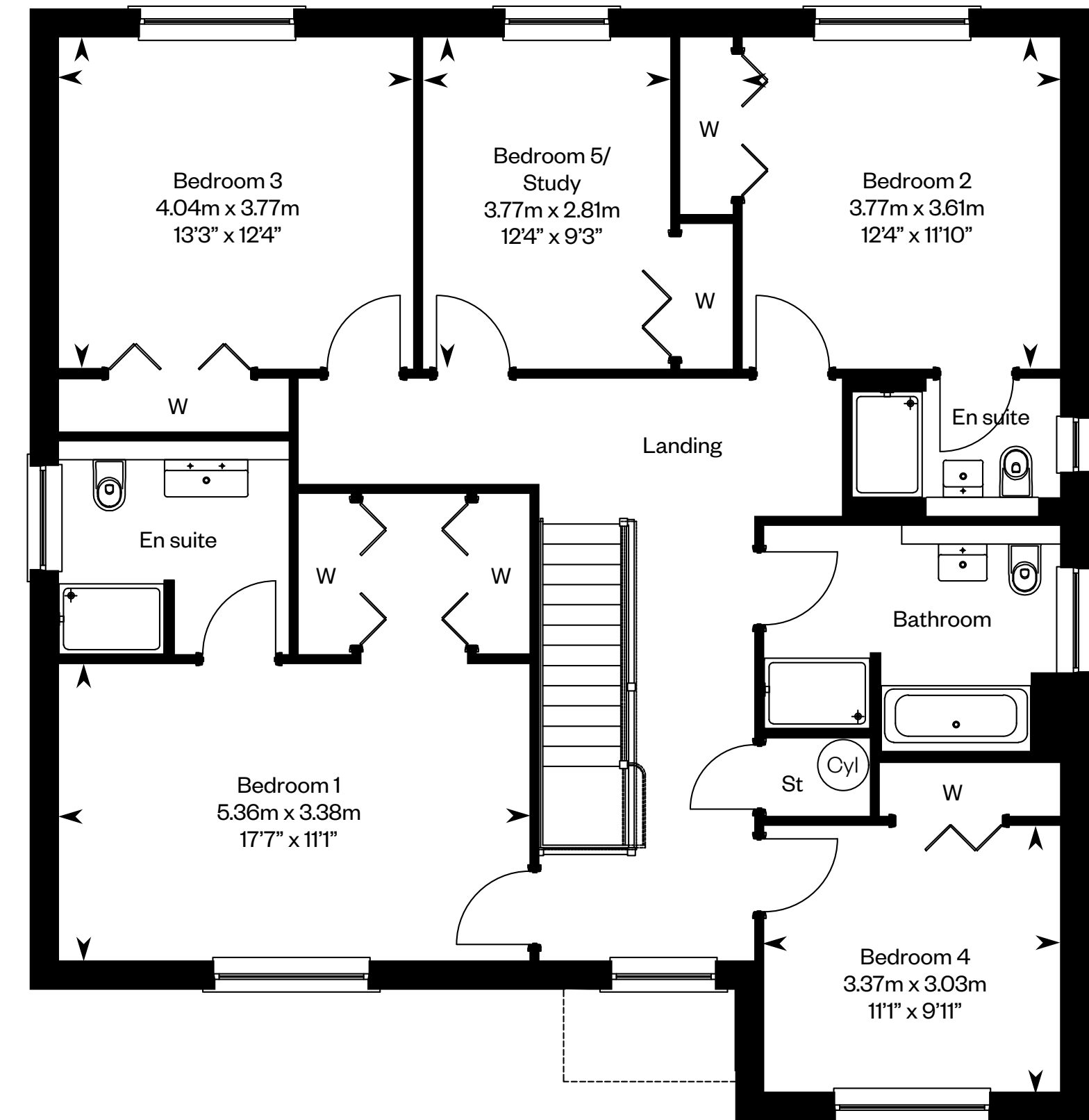
# The Lewis

Plots 92, 97 & 129 – as shown

Plot 96 – handed



Ground floor



First floor

Please ask your Sales Consultant for further details. ST: Store cupboard. W: Wardrobe.

**IMPORTANT NOTICE TO CUSTOMERS:** The Consumer Protection from Unfair Trading Regulations 2008. Cala Homes (East) Limited operates a policy of continual product development and the specifications outlined in this brochure are indicative only. The computer generated images and photographs do not necessarily represent the actual finishings/elevation or treatments, landscaping, furnishings and fittings at this development. Information contained is accurate at date of publication on 26.06.24. See the main brochure for the full Consumer Protection statement.



# The Lowther

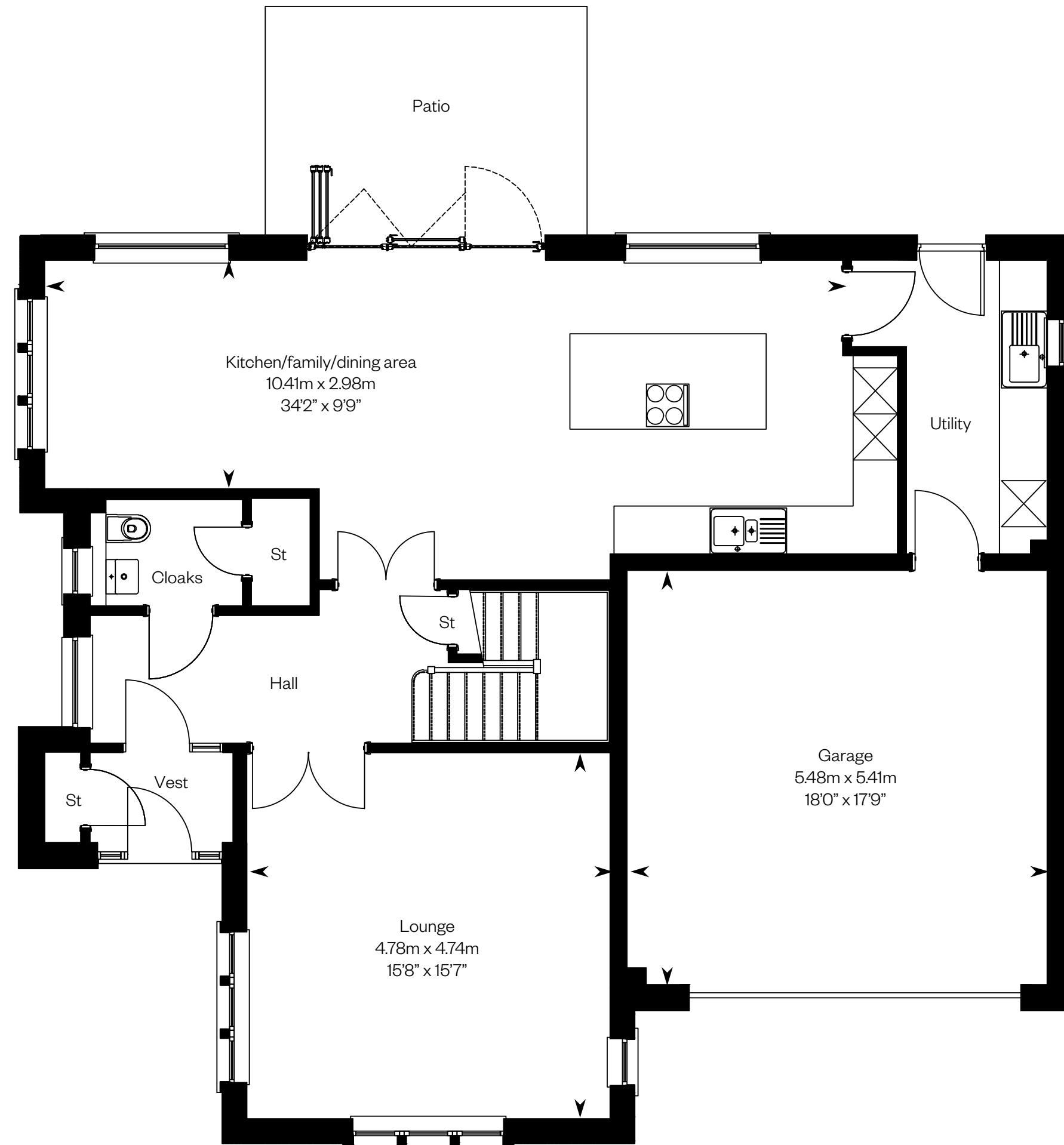
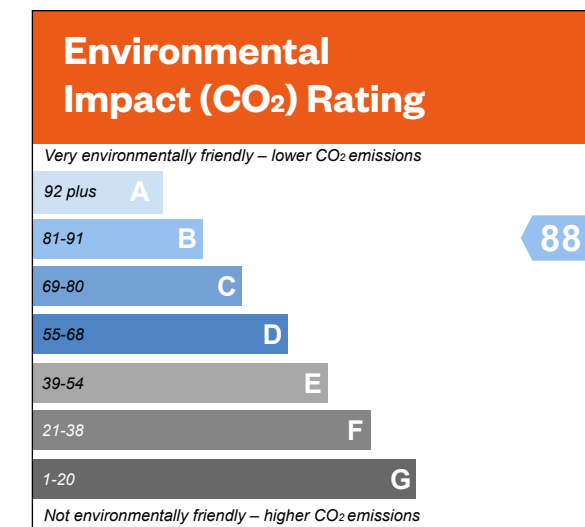
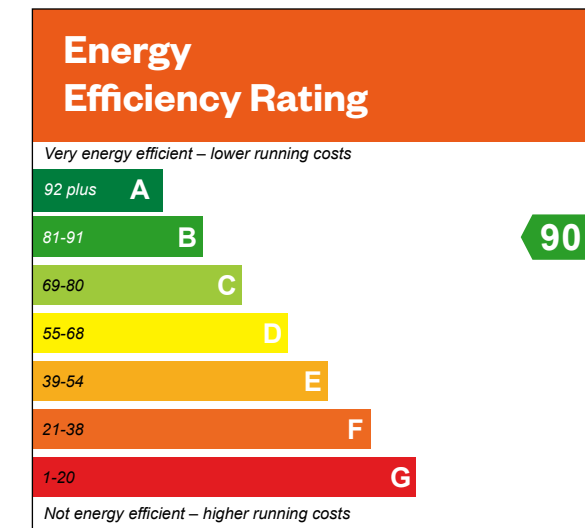
5 bedroom detached home



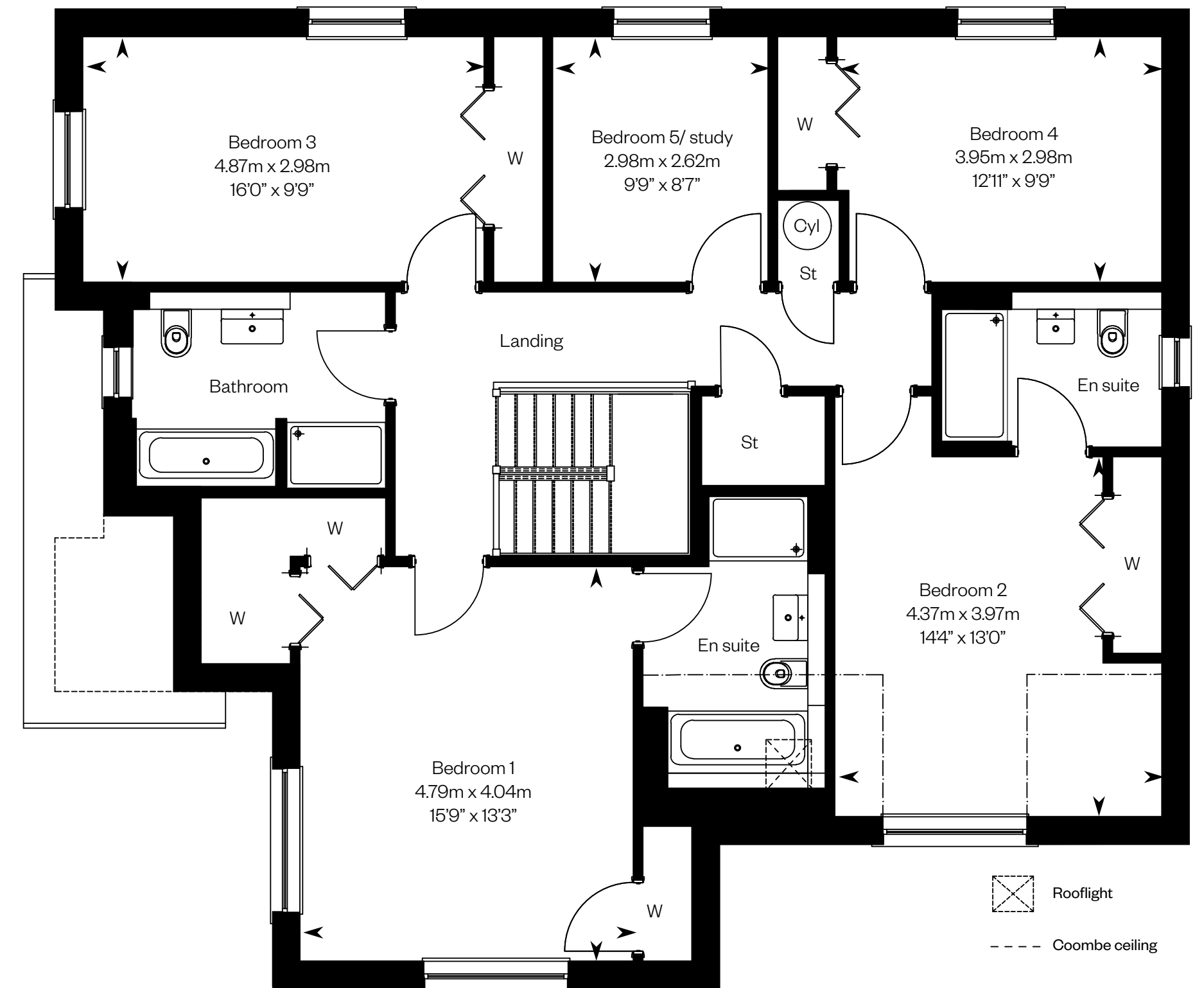
# The Lowther

Plots 93 & 132 – as shown

Plots 94 & 128 – handed



Ground floor



First floor

⊠ Rooflight  
 - - - - - Coombe ceiling

Please ask your Sales Consultant for further details. ST: Store cupboard. W: Wardrobe.

IMPORTANT NOTICE TO CUSTOMERS: The Consumer Protection from Unfair Trading Regulations 2008. Cala Homes (East) Limited operates a policy of continual product development and the specifications outlined in this brochure are indicative only. The computer generated images and photographs do not necessarily represent the actual finishings/elevation or treatments, landscaping, furnishings and fittings at this development. Information contained is accurate at date of publication on 26.06.24. See the main brochure for the full Consumer Protection statement.