



Computer Generated Image – A typical street scene at Southbank by CALA

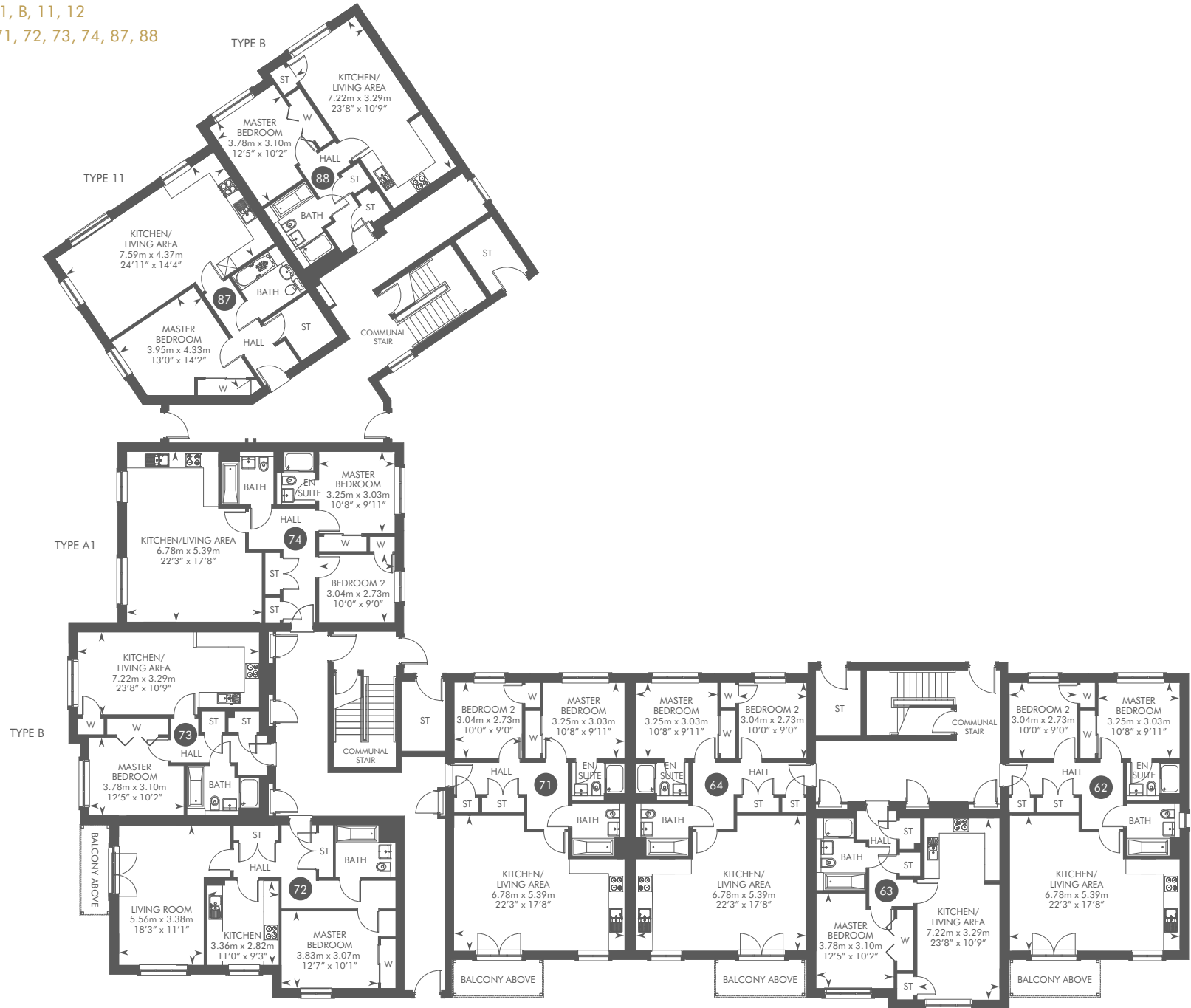
SOUTHBANK BY CALA

THE APARTMENTS – MISSION

1 & 2 BEDROOM APARTMENTS



APARTMENT TYPE A1, B, 11, 12
 PLOTS 62, 63, 64, 71, 72, 73, 74, 87, 88



GROUND FLOOR

ST: Store cupboard. W: Wardrobe.

TYPE 12

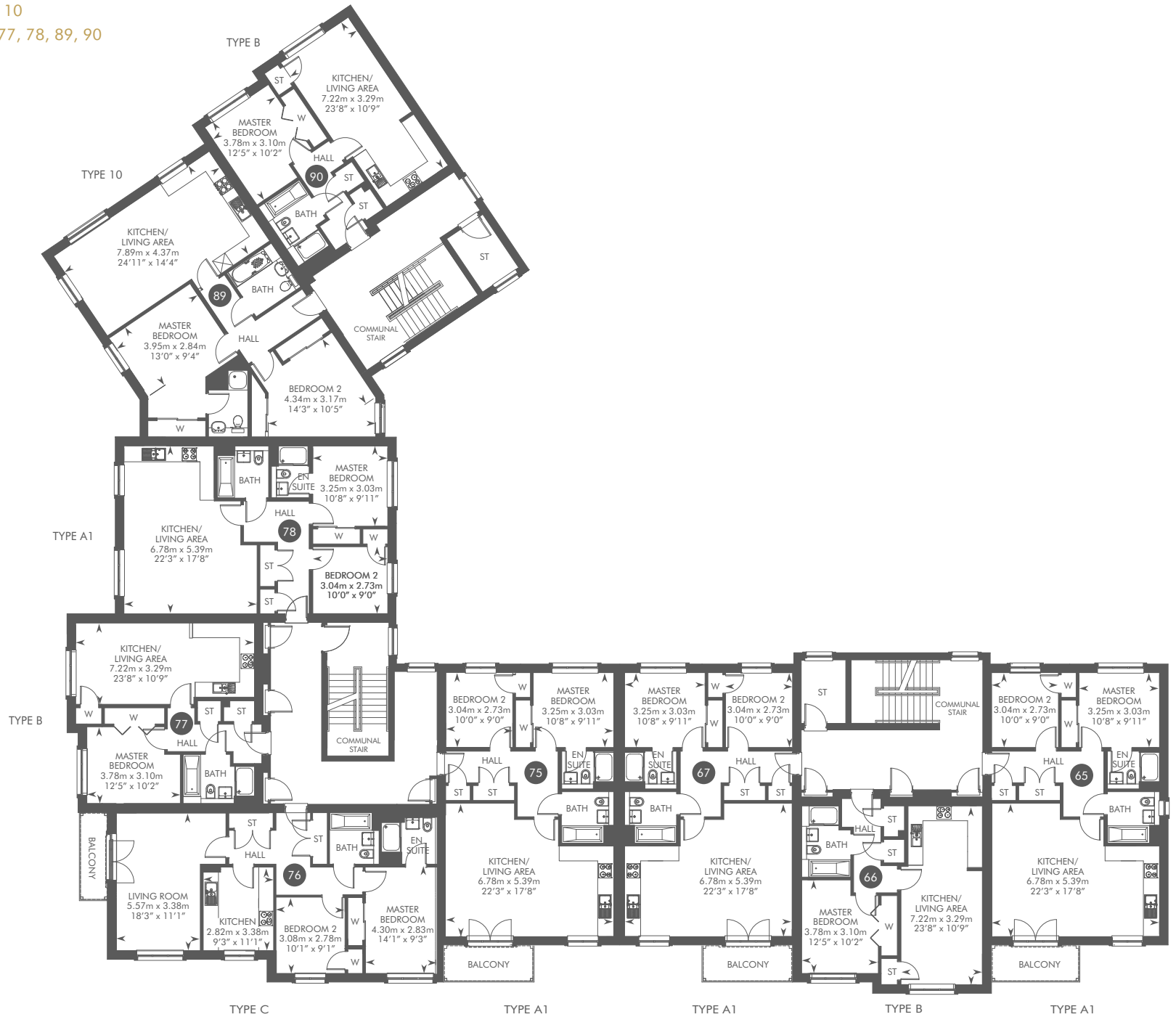
TYPE A1

TYPE A1

TYPE B

TYPE A1

APARTMENT TYPE A1, B, C, 10
 PLOTS 65, 66, 67, 75, 76, 77, 78, 89, 90



FIRST FLOOR





Lifestyle photography

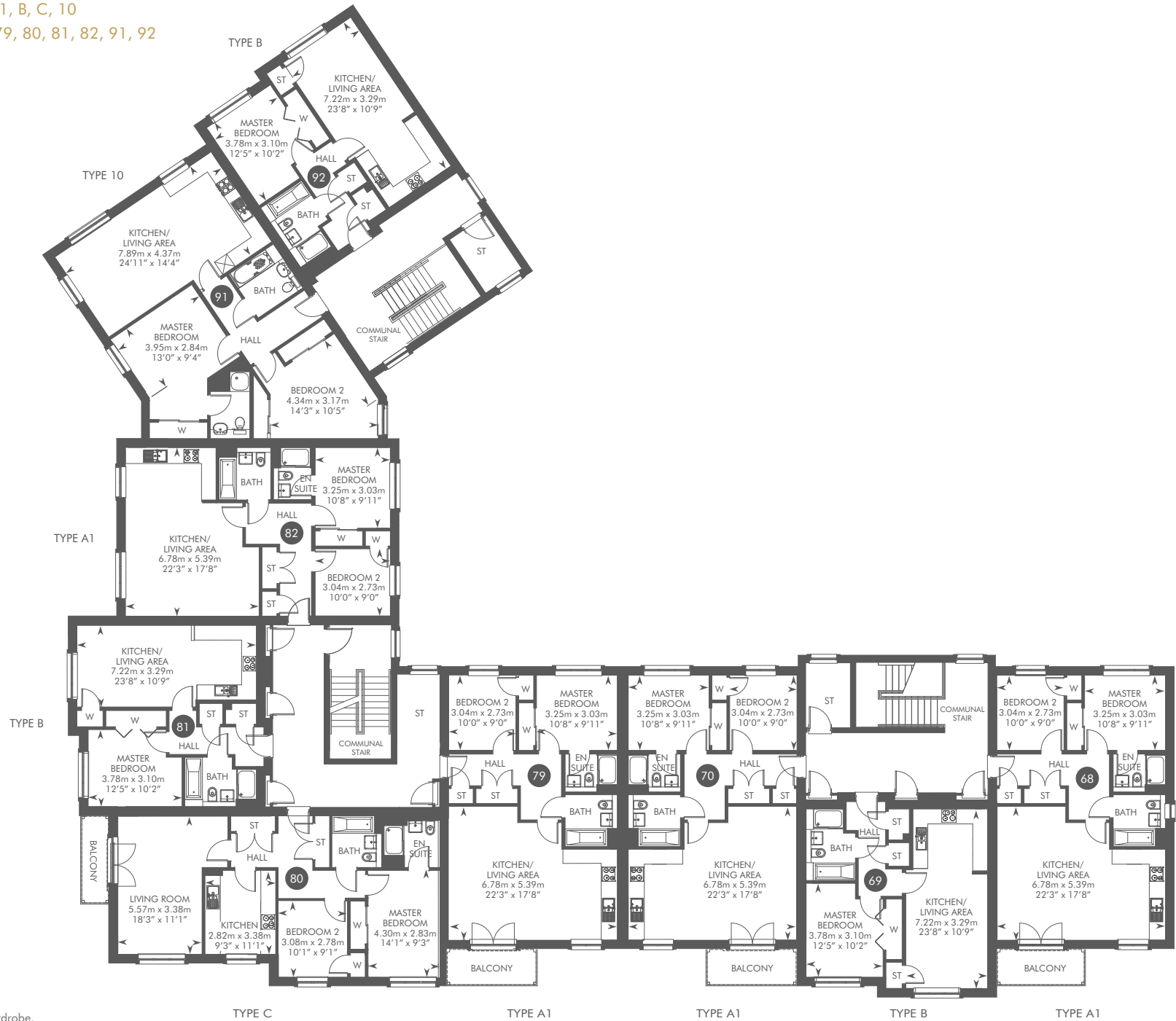


Lifestyle photography



Local photography

APARTMENT TYPE A1, B, C, 10
 PLOTS 68, 69, 70, 79, 80, 81, 82, 91, 92



SECOND FLOOR

ST: Store cupboard. W: Wardrobe.

TYPE C

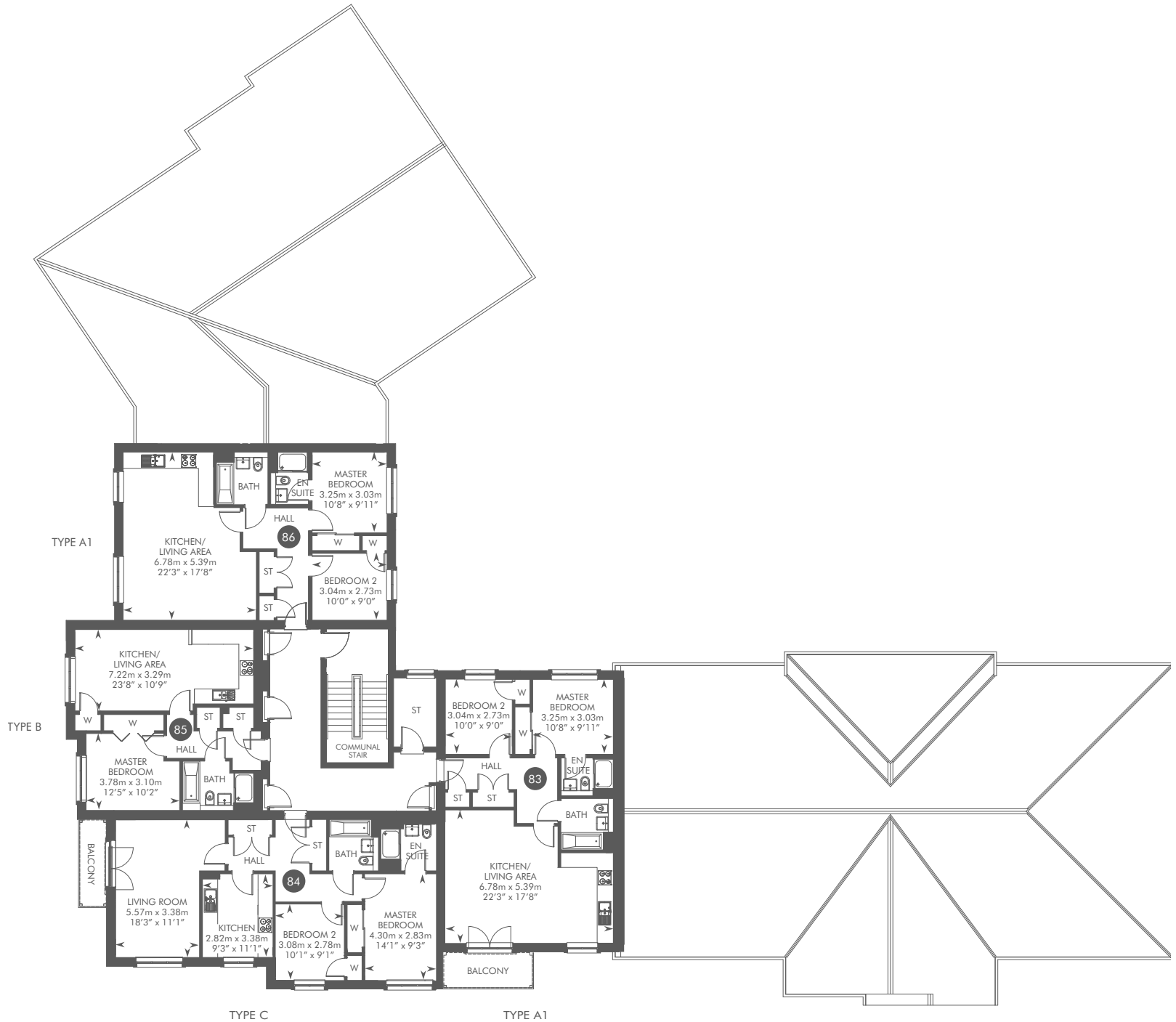
TYPE A1

TYPE A1

TYPE B

TYPE A1

APARTMENT TYPE A1, B, C
PLOTS 83, 84, 85, 86



THIRD FLOOR

IMPORTANT NOTICE TO CUSTOMERS: The Consumer Protection from Unfair Trading Regulations 2008. CALA Homes (North) Limited operates a policy of continual product development and the specifications outlined in this brochure are indicative only. CALA reserves the right to implement minor changes to the sizes and specifications shown on any plans or drawings in this brochure without warning. Where alterations to the design, construction or materials to be used in the construction of the property would materially alter the internal floor space, appearance or market value of the property, we will ensure that these changes are communicated to potential purchasers. Whilst these particulars are prepared with all due care for the convenience of intending purchasers, the information is intended as a guide. The computer generated images and photographs do not necessarily represent the actual finishings/elevation or treatments, landscaping, furnishings and fittings at this development. Floor plans, dimensions and specifications are correct at the time of print. The illustrated location map is a general guide only. Please note that distances and timings referred to in this brochure are approximate and sourced from Google Maps. For information relating to weather in the area of this development, please refer to the Meteorological Office (www.metoffice.gov.uk). Nothing contained in this brochure shall constitute or form part of any contract. Information contained in this brochure is accurate at time of going to press on 14.11.19. CALA (North) Limited, registered in Scotland company number SC465071. Registered office: Johnstone House, 52-54 Rose Street, Aberdeen, AB10 1HA: Agent of CALA Management Limited.

