

# Vesta House

1 & 2 bedroom apartments

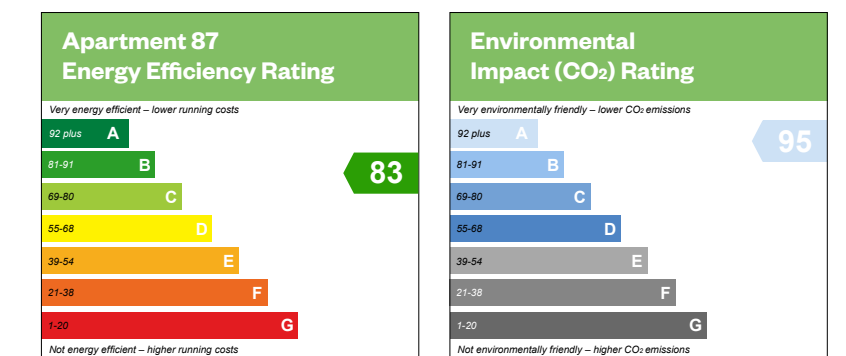
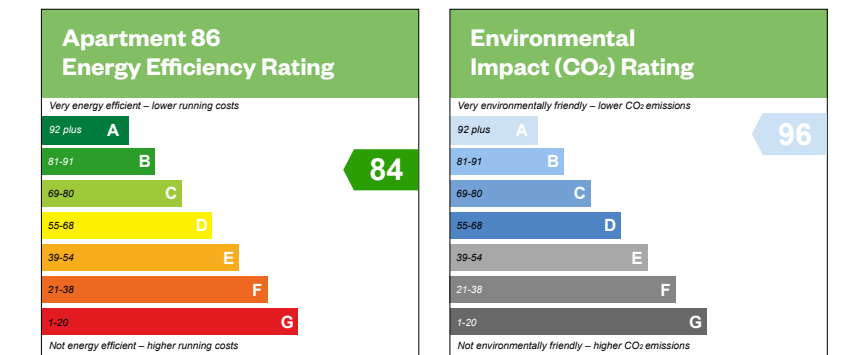
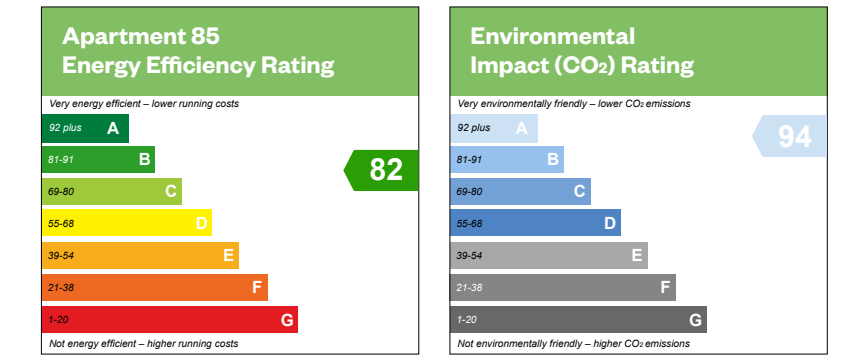
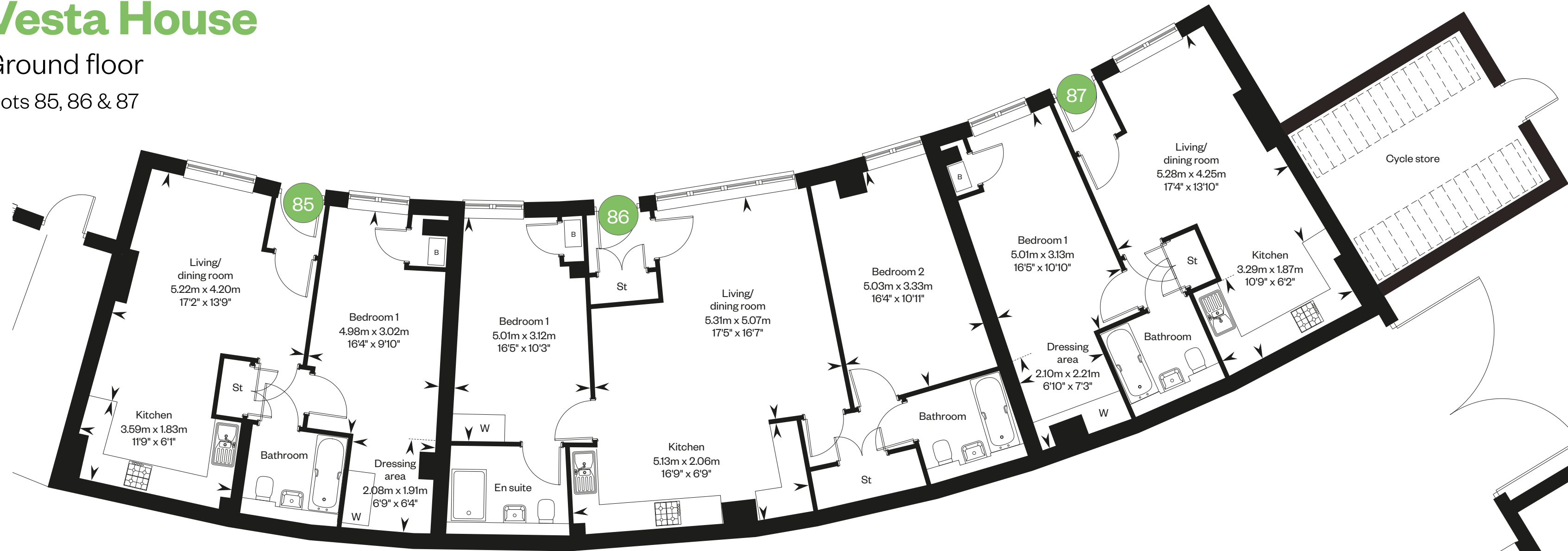


Computer generated image - Vesta House apartments

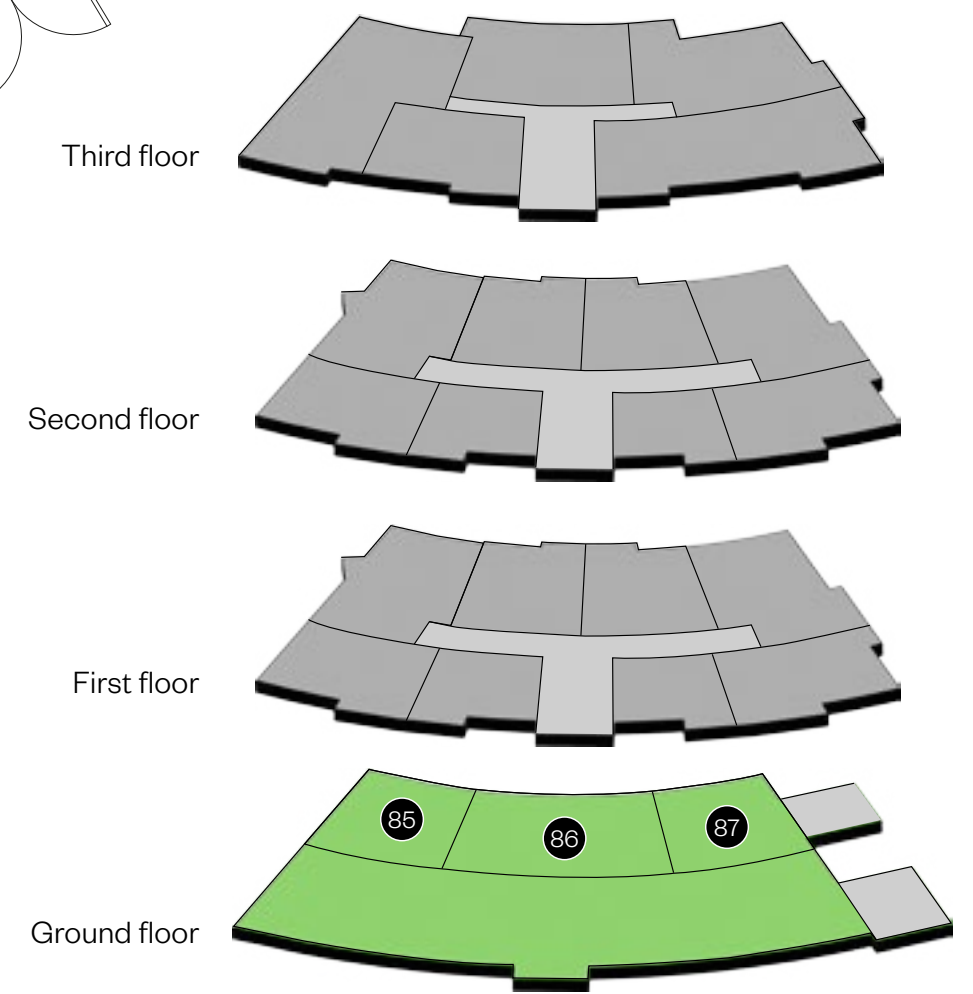
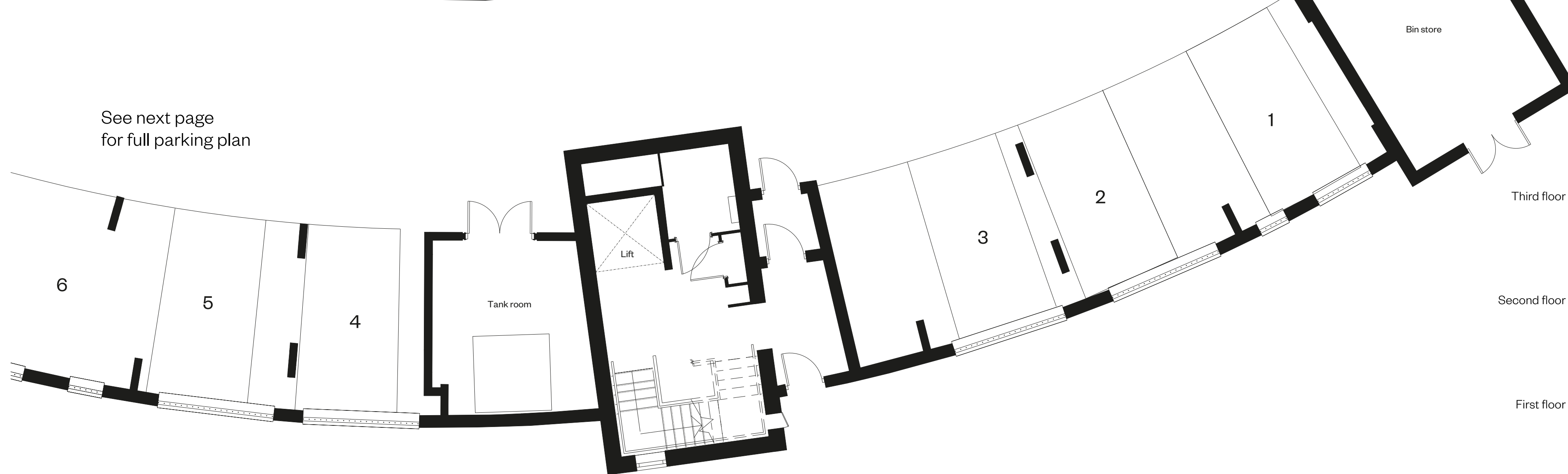
# Vesta House

Ground floor

Plots 85, 86 & 87



See next page  
for full parking plan



Please ask your Sales Consultant for further details. St: Store cupboard. B: Boiler.

This is a Predicted Energy Assessment for properties that are incomplete. Once the property is completed, this rating will be updated and an official Energy Performance Certificate will be created for the property.

# Vesta House

Ground floor

Parking plan

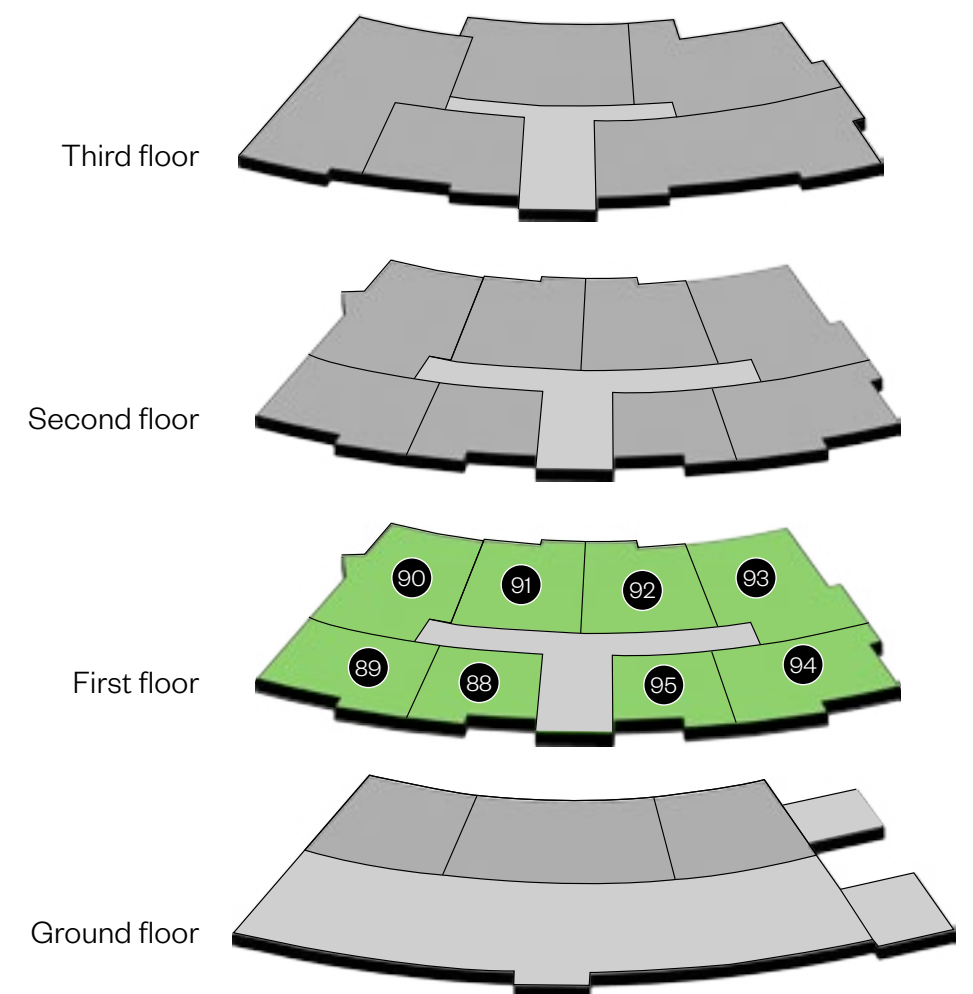
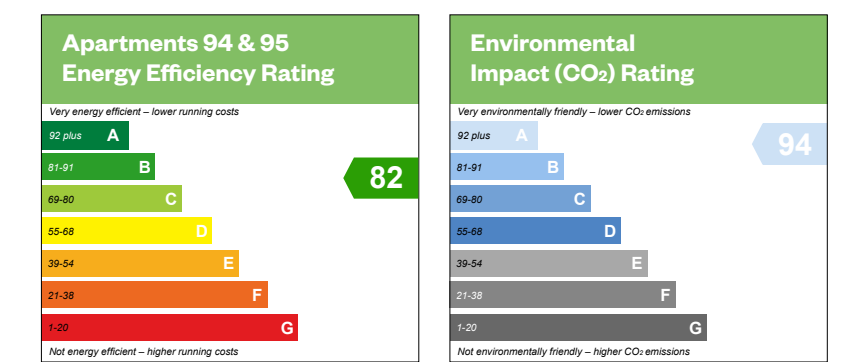
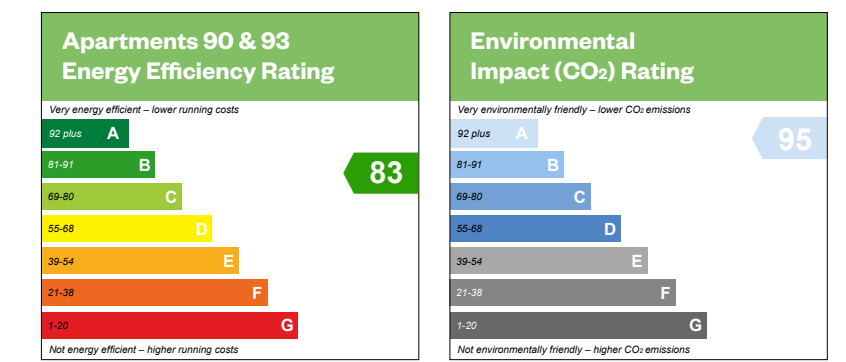
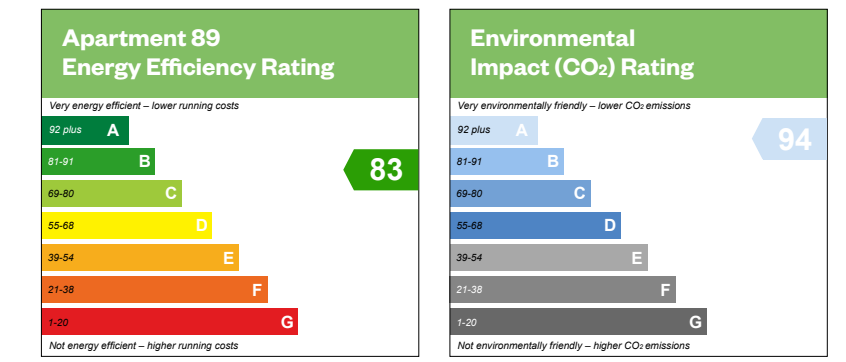
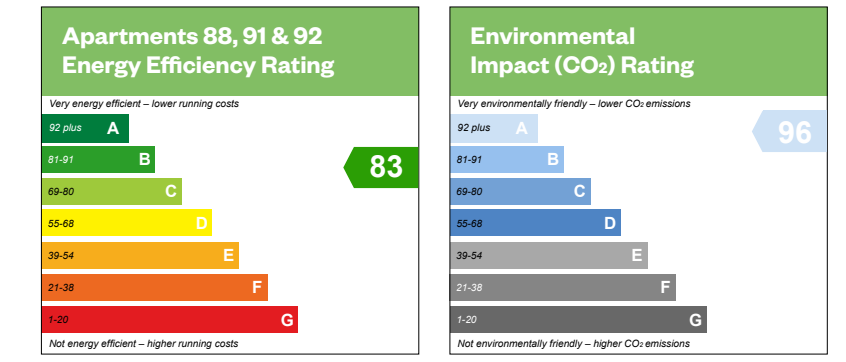


Please ask your Sales Consultant for further details.

# Vesta House

## First floor

Plots 88, 89, 90, 91, 92, 93, 94 & 95



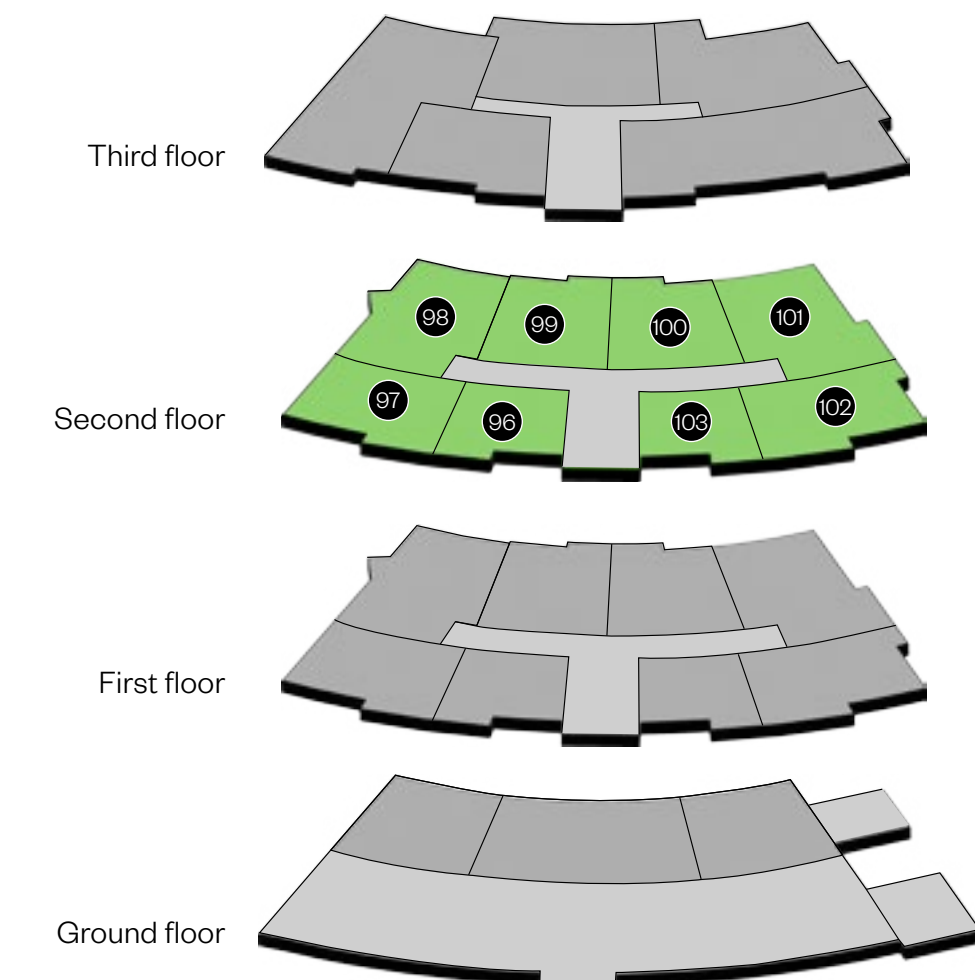
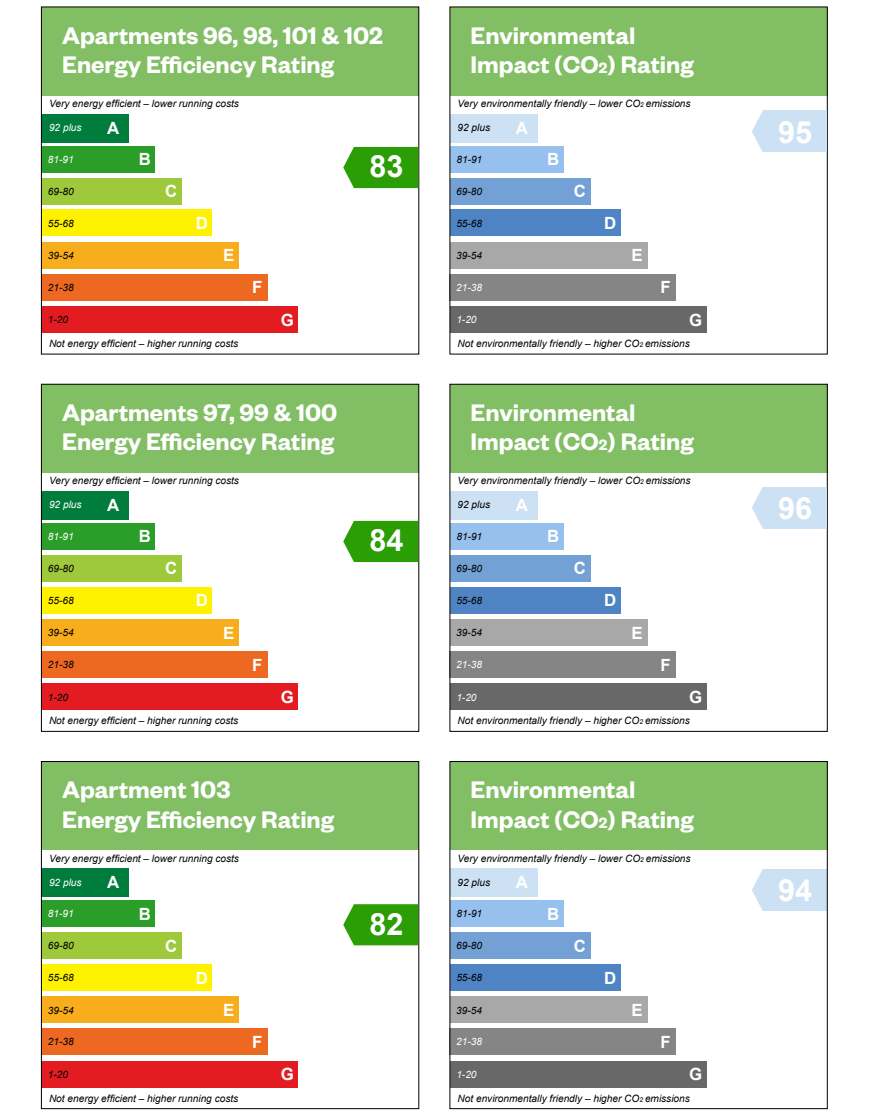
Please ask your Sales Consultant for further details. St: Store cupboard. B: Boiler.

This is a Predicted Energy Assessment for properties that are incomplete. Once the property is completed, this rating will be updated and an official Energy Performance Certificate will be created for the property.

# Vesta House

## Second floor

Plots 96, 97, 98, 99, 100, 101, 102 & 103



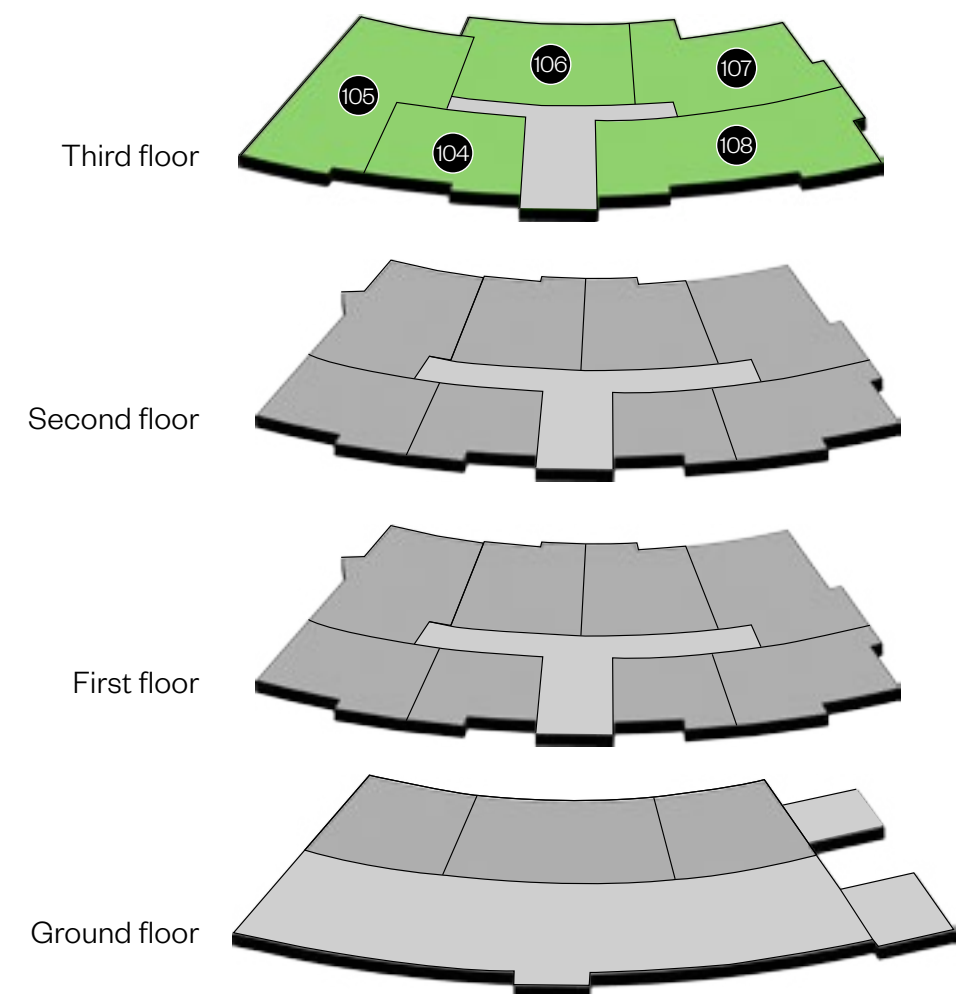
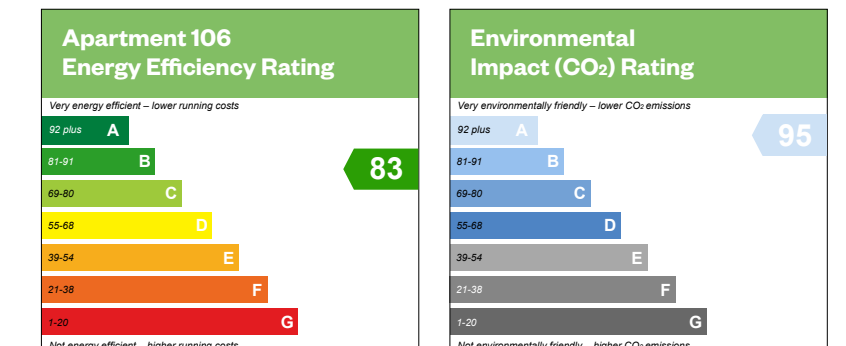
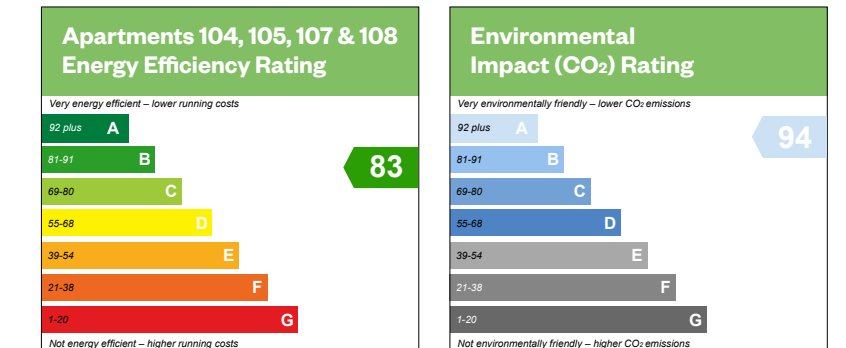
Please ask your Sales Consultant for further details. St: Store cupboard. B: Boiler.

This is a Predicted Energy Assessment for properties that are incomplete. Once the property is completed, this rating will be updated and an official Energy Performance Certificate will be created for the property.

# Vesta House

## Third floor

Plots 104, 105, 106, 107 & 108



Please ask your Sales Consultant for further details. St: Store cupboard. B: Boiler.

**IMPORTANT NOTICE TO CUSTOMERS:** The consumer protection from unfair trading regulations 2008. CALA Homes (South Home Counties) Limited operates a policy of continual product development and the specifications outlined in this brochure are indicative only. CALA reserves the right to implement minor changes to the sizes and specifications shown on any plans or drawings in this brochure without warning. Where alterations to the design, construction or materials to be used in the construction of the property would materially alter the internal floor space, appearance or market value of the property, we will ensure that these changes are communicated to potential purchasers. Whilst these particulars are prepared with all due care for the convenience of intending purchasers, the information is intended as a guide. Floor plans, dimensions and specifications are correct at the time of publication. This is a Predicted Energy Assessment for properties that are incomplete. Once the property is completed, this rating will be updated and an official Energy Performance Certificate will be created for the property.