



Vega Apartments

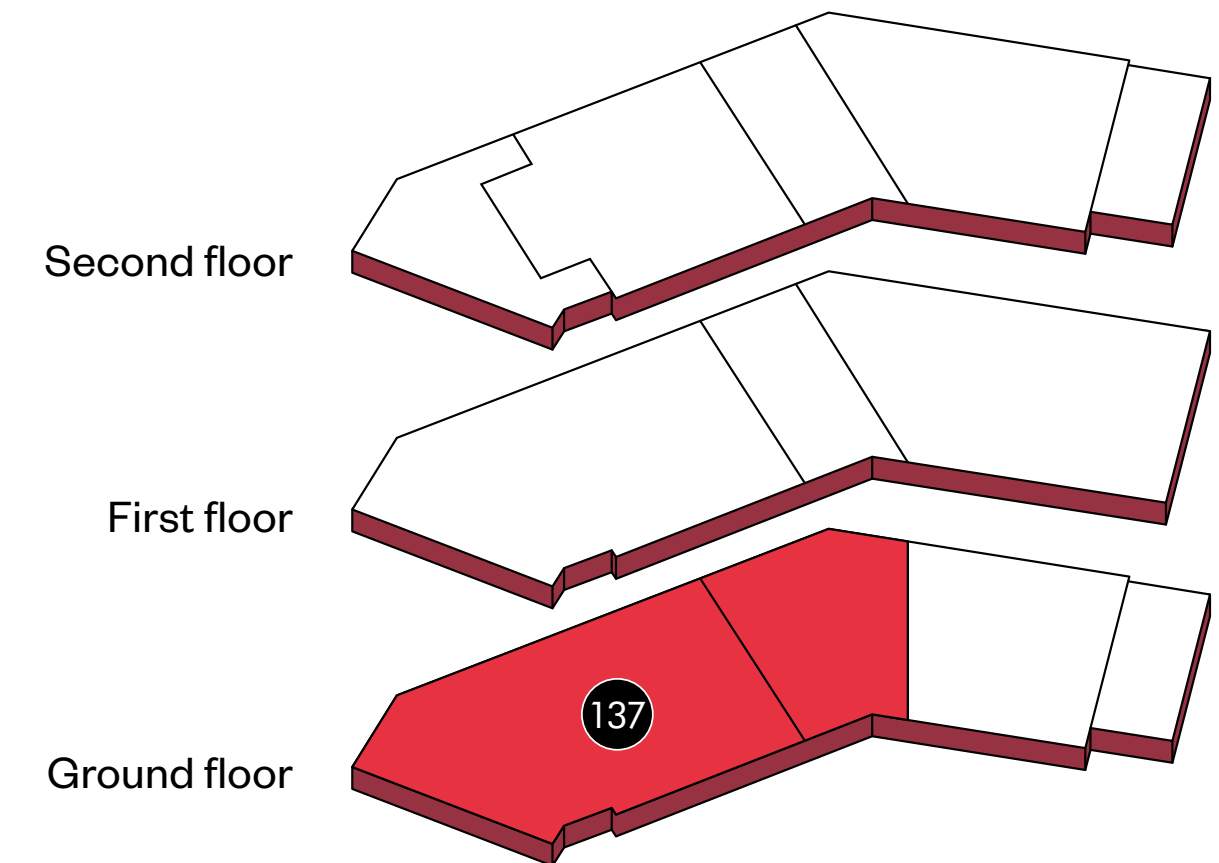
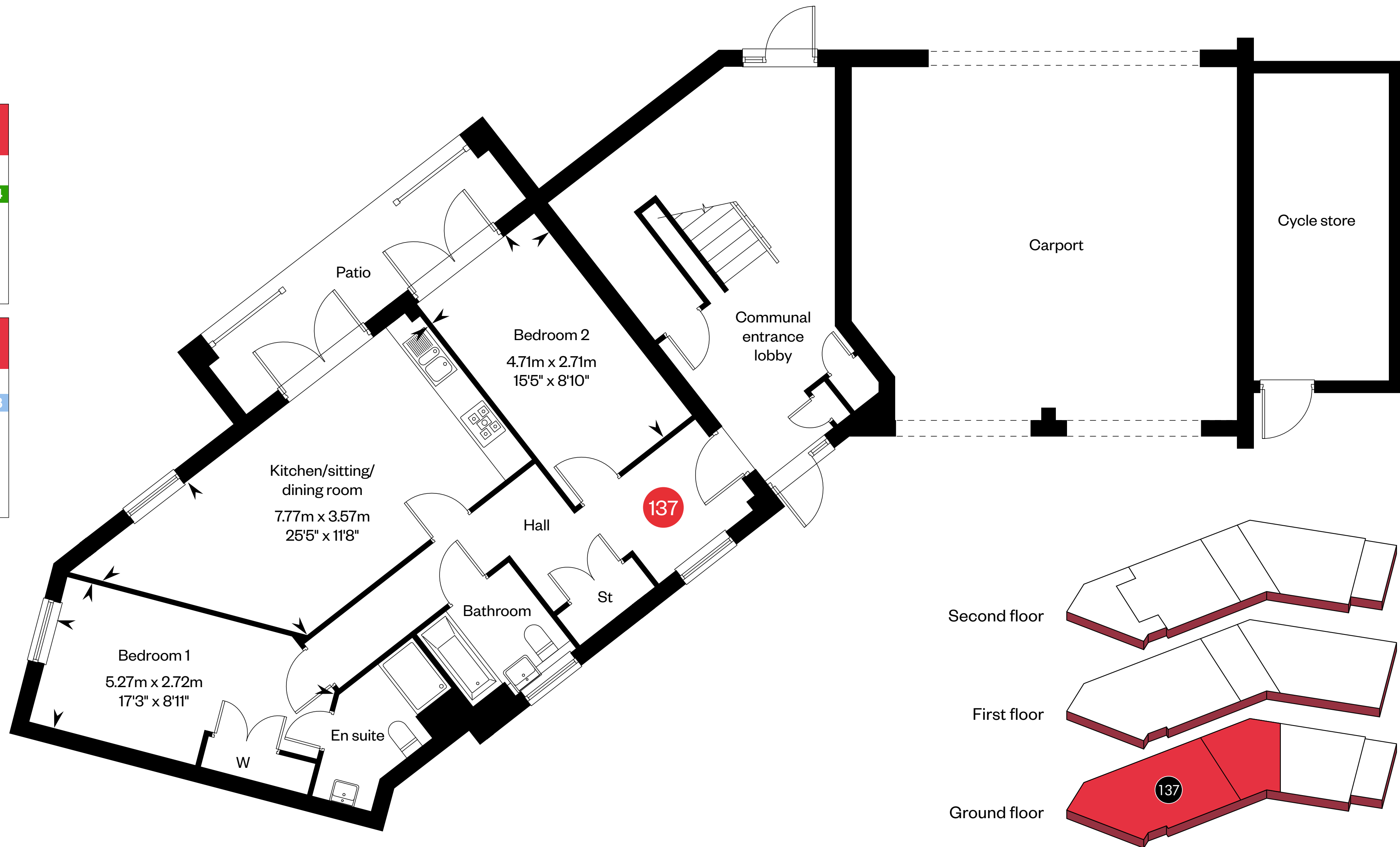
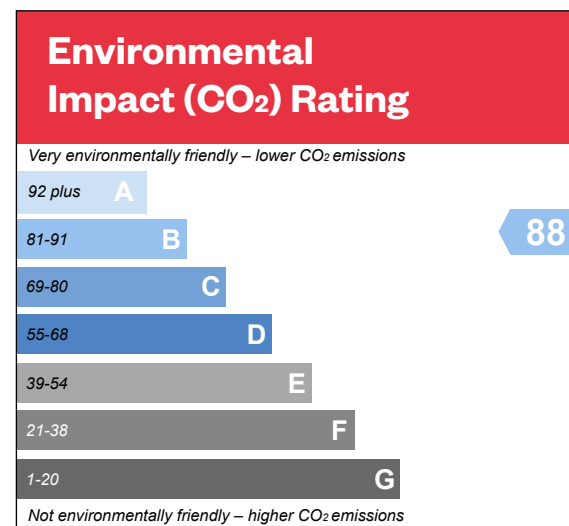
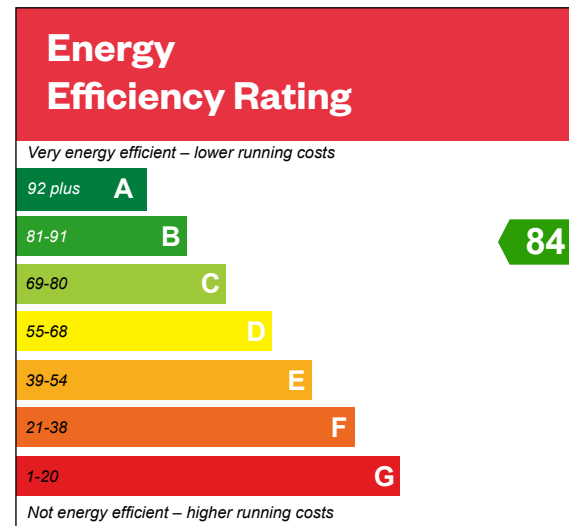
2 bedroom apartments with parking
1 bedroom apartment with parking



Vega Apartments

Ground floor

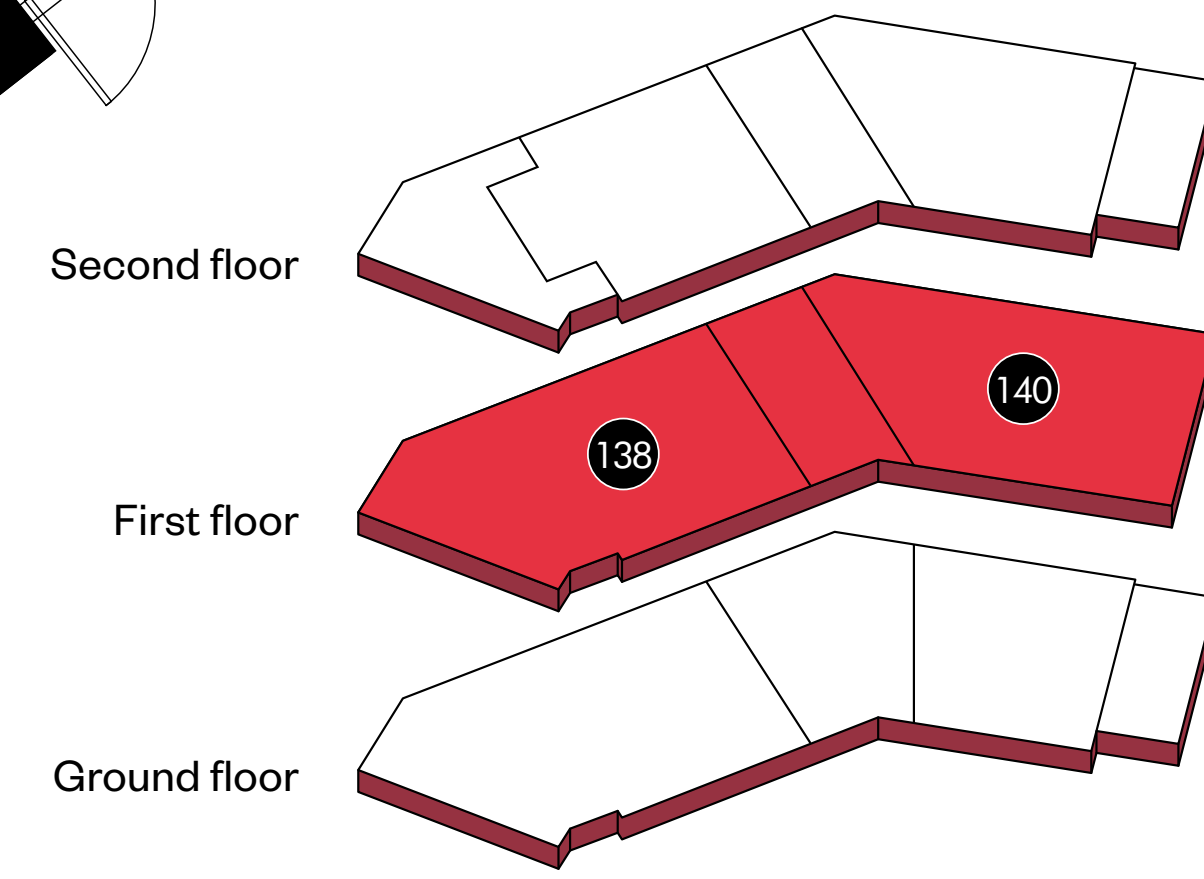
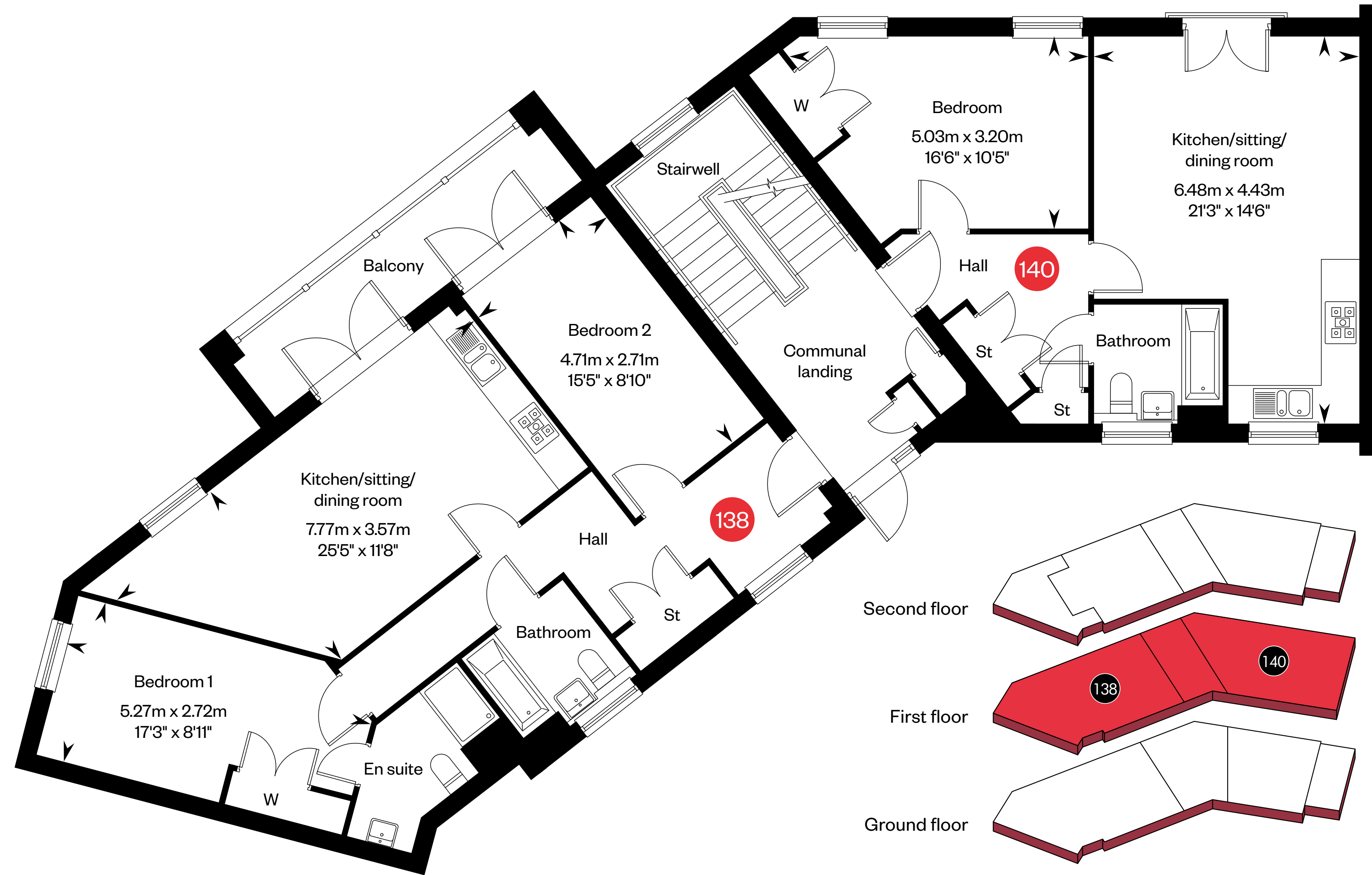
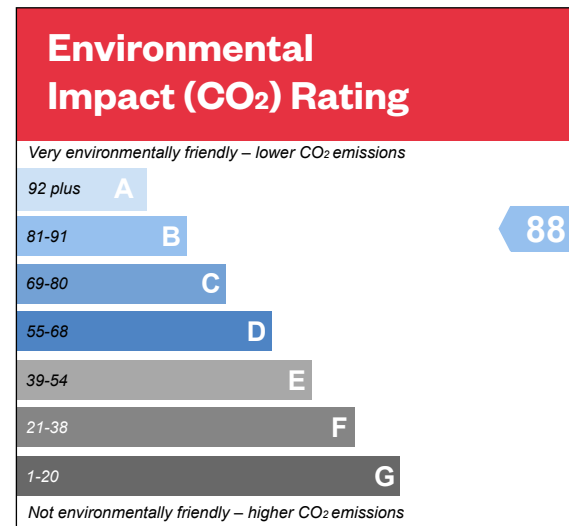
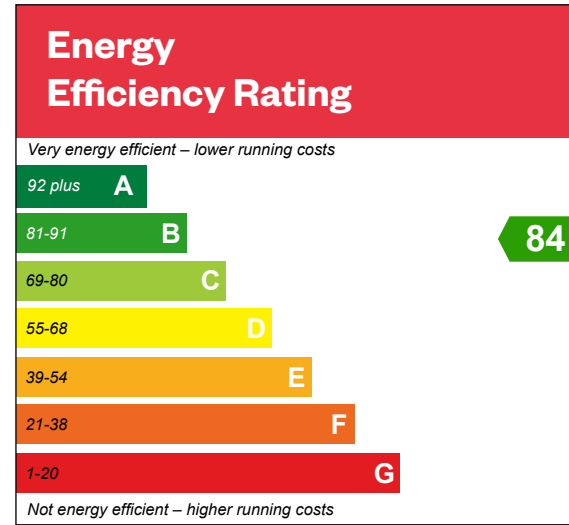
Plot 137



St: Storage cupboard. W: Wardrobe. Please ask your Sales Consultant for further details.

First floor

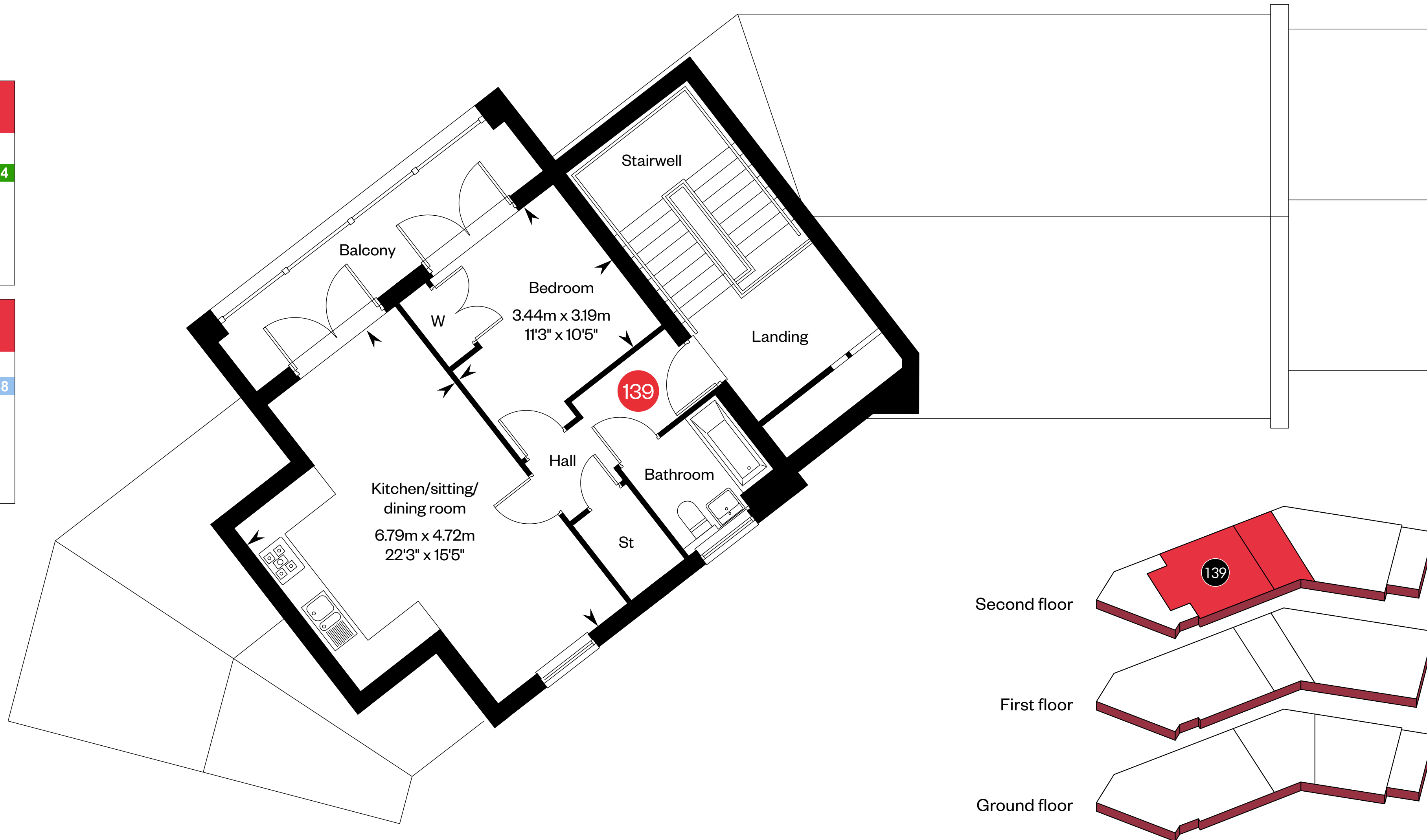
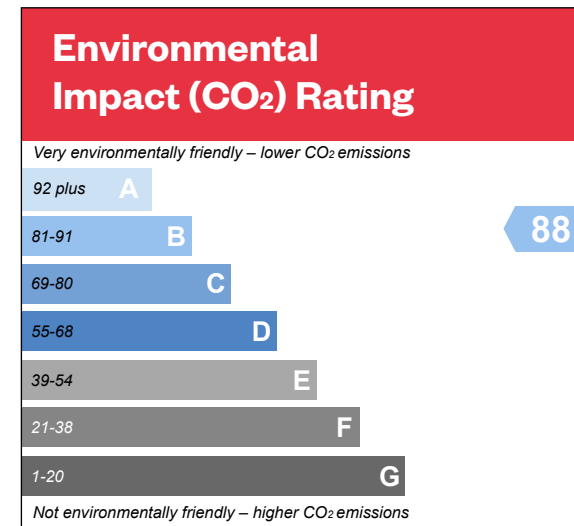
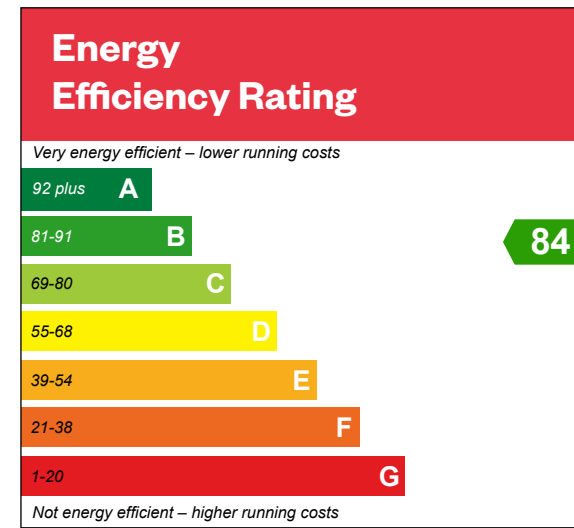
Plots 138 & 140



St: Storage cupboard. W: Wardrobe. Please ask your Sales Consultant for further details.

Second floor

Plot 139



St: Storage cupboard. W: Wardrobe. Please ask your Sales Consultant for further details.

IMPORTANT NOTICE TO CUSTOMERS: The Consumer Protection from Unfair Trading Regulations 2008. Cala Homes (North Home Counties) Limited operates a policy of continual product development and the specifications outlined in this brochure are indicative only. The computer generated images and photographs do not necessarily represent the actual finishings/ elevation or treatments, landscaping, furnishings and fittings at this development. Information contained is accurate at date of publication on 06.07.22. See the main brochure for the full Consumer Protection statement. This is a Predicted Energy Assessment for properties that are incomplete. Once the property is completed, this rating will be updated and an official Energy Performance Certificate will be created for the property.