

The Marron

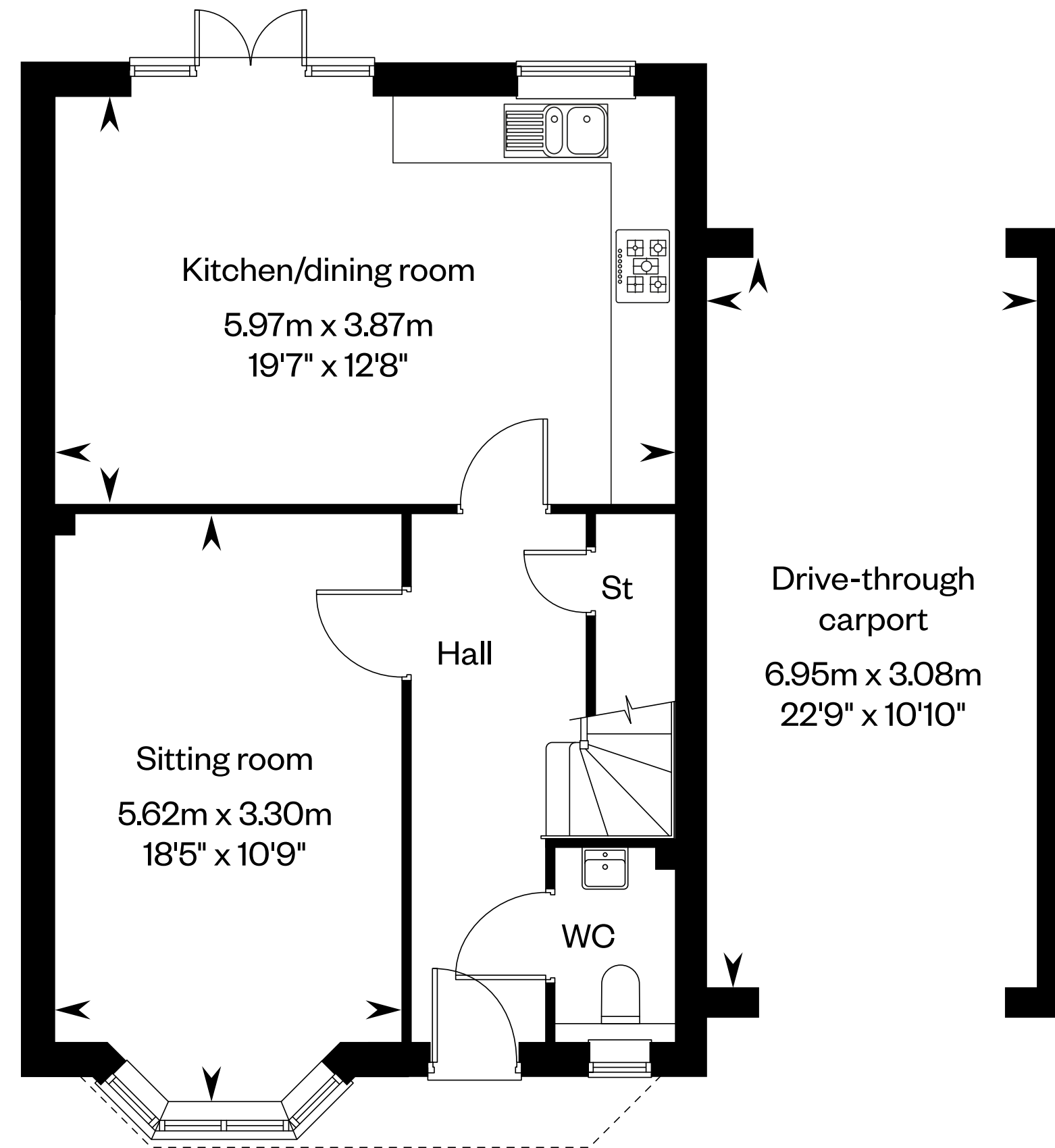
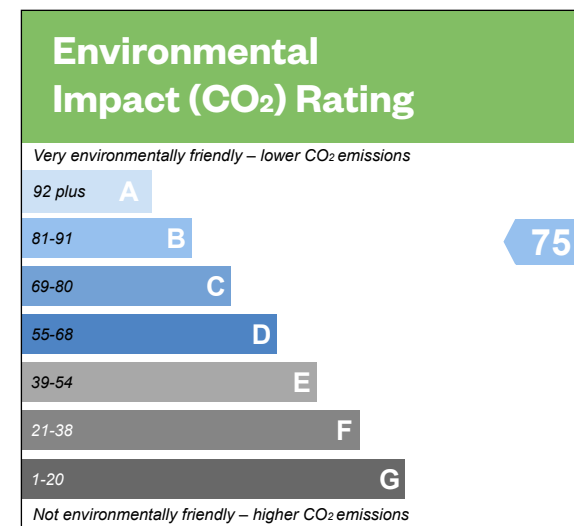
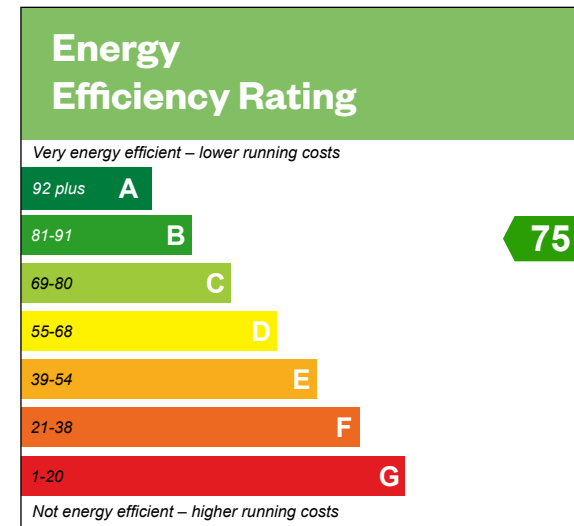
3 bedroom semi-detached house with study and drive-through carport



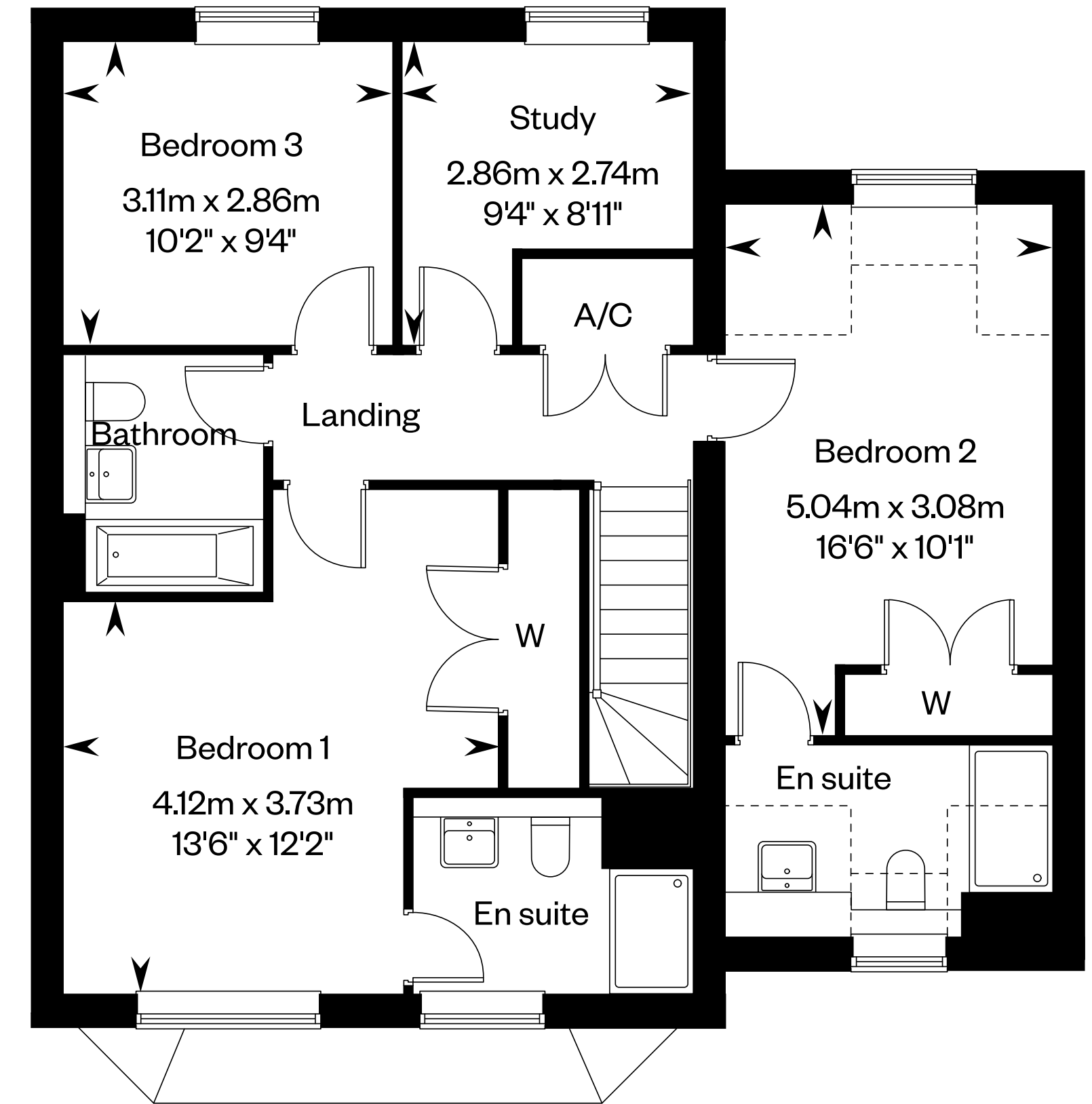
The Marron

Plots 143 & 149 – as shown

Plots 142 & 148 – handed



Ground floor



First floor

Dotted lines denotes reduced head height or structure above and approximate position of 1800mm ceiling height.
Please ask your Sales Consultant for further information. A/C: Airing cupboard. St: Storage cupboard. W: Wardrobe.

IMPORTANT NOTICE TO CUSTOMERS: The Consumer Protection from Unfair Trading Regulations 2008. Cala Homes (North Home Counties) Limited operates a policy of continual product development and the specifications outlined in this brochure are indicative only. The computer generated images and photographs do not necessarily represent the actual finishings/ elevation or treatments, landscaping, furnishings and fittings at this development. Information contained is accurate at date of publication on **XX**. See the main brochure for the full Consumer Protection statement. This is a Predicted Energy Assessment for properties that are incomplete. Once the property is completed, this rating will be updated and an official Energy Performance Certificate will be created for the property.