

# The Braid

3 bedroom plus study townhouse



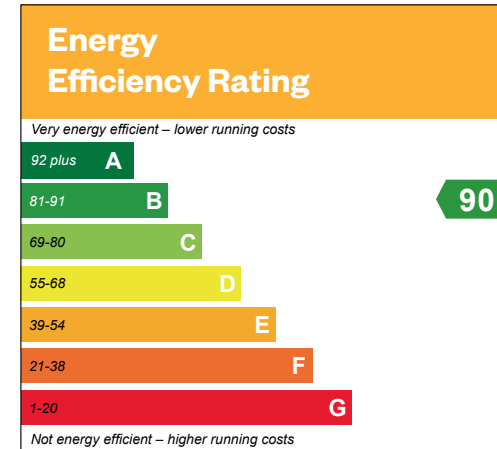


# The Braid

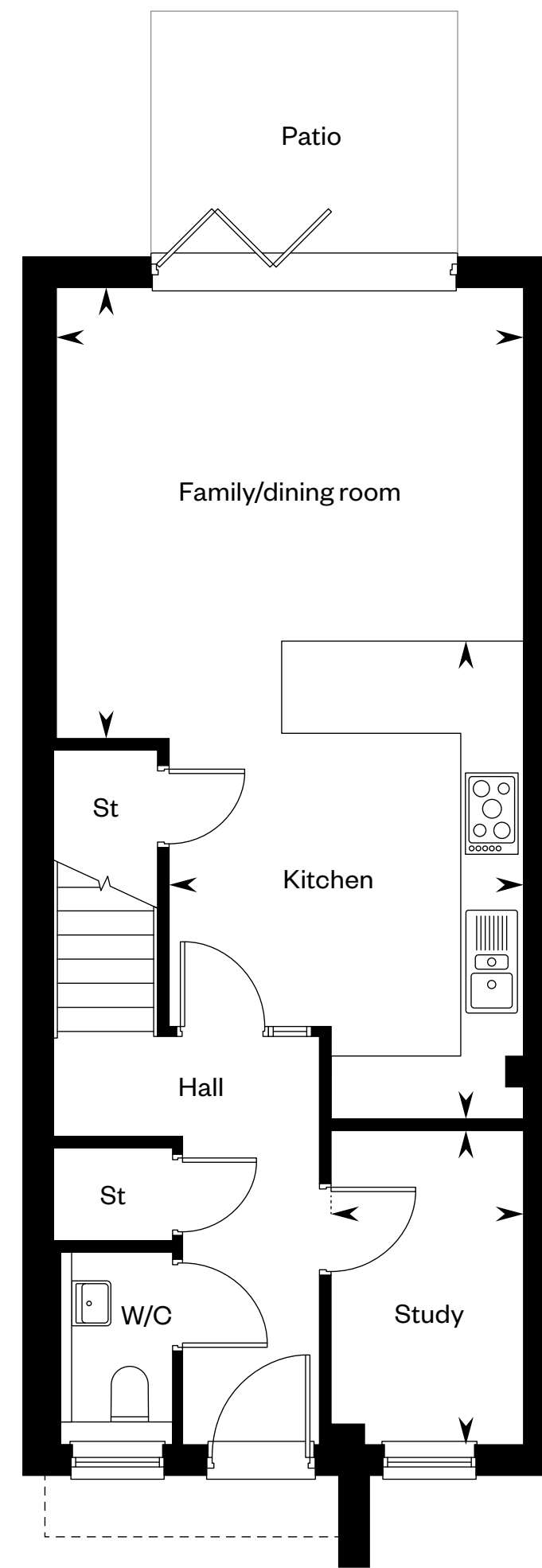
## 3 bedroom plus study townhouse

Plots 2, 3, 4, 5 & 6 – as shown

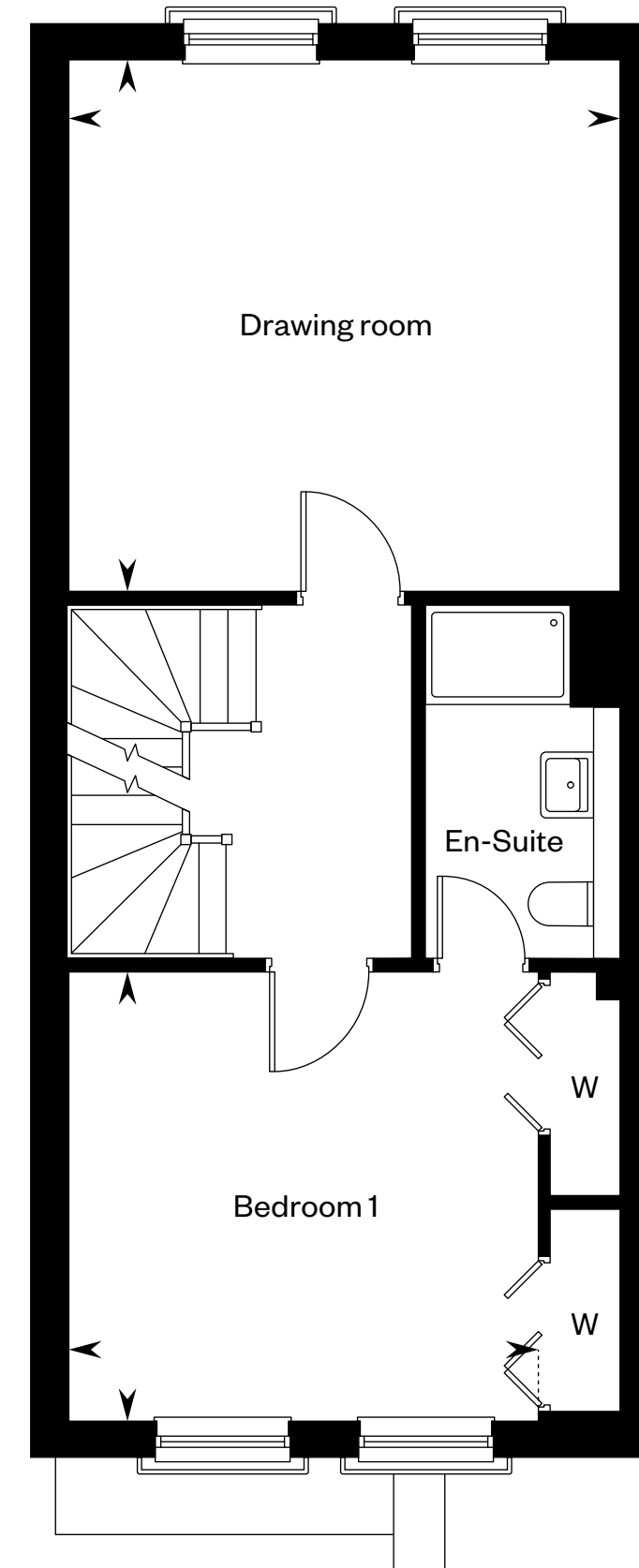
Plots 21, 22, 23, 24 & 25 – handed



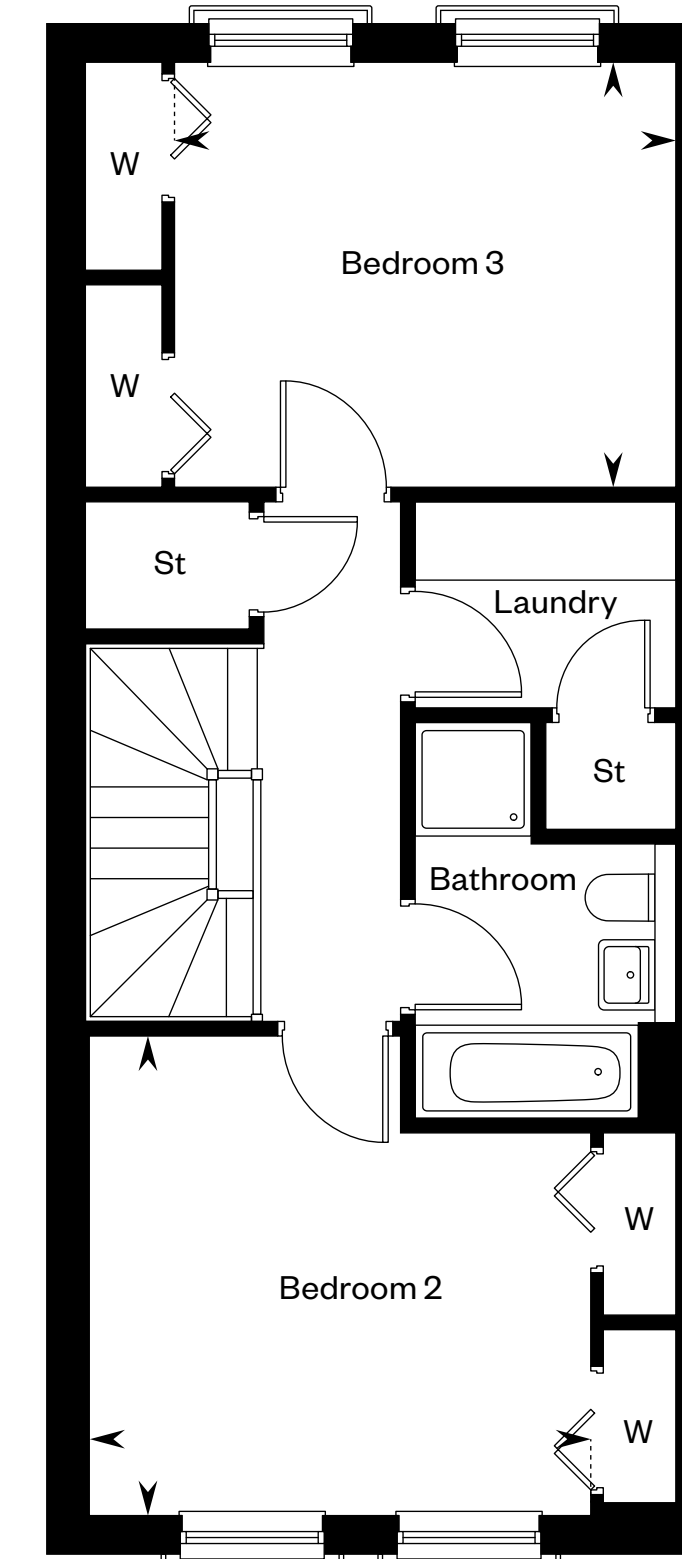
This is a Predicted Energy Assessment for properties that are incomplete. Once the property is completed, this rating will be updated and an official Energy Performance Certificate will be created for the property.



Ground floor



First floor



Second floor

### The Braid – Plots 2, 5, 22 & 25

Family/dining room	4.57m x 4.31m	15'0" x 14'2"
Kitchen	4.66m x 3.43m	15'4" x 11'3"
Study	3.04m x 1.88m	10'0" x 6'2"
Drawing room	4.56m x 4.39m	15'0" x 14'5"
Bedroom 1	3.88m x 3.71m	12'9" x 12'2"
Bedroom 2	3.88m x 3.71m	12'9" x 12'2"
Bedroom 3	3.88m x 3.28m	12'9" x 10'9"

### The Braid – Plots 3, 6, 21 & 24

Family/dining room	4.57m x 4.31m	15'2" x 14'5"
Kitchen	4.66m x 3.49m	15'4" x 11'6"
Study	3.04m x 1.88m	10'0" x 6'2"
Drawing room	4.62m x 4.39m	15'2" x 14'5"
Bedroom 1	3.98m x 3.71m	13'1" x 12'2"
Bedroom 2	3.98m x 3.71m	13'1" x 12'2"
Bedroom 3	3.94m x 3.28m	12'11" x 10'9"

### The Braid – Plots 4 & 23

Family/dining room	4.63m x 3.44m	15'3" x 14'2"
Kitchen	4.66m x 3.55m	15'4" x 11'8"
Study	3.04m x 1.98m	10'0" x 6'6"
Drawing room	4.66m x 4.39m	15'4" x 14'5"
Bedroom 1	3.94m x 3.71m	12'11" x 12'2"
Bedroom 2	3.94m x 3.71m	12'11" x 12'2"
Bedroom 3	3.98m x 3.28m	13'1" x 10'9"

Please ask your Sales Consultant for further details. ST: Store cupboard. W: Wardrobe.

IMPORTANT NOTICE TO CUSTOMERS: The Consumer Protection from Unfair Trading Regulations 2008. Cala Homes (East) Limited operates a policy of continual product development and the specifications outlined in this brochure are indicative only. The computer generated images and photographs do not necessarily represent the actual finishings/elevation or treatments, landscaping, furnishings and fittings at this development. Information contained is accurate at date of publication on 29.04.2024. See the main brochure for the full Consumer Protection statement.



# The Buckstone

3 bedroom plus study townhouse



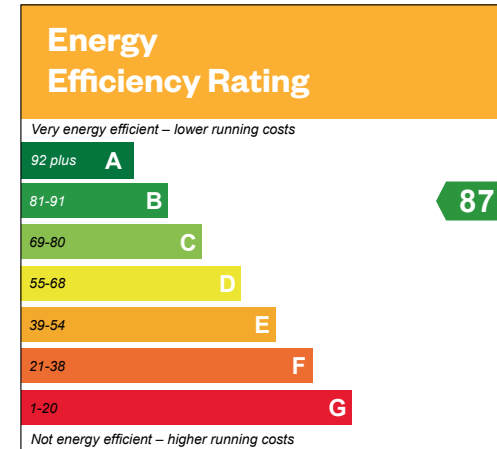


# The Buckstone

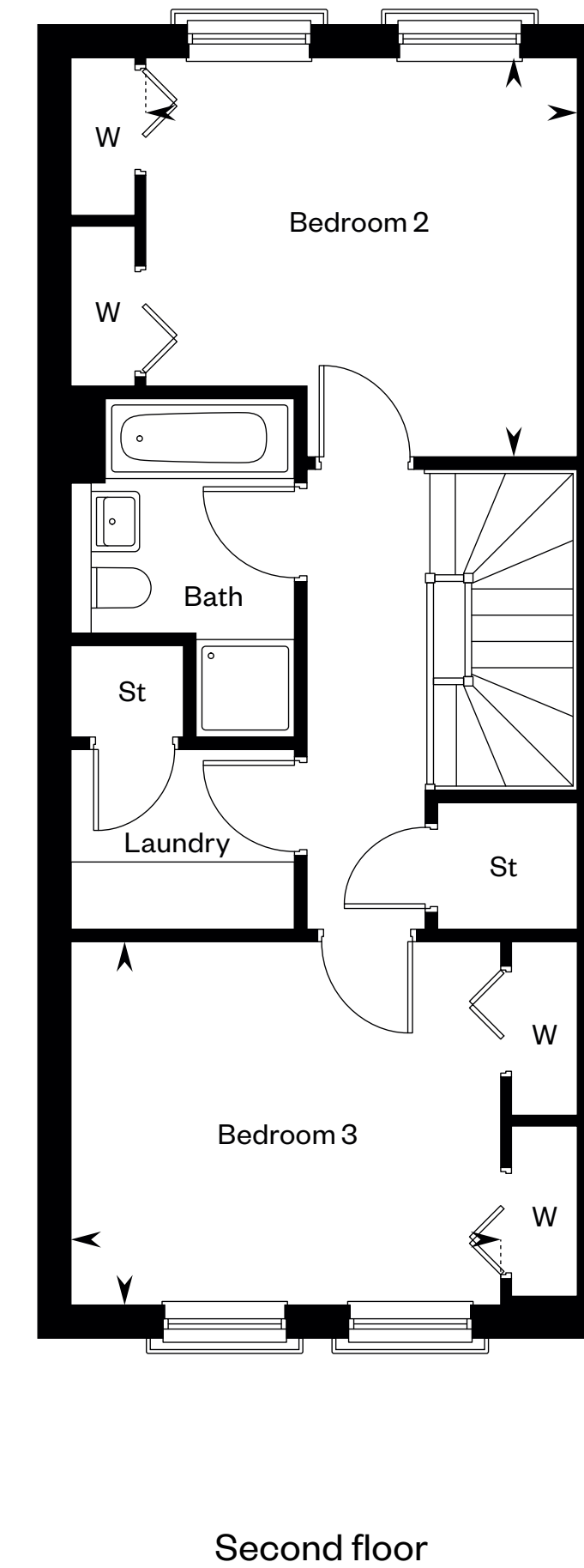
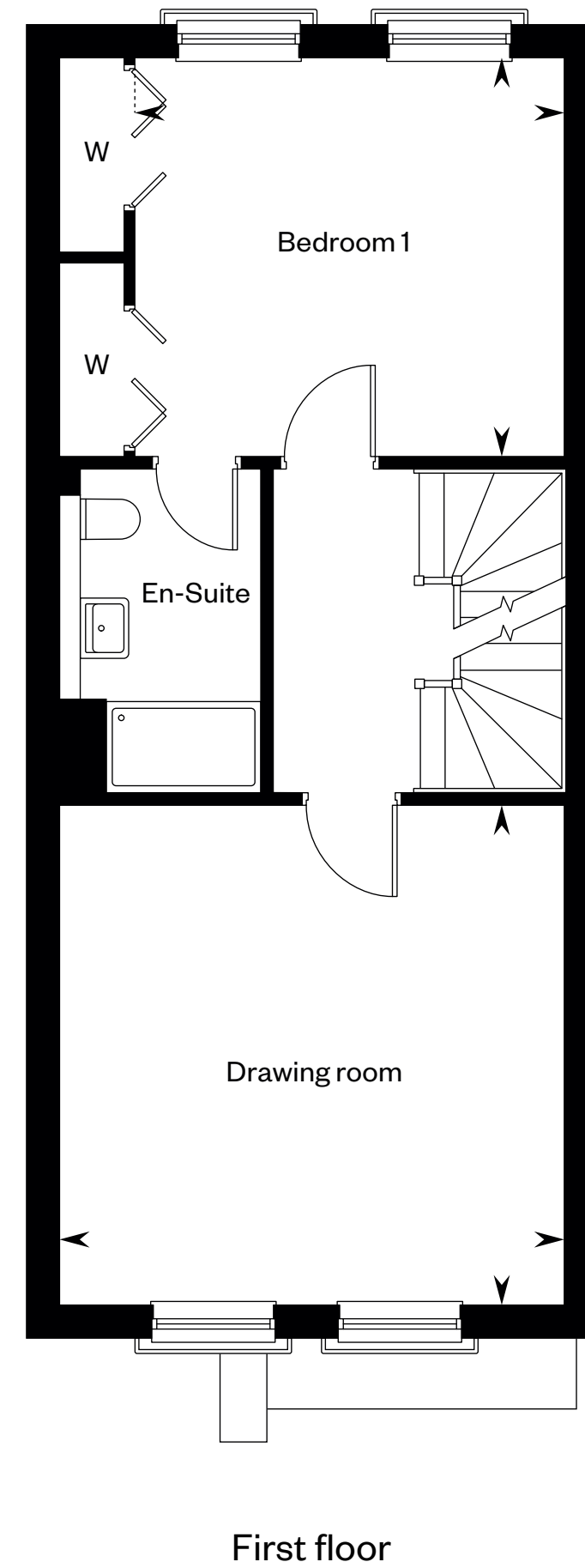
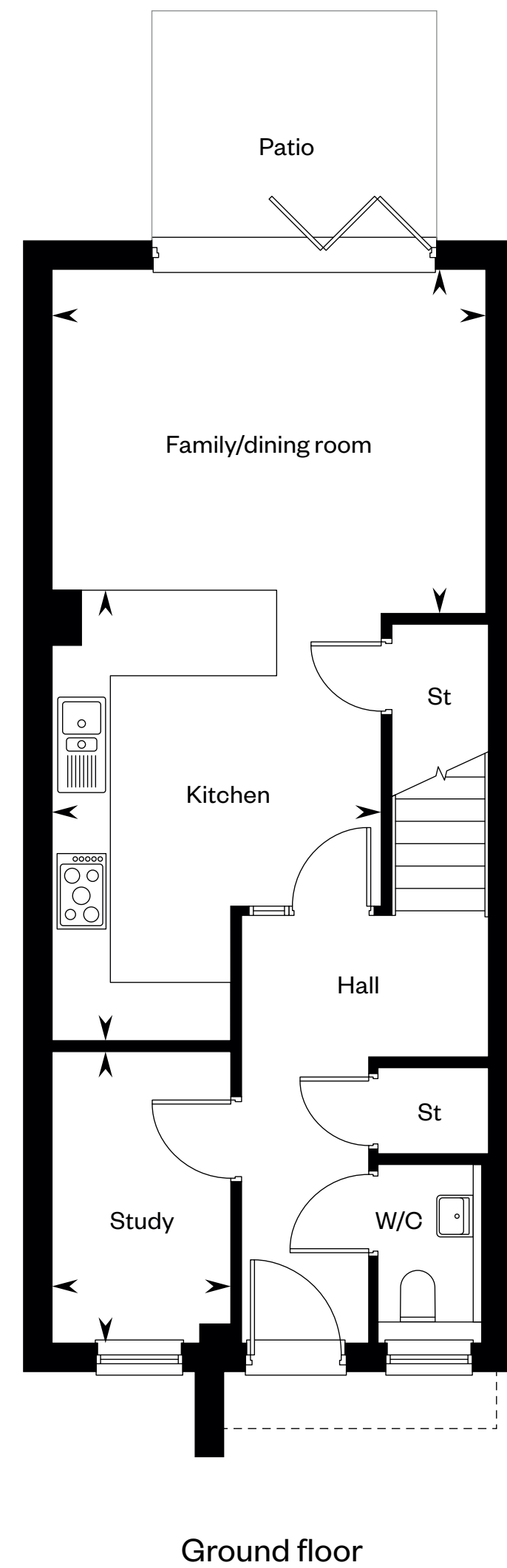
## 3 bedroom plus study townhouse

Plot 28, 29, 30, 32 & 33 – as shown

Plots 34, 35 & 36 – handed



This is a Predicted Energy Assessment for properties that are incomplete. Once the property is completed, this rating will be updated and an official Energy Performance Certificate will be created for the property.



### The Buckstone – Plots 28, 29, 32, 35 & 36

Family/dining room	4.53m x 3.54m	14'11" x 11'7"
Kitchen	4.74m x 3.43m	15'7" x 11'3"
Study	3.04m x 1.88m	10'0" x 6'2"
Drawing room	4.53m x 4.50m	14'11" x 14'9"
Bedroom 1	3.88m x 3.60m	12'9" x 11'10"
Bedroom 2	3.88m x 3.60m	12'9" x 11'10"
Bedroom 3	3.88m x 3.28m	12'9" x 10'9"

### The Buckstone – Plots 30, 33 & 34

Family/dining room	4.60m x 3.52m	15'1" x 11'7"
Kitchen	4.74m x 3.49m	15'7" x 11'6"
Study	3.04m x 1.88m	10'0" x 6'2"
Drawing room	4.60m x 4.50m	15'4" x 14'9"
Bedroom 1	3.98m x 3.60m	13'1" x 11'10"
Bedroom 2	3.98m x 3.60m	13'1" x 11'10"
Bedroom 3	3.94m x 3.28m	12'11" x 10'9"

### The Buckstone – Plot 31

Family/dining room	4.63m x 3.54m	15'3" x 11'7"
Kitchen	4.74m x 3.54m	15'7" x 11'8"
Study	3.04m x 1.98m	10'0" x 6'6"
Drawing room	4.63m x 4.50m	15'3" x 14'9"
Bedroom 1	3.94m x 3.60m	12'11" x 11'10"
Bedroom 2	3.94m x 3.60m	12'11" x 11'10"
Bedroom 3	3.98m x 3.28m	13'1" x 10'9"

Please ask your Sales Consultant for further details. ST: Store cupboard. W: Wardrobe.

IMPORTANT NOTICE TO CUSTOMERS: The Consumer Protection from Unfair Trading Regulations 2008. Cala Homes (East) Limited operates a policy of continual product development and the specifications outlined in this brochure are indicative only. The computer generated images and photographs do not necessarily represent the actual finishings/elevation or treatments, landscaping, furnishings and fittings at this development. Information contained is accurate at date of publication on 29.04.2024. See the main brochure for the full Consumer Protection statement.



# The Calton

3 bedroom plus study townhouse



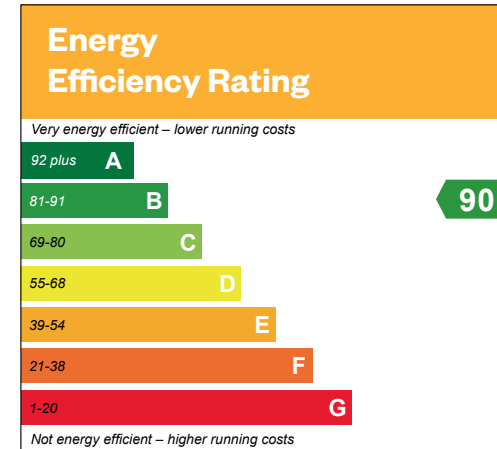


# The Calton

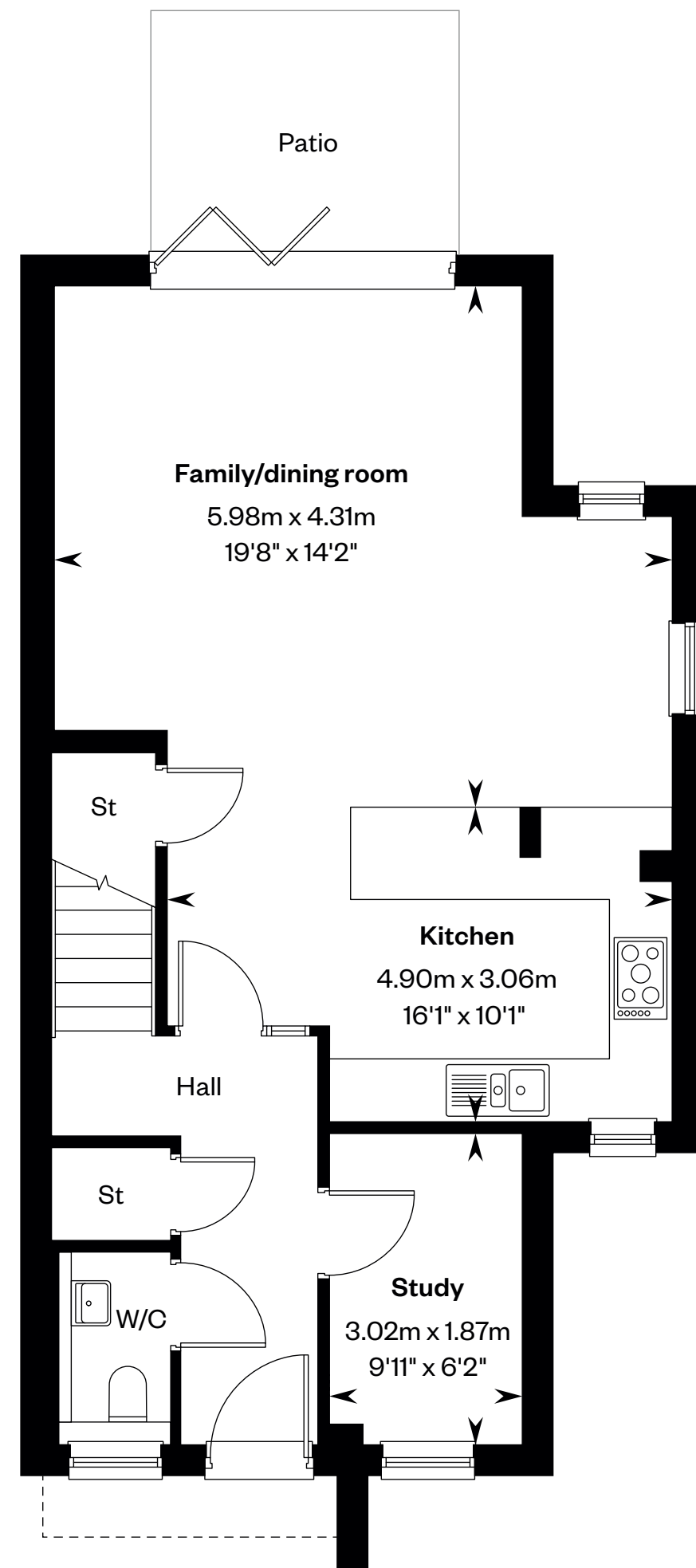
## 3 bedroom plus study townhouse

Plot 1 – as shown

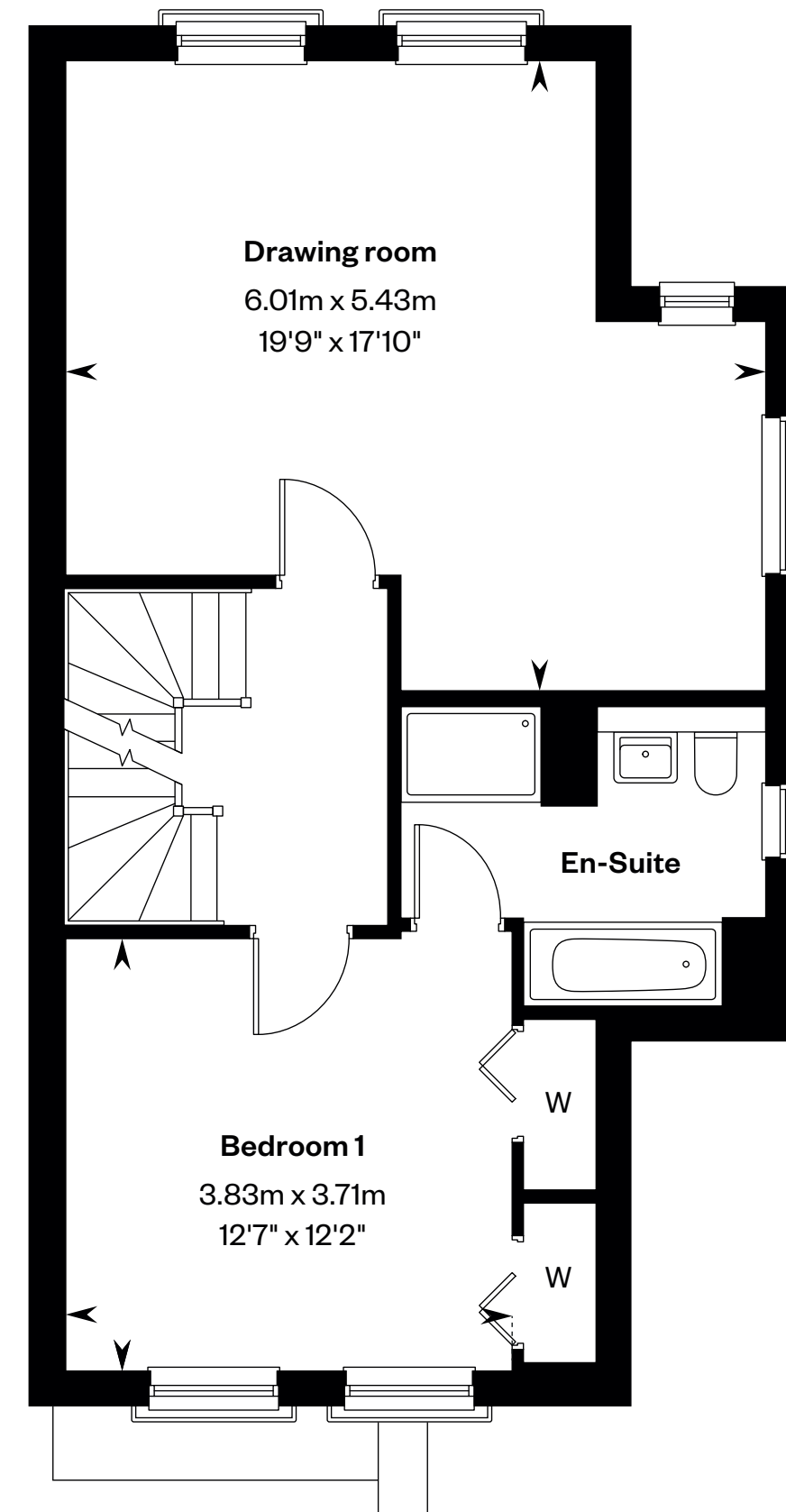
Plot 26 – handed



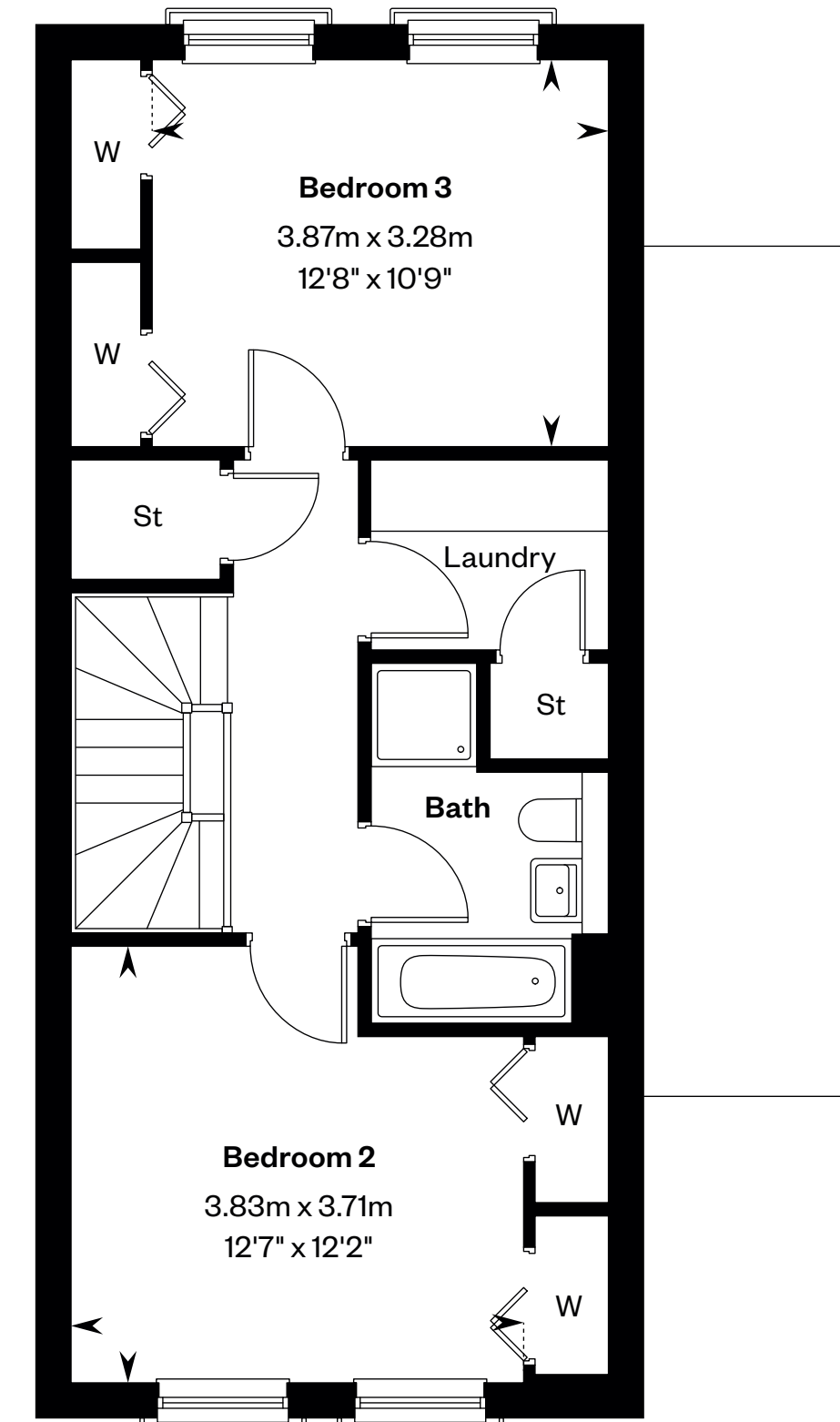
This is a Predicted Energy Assessment for properties that are incomplete. Once the property is completed, this rating will be updated and an official Energy Performance Certificate will be created for the property.



Ground floor



First floor



Second floor

Please ask your Sales Consultant for further details. ST: Store cupboard. W: Wardrobe.

IMPORTANT NOTICE TO CUSTOMERS: The Consumer Protection from Unfair Trading Regulations 2008. Cala Homes (East) Limited operates a policy of continual product development and the specifications outlined in this brochure are indicative only. The computer generated images and photographs do not necessarily represent the actual finishings/elevation or treatments, landscaping, furnishings and fittings at this development. Information contained is accurate at date of publication on 29.04.2024. See the main brochure for the full Consumer Protection statement.



# The Pentland

3 bedroom plus study townhouse



Computer Generated Image - Typical townhouses at St Crispin's Court

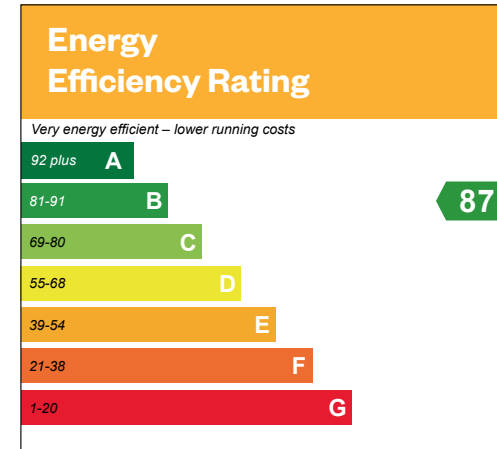


# The Pentland

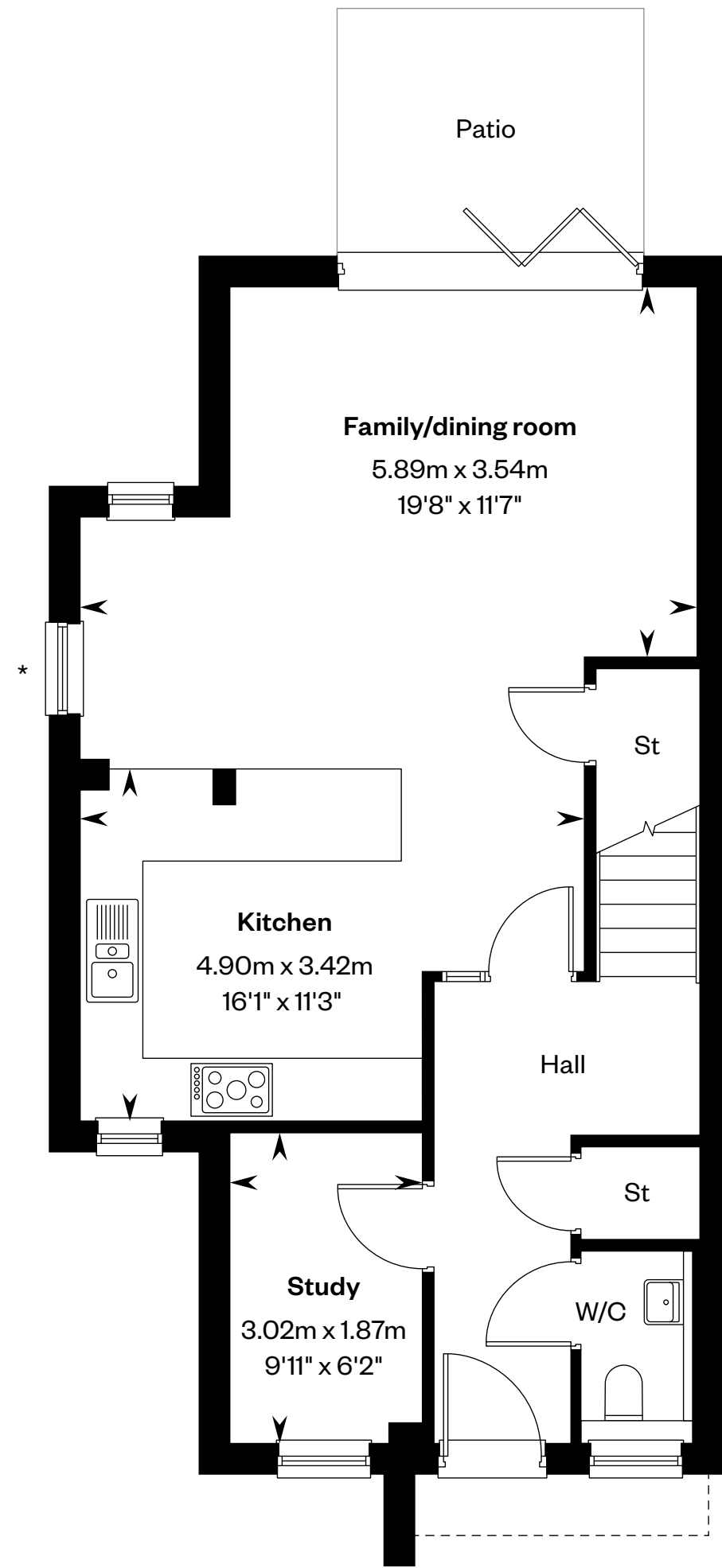
## 3 bedroom plus study townhouse

Plot 27 – as shown

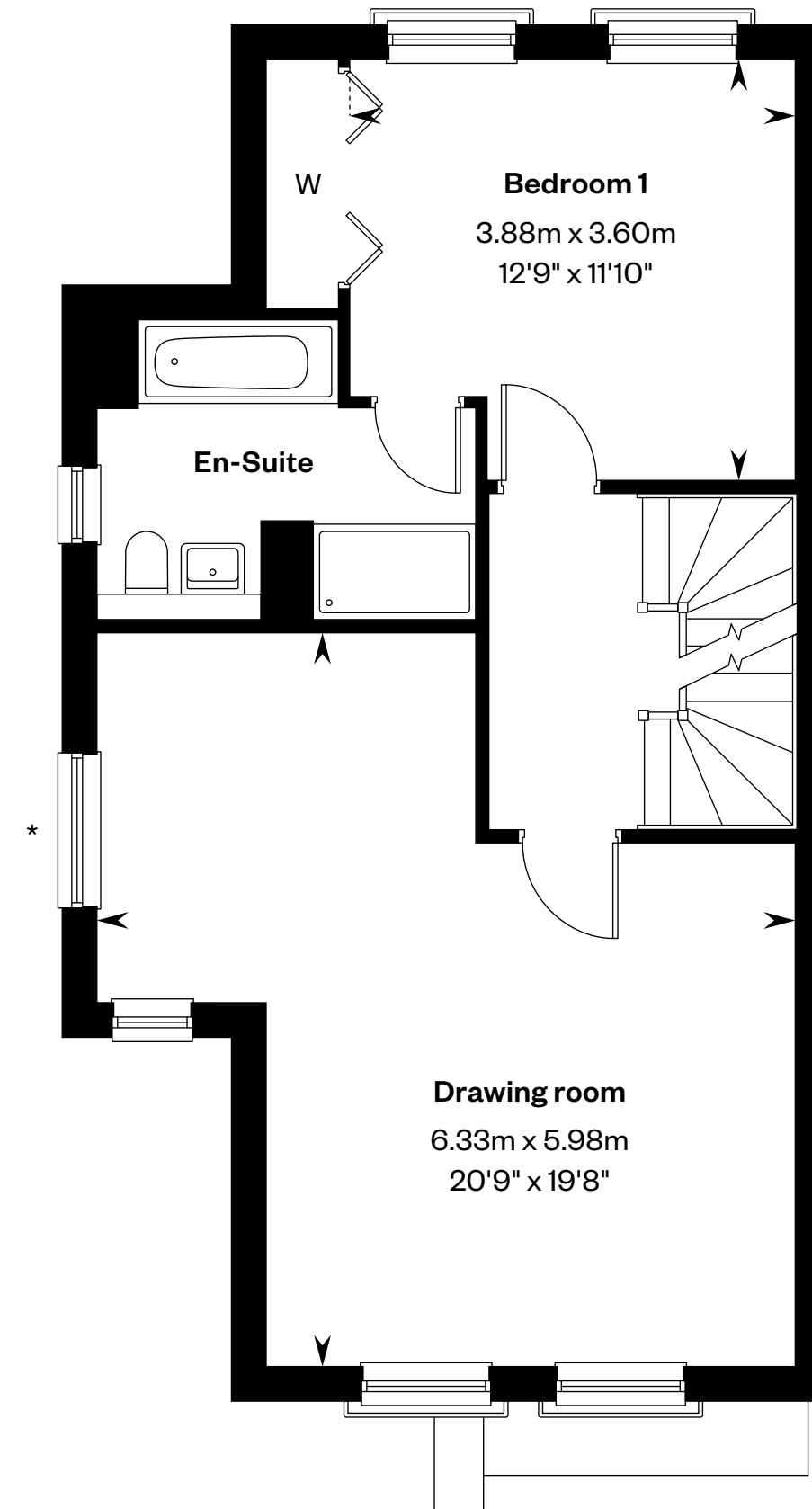
Plot 37 – handed



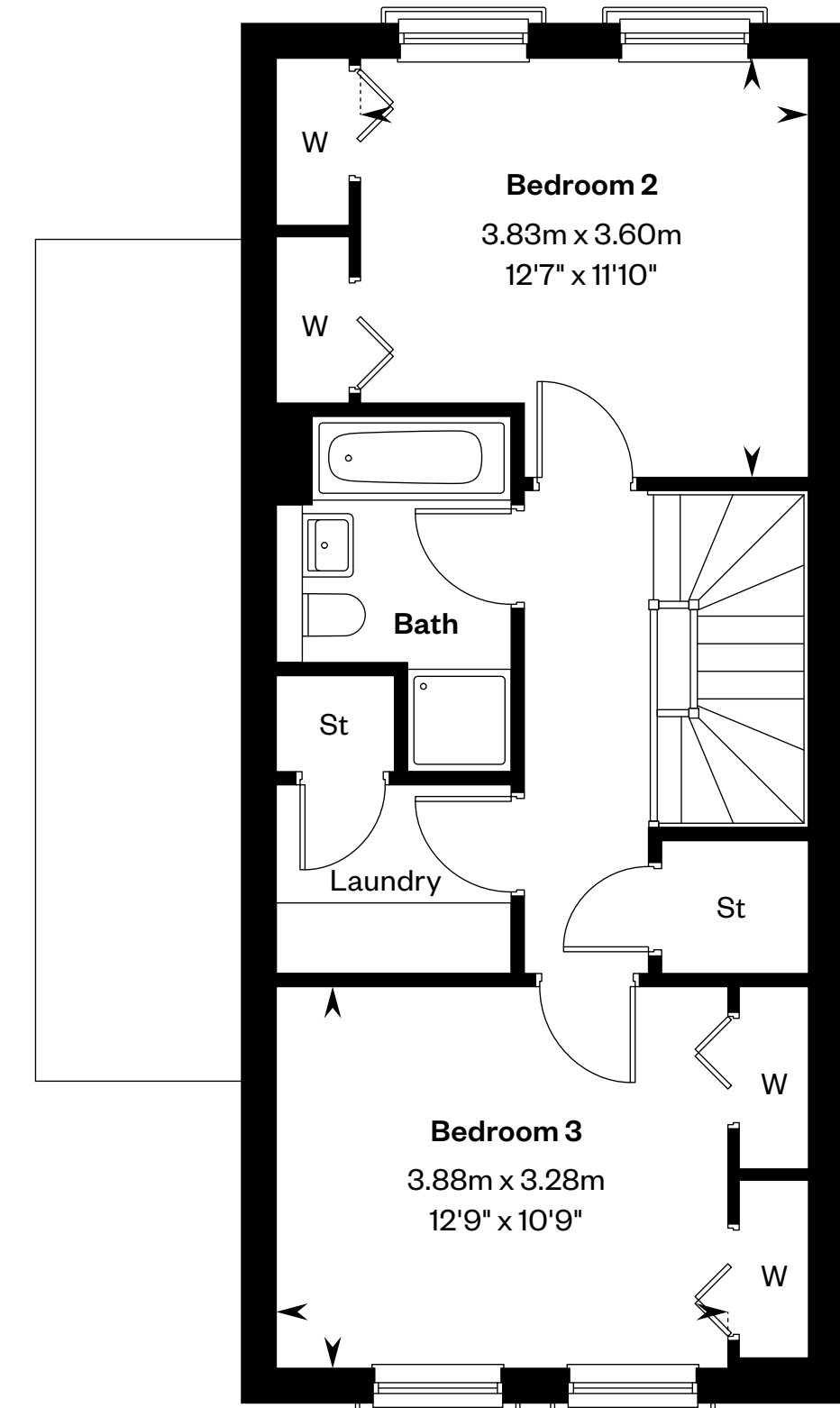
This is a Predicted Energy Assessment for properties that are incomplete. Once the property is completed, this rating will be updated and an official Energy Performance Certificate will be created for the property.



Ground floor



First floor



Second floor

\*Please note window shown is only to plot 27. Please ask your Sales Consultant for further details. ST: Store cupboard. W: Wardrobe.

IMPORTANT NOTICE TO CUSTOMERS: The Consumer Protection from Unfair Trading Regulations 2008. Cala Homes (East) Limited operates a policy of continual product development and the specifications outlined in this brochure are indicative only. The computer generated images and photographs do not necessarily represent the actual finishings/elevation or treatments, landscaping, furnishings and fittings at this development. Information contained is accurate at date of publication on 29.04.2024. See the main brochure for the full Consumer Protection statement.